

## FASHIONS.

## BATHING TOILETTES.

## 1. Bathing Dress for Little Boys.—

The whole dress, both tunic and pantaloons, is made of blue flannel, trimmed with woolen cord. The tunic is confined round the waist by a sash of red cashmere.

## 2. Striped Flannel Suit.—

This suit consists of a long blouse and pantaloons of red and white striped flannel. The blouse is trimmed with a broad stripe of white flannel, edged on either side with red; and a stripe of the same goes down the side of the leg and around the ankles. Around the neck is a small collar of the same, falling rather low in front. Shoulderstraps and cuffs of white flannel with a single red edge complete the trimming. The girdle is of white flannel. The cap, of oilskin or some other water-proof material, is made full behind, and fastens on the head with a band of puckered red flannel.

3. Red Flannel Suit.—This suit is of red flannel with *point-russe* work in black wool. Tunic and pantaloons form but one garment, gathered round the waist with an



1.

2.

3.

4.

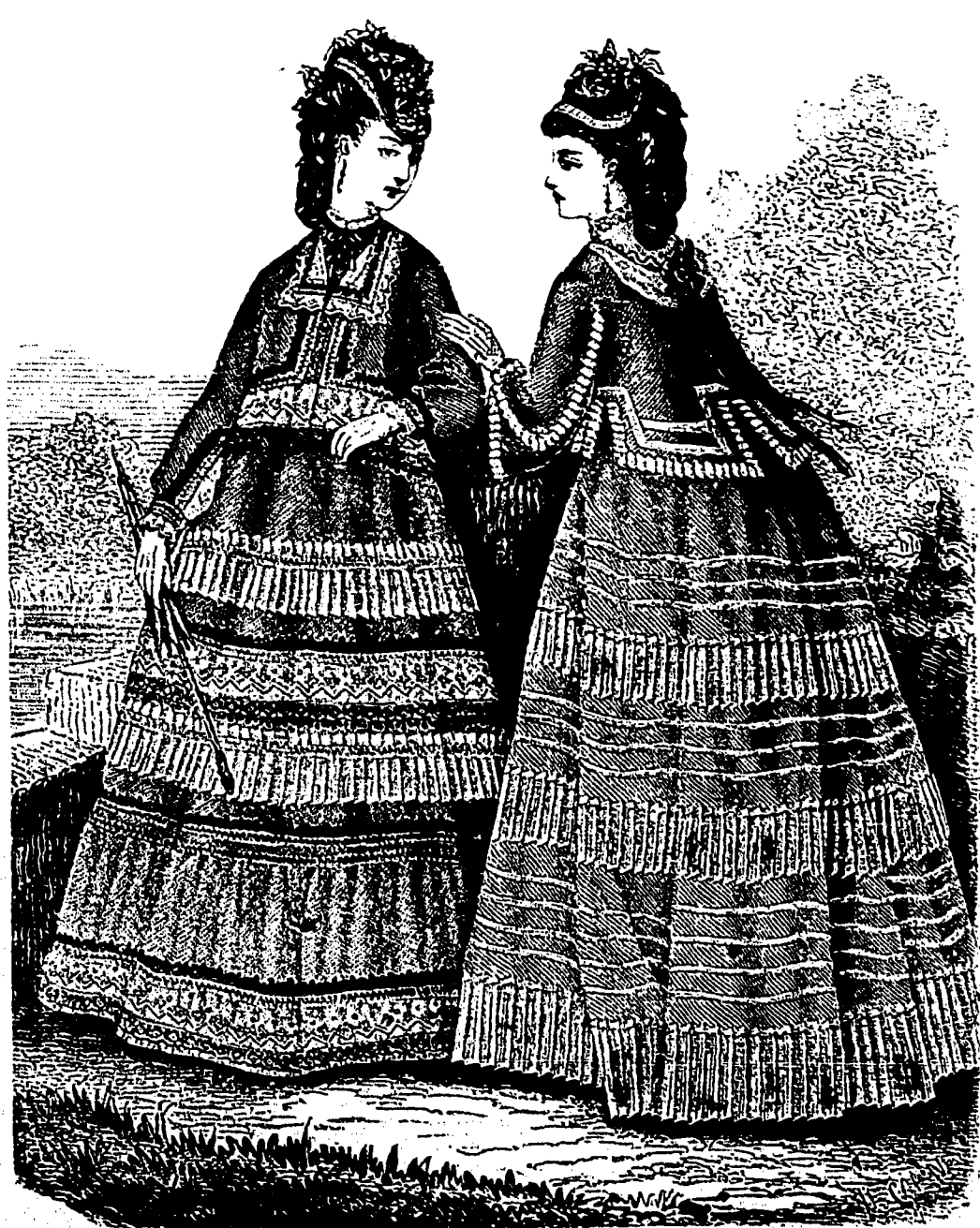
BATHING TOILETTES.

embroidered girdle. The pantaloons are sewn on to the tunic behind and button on to it in front. The sandals are made to correspond with the rest of the dress.

4. White Flannel Suit.—This suit is intended for those who do not swim. It consists of a single white flannel gown made after the fashion of a morning-gown with a full skirt and buttoning in front. The sleeves are wide and loose, and a broad collar encircles the neck, falling in two lap-pets in the front. Down the front, and around the skirt, collar and sleeves, it is trimmed with a key pattern worked in red wool. The girdle is of white flannel with two stripes of red.

## WALKING DRESSES.

1. This may be of any light summer material. There are four flounces on the skirt; the first of gauffered muslin with a narrow piece of insertion a short distance below the upper edge of the flounce. The second is of white lace of the same depth as the first, edged with black guipure edging. The third flounce is the same as the first. The fourth is very deep, of



1.

WALKING DRESSES.

2.



CHILD'S DRESS.

SACQUES AND PANIERS.