

MUNICIPAL ENGINEERS, CONTRACTORS AND MATERIALS

WILLIS CHIPMAN

Hon. Grad. McGill University.
M. Can. Soc. C.E. M. Am. Soc. C.E.
Mem. Am. W.W. Ass'n.
WATERWORKS, SEWERAGE WORKS, GAS
WORKS, ELECTRIC LIGHT AND
POWER PLANTS
Reports, Surveys, Construction, Valuations
103 BAY STREET - TORONTO

RODERICK J. PARKE

A. M. American Institute E. E.
CONSULTING ENGINEER
Design and Superintendence of—Electric Railroads,
Steam and Hydraulic Plants, Long Distance Power
Transmissions, Municipal Electric Lighting Systems,
Welding and Electrolytic Processes.
Estimates Valuations Tests
Reports for Financial Institutions
409-410 Temple Building, TORONTO, CANADA
Long Distance Telephone 8047.

W. T. ASHBRIDGE, C.E.

A. M. CAN. Soc. C.E.
609 Temple Building, - TORONTO
Special Attention given to
MUNICIPAL IMPROVEMENTS
Sewerage Works, Water Supply,
Pavements, Concrete Construction, Etc.

R. E. SPEAKMAN, C.E.

A. M. Inst. C. E., 1876.
CONSULTING ENGINEER
(LATE GALT & SPEAKMAN.)

Waterworks, Sewerage and Sewage Disposal.
Municipal Improvements.
Granolithic Pavements.
Electric Light Plants.
Drainage and Irrigation of Land.
Coal Handling Plant and Machinery.
Plans, Specifications and Estimates.
Construction and Valuations.

Canada Life Building - TORONTO

Notice to Contractors

WE can save you money on.....
Granolithic or Crushed Stone
of any size, as we have the most complete plant in
Canada. You will consult your own interests by getting
our prices. We also make a specialty of Slate, Tile,
Granite and all kinds of Stone. Crusher at Jarvis
street wharf.
THE POWELL GRANITE & MARBLE CO'Y,
Phone 3440. Office, 483-484 Yonge St., Toronto

THE PHOENIX BRIDGE & IRON WORKS

MANUFACTURERS OF STAY BOLTS AND ALL KINDS OF RIVETS
STEEL AND IRON STRUCTURAL AND ARCHITECTURAL WORK
Beams, Channels, Angles and
Tees always in stock.
29 to 49 McGill Street,
P.O. Box 893. MONTREAL
Prices on Application.

**Dominion
Bridge
Co., Ltd.**

P. O. Address, MONTREAL, P. Q.
Works at LACHINE LOCKS, P. Q.

STEEL BRIDGES

For Railways and Highways
Piers, Trestles, Water Towers
Tanks, Buildings, Roofs, Girders,
Beams and Columns
Toronto Agent: GEO. E. EVANS,
38 Canada Life Bldg., TORONTO, ONT

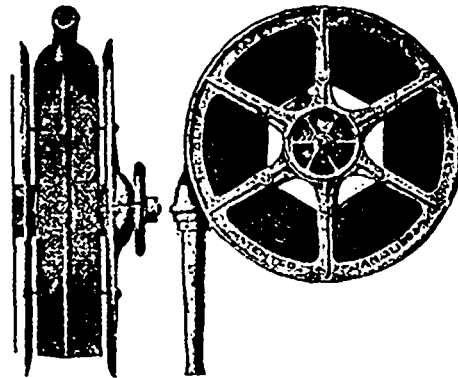
THE CANADIAN PORTLAND CEMENT CO., LIMITED

Works: STRATHCONA, ONT. MARLBANK, ONT.
ST. LAWRENCE PORTLAND CEMENT COMPANY - MONTREAL

..... MANUFACTURE
"RATHBUN'S STAR" "BEAVER" "ENSIGN"

BRAND BRAND BRAND
For Prices Write THE RATHBUN COMPANY, Deseronto, Ont.
Sole Sales' Agents

CLIFF SAFETY AUTOMATIC REEL



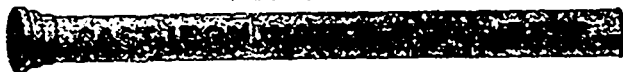
Unreeling hose opens
valve; water received in
ten seconds. For Public
Buildings and Warehouses,
standard of the U.S. Govern-
ment.

F. E. CAME, MFR.
17 Place d'Armes Hill,
MONTREAL.

Montreal Pipe Foundry Co. Ltd.

SUCCESSORS TO
DRUMMOND, McCALL PIPE FOUNDRY CO. LTD

MANUFACTURERS OF



OFFICES
CANADA LIFE BUILDING

MONTREAL

Cast Iron Water and Gas Pipes, etc.

Londonderry, Nova Scotia

SPECIAL CASTINGS
FLANGE PIPE
BRANCHES
HYDRANTS
VALVES
VALVE BOXES

LONDONDERRY PIPE FOUNDRY

ALEX. GARTSHORE, President. J. G. ALLAN, Secretary and Treasurer. JAS. THOMSON, Vice-President and General Manager.

**THE GARTSHORE-THOMSON PIPE & FOUNDRY CO.
LIMITED.**

Manufacturers of:::

Flexible and Flange Pipe,
Special Castings and all kinds of
Waterworks Supplies.



3 inches to 60 inches diameter.

For Water, Gas, Culvert and Sewer

HAMILTON ONT.