

GOWRIE AND BLOCKHOUSE COLLIERIES, LIMITED.

OF NEWCASTLE ON TYNE.

MINE AND LOADING PIERS, PORT MORIEN, COW BAY

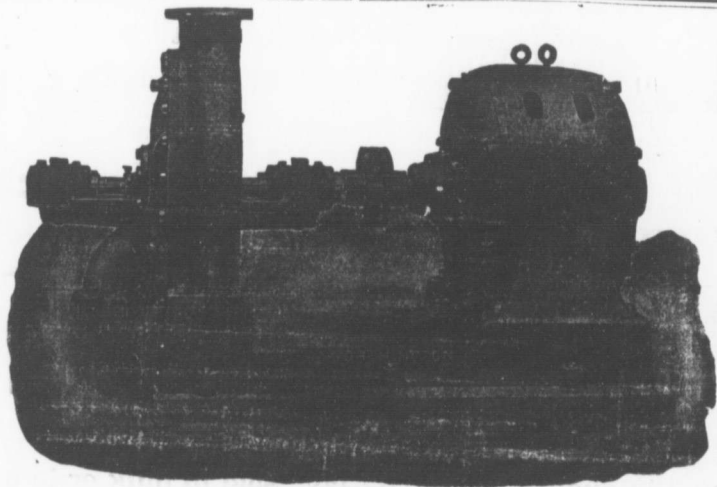
CAPE BRETON, N. S.

Miners and Shippers of **GOWRIE COAL.**

The Reputation of this Coal has Steadily Advanced during the past 40 years and the Output of the new Mine is fully up to the old Standard of Excellence.

Especially designed Piers for the rapid delivery of coal into Vessels by Roe and Bedlington's Patents.

OFFICES:—Canada, Port Morien, Cape Breton, Nova Scotia. England, Newcastle on Tyne.



PATENTED

EIGHT INCH SINGLE-STAGE Worthington TURBINE Pump

Driven by an induction motor. Capacity 1,800 Gallons per min. against 70 feet head.

THE JOHN McDOUGALL

Caledonia Iron Works Co., Limited.
Builders for Canada **MONTREAL.** Send for Catalogue.