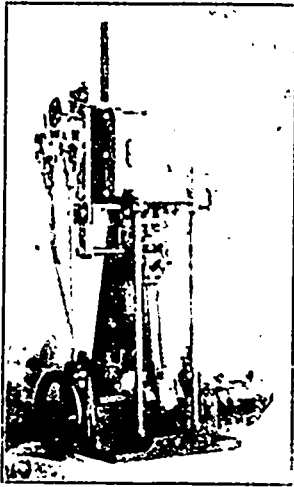


ALBERT BELL ENGINE WORKS
DUNNVILLE, ONT. Makers of
YACHT ENGINES, 1 H.P. to 50 H.P.
Safety Water Tube BOILERS
PROPELLER WHEELS
Stationary Engines and Boilers



WRITE FOR CIRCULARS

KEMP MNFG. CO.
TORONTO.

Galvanizing
DONE FOR THE TRADE.

GET OUR PRICES.

F. W. Hore's Sons, HAMILTON, ONT.
Manufacturers of
Wheels, Wheel Materials, Shafts, etc.



**Mills,
Factories,
Warehouses**

Are best protected
against fire by being
equipped with

**Eddy's Indurated Fibreware
FIRE PAILS**

We are the only manufacturers in Canada
of this celebrated ware.

The E. B. EDDY CO., Limited.
Hull, Montreal, Toronto

**THE
PETERBOROUGH
CANOE CO. LTD.**

PETERBOROUGH,
Ont. Canada.

SEND FOR CATALOGUE

WEBSTER VACUUM Feed Water Heater

IN PROPORTION

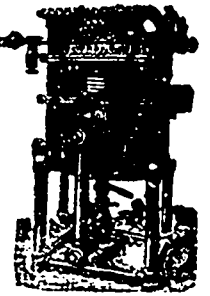
<p>MAXIMUM EFFICIENCY ECONOMY DURABILITY CONVENIENCE SIMPLICITY</p>	<p>To the extent that Feed Water Heaters in general are investigated and understood the more the WEBSTER VACUUM FEED WATER HEATER and PURIFIER is appreciated.</p>	<p>MINIMUM ATTENTION SPACE WASTE REPAIRS COST</p>
--	--	--

< FOR THE REASON THAT IT REPRESENTS >

BEFORE PURCHASING ELSEWHERE GET A BID FROM US.

Particular experience for ten years in this department of engineering, and the fact that over 1,000 Webster Heaters are in use is self-explanatory.

Satisfying particulars, embracing details of construction, materials, operation, and exclusive results will be sent on application. Built in several types and construction for special needs and service.



DARLING BROS., RELIANCE WORKS, Montreal.

A. KLIPSTEIN & Co., Anilines, Dyestuffs
—and—
Chemicals
122 Pearl Street, New York.

DELIVERY MADE AT NEW YORK, MONTREAL OR HAMILTON.

WRIGHT & DALLYN, AGENTS, HAMILTON, ONT.

The Cost of Steam.

To decide which type of boiler will produce steam at the lowest cost it is necessary to consider the cost of the boiler, the evaporation of water per pound of fuel, and the expense of keeping the boiler in working order.

Compare our boiler, the "Mumford Improved" with a water tube boiler, and it will be found that ours has the advantage in all these points.

COST.—Our boiler costs less on account of its simpler construction.

EVAPORATION.—Our boiler is internally fired and, therefore, more heat is absorbed by the water. The water circulation, an important factor in evaporation, is similar to and probably more rapid than that of a water tube boiler. Tests made by disinterested parties, with the same coal, resulted in favor of our boiler.

EXPENSE. The furnace of a water tube boiler requires re lining with fire-brick frequently, a large item of expense which is not required with our boiler.

ROBB ENGINEERING CO., Limited, Amherst, N.S.