

# THE Newfoundland Magazine.

VOL. I.

NOVEMBER, 1900.

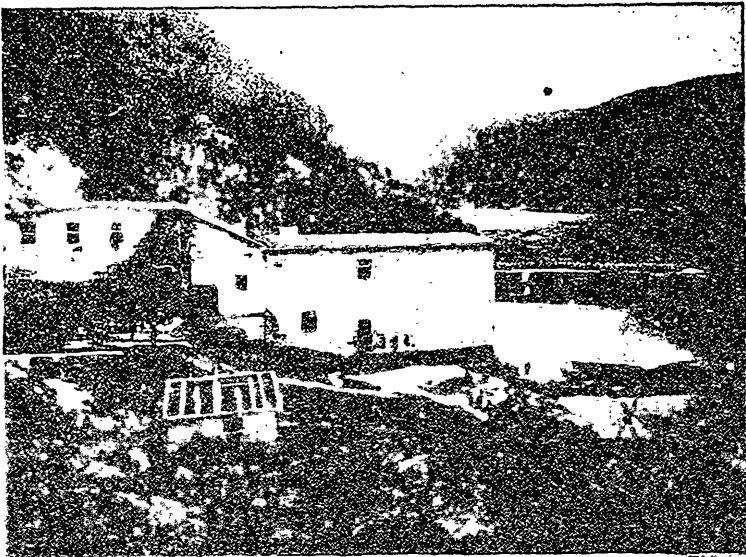
No. 5

## A VISIT TO SNOOK'S ARM.

BY R. E. HOLLOWAY.

**A**FTER a beautiful sail through the tickles and bays of Pilley's Island, we crossed Long Island Tickle, and lay snugly in the charming harbour of Little Bay Island. We had a full opportunity of seeing the striking scenery of the narrow entrance, for we had both the light summer wind and a strong tide against us - and we took two hours to go a few hundred yards. It is one of the prettiest harbours in our Island of pretty harbours,

and we soon had some of its beauties recorded on our photographic plates. Our ship's company had enjoyed the hospitality of Mrs. James Strong, and now the question was: Where next? Should we return in our steps, winding amongst the woody islands of Notre Dame Bay, or should we cross the bit of open sea which separated us from the high cliffs of the Tilt Cove mainland? The novelties of Tilt Cove and of Snook's



FACTORY AT SNOOK'S ARM.