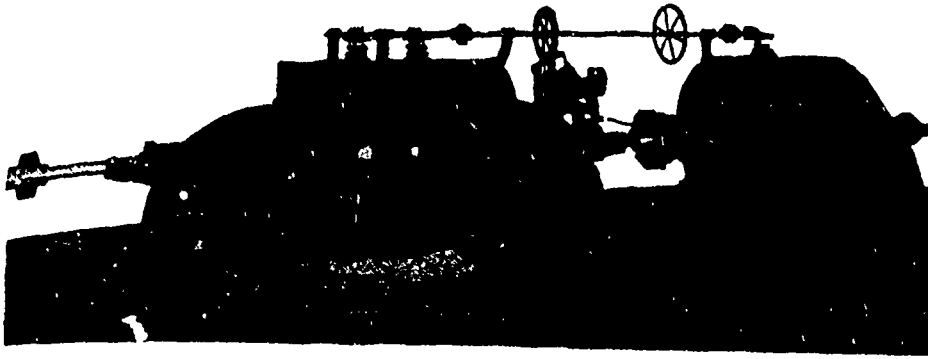


The McCormick Turbine © All Sizes Tested at Holyoke.....



Enormous Power and Higher Efficiency than is obtained from any other make.

Hundreds Driving Electrical Machinery.

Write for Catalogue.

This Engraving represents three 21 inch Turbines, operating under 64' head, in the Plant of Chas T. Westcott, Baltimore, Md.

S. MORGAN SMITH CO. - YORK, PA.

TENDERS WANTED
 A Weekly Journal of advance information and public works.
 The recognized medium for advertisements for "Tenders."
CANADIAN CONTRACT RECORD
 TORONTO.

The **National Tube Works Company**

The Largest Makers of All Sizes and Kinds of
Special Wrought Mild Steel and Best Wrought Iron Tubular Goods in the World.

Control the Manufacture of
Wrought Tubular Goods,
 —Made of a High Class of Mild Steel from the Ore to the Finished Product—and Unqualifiedly Recommend **NATIONAL STEEL PIPE** for all uses as Better than any Iron Pipe made.

McKEESPORT, PA.

GEORGE WHITE-FRASER

MEM. CAN. SOC. C. E. MEM. AM. INST. ELEC. ENG.

Consulting and Constructing Electrical Engineer

PLANTS RECENTLY INSTALLED: Goderich, Stratford, Clinton, Collingwood, Chatham, N. B.; Fraserville, P. Q.; Windsor Mills, P. Q.; &c., &c.

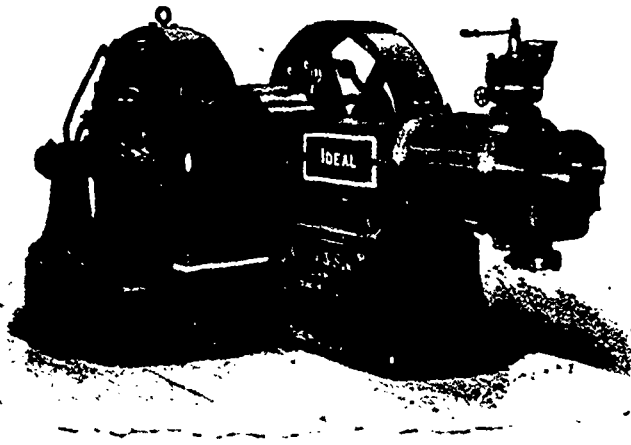
SPECIFICATIONS, PLANS, TESTS AND SUPERVISION

THE **Goldie & McCulloch Co.**

MANUFACTURERS OF

LIMITED

**IMPROVED
 STEAM
 ENGINES
 AND
 BOILERS**



Flouring Mills, And the Erection of Same in the Most Complete Style of Modern Improvement.

**Wool Machinery,
 Wood-Working Machinery
 Saw Mill, Shingle and Stave Machinery,
 Fire and Burglar-Proof Safes and Vault Doors.**

THE "IDEAL" HIGH SPEED ENGINE, DIRECT-CONNECTED.

SPECIAL ATTENTION called to the "WHEBLOCK" IMPROVED STEAM ENGINE, also the "IDEAL" HIGH SPEED ENGINE, cut of which appears above, as being Unequalled for Simplicity, Efficiency and Economy in Working, and Especially Adapted for Electric Lighting, Street Railways, Etc.

† **GALT, ONT.**