

- 44,812 Emmet B. Raymond, St. Louis, Mo., hydro-carbon burner.
 44,813 Thomas L. Willson, Leakville, N.C., electric smelting of refractory ores.
 44,814 Paul Bubiau, Marseilles, France, steam generator.
 44,816 Charles H. Stainton, Toronto, Ont., fender for street cars.
 44,817 Phelam McCullough, Toronto, Ont., underground conduit for electric wires.
 44,818 Robert Rushton, St. Thomas, Ont., locomotive boiler.
 44,821 Charles F. Lavender, Toronto, Ont., axle bearing for wheels.
 44,826 Bell Telephone Co. of Canada, Montreal, Que., multiple telephone switchboard system, and four other patents relating to multiple switchboard system for telephone exchanges, telephone exchange apparatus, and switch for telephone exchanges.
 44,833 Benj. Ewing, Brighton, Ont., milk agitating machine.
 44,834 Wm. Hewitt, Brantford, Ont., cultivator.
 44,842 Herman F. Dernell, Athens, N.Y., combined clod crusher and land roller.
 44,843 Jacob R. Hikesell, Charlotte, Mich., thill coupling.
 44,844 Everett F. Morse, Trumansburg, New York, roller bearing.
 44,850 John B. Davids, North Dartmouth, Mass., marine vessel.
 44,855 Wm. S. Kinsinger, Bantam, Ohio, wire connector.
 44,860 Fred. Hart, Poughkeepsie, N.Y., steam turbine.
 44,862 Albert Hillerscheidt, Berlin, Prussia, self-locking hoisting device.
 44,866 Edward E. Roberts, Red Bank, New Jersey, generator for steam.
 44,868 Samuel W. Martin, Springfield, Ohio, wind engine.
 44,870 Dixon Best, Peterboro, Ont., steam boiler.
 44,877 Wilson R. Smith, Beloit, Wis., friction clutch.
 44,879 Louis E. Dubois, Toronto, Ont., fender for cars.
 44,880 William Doran, Skowhegan, Me., device for raising and lowering electric lamps.
 44,883 Fred. R. Nies, Swampscott, Mass., external joint for escape pipes, etc.
 44,893 Stanley C. Peuchen, Toronto, Ont., tire for bicycles.
 44,897 Consolidated Car Heating Co., Albany, N.Y., rotary engine.
 44,899 John P. McCloskey, Sarnia, Ont., crank shaft.
 44,902 Wm. H. Brownlow, Brockville, Ont., car brake.
 44,903 Johan M. Olsen, Christiania, Norway, roofing and roofing tile.
 44,905 Heath Rail Joint Co., Minneapolis, Minn., rail joint.
 44,908 Robert L. Sentinella, London, England, metallic flux for refining iron.
 44,909 and 44,910, Bell Telephone Co. of Canada, Montreal, Que., test system for multiple switch-boards, for multiple switch-board system.
 44,916 Arthur S. Atwater, Cleveland, Ohio, arc lamp.
 44,917 James H. Mason, Brooklyn, N.Y., electric battery.
 44,918 Maurice Lorois, 5 Avenue Allard, Nantes, France, gas engine.
 44,919 Alexander Phillipsborn, Berlin, Prussia, overhead conductor for electric railways.
 44,922 Bell Telephone Co. of Canada, Montreal, Que., station apparatus for telephonic and telegraphic purposes.
 44,925 Lawrence Electric Co., New York, N.Y., electric engine.
 44,930 Frank H. Cornell, New York, N.Y., oil injector.
 44,937 L. H. Weronneau, Montreal, Que., switch and frog for railways.
 44,941 D. G. Bolton, Cooperstown, N.Y., snow and ice velocipede.
 44,943 Minian C. Smillie, M. D., Gaspé Basin, Que., machine for preparing gas.
 44,946 George Low, Ottawa, Ont., lock for mail bags.
 44,949 Charles E. Munro, Washington, D.C., explosive.
 44,950 Thomas A. Macdonald, Paterson, N.J., device for utilizing water power.
 44,952 Julius Begtrup, Ridgeway, Pa., governor for engines.
 44,959 Thomas Harris, Detroit, Mich., electric railway.
 44,960 John Duncan, Toronto, Ont., ticket and machinery for issuing ticket.
 44,961, 44,962 and 44,963 Riley J. Hosner, Romeo, Mich., track for sliding doors, for a door hanger, and for a stay roller.
 44,964 Wm. Pratt, Montreal, Que., sheet metal vessel.
 44,970 Sylvester P. Denison, Belleville, N.J., autographic telegraph

WM. McMILLAN, Mgr. JNO. S. TOWER, Supt. H. S. BURRELL, Sec.-Treas.

The Mac Machine Co.

BELLEVILLE, Ont.

Manufacturers of and Dealers in

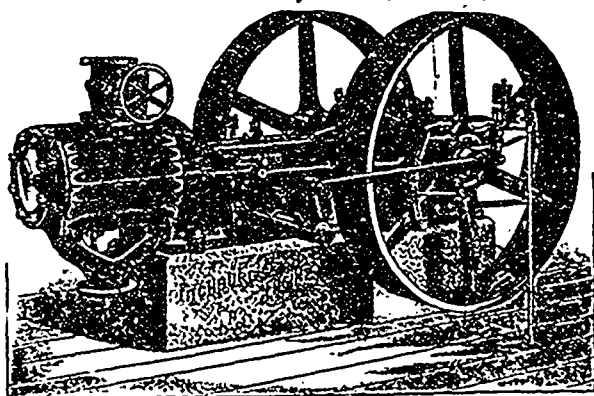
Rock Drills, Hoisting Engines, Boilers, Wire Rope
 Rubber Hose and Couplings, Batteries, Fuses

COMPLETE PLANT OF

MINING, TUNNELING AND QUARRYING MACHINERY

Burrell-Johnson Iron Co., Ltd.

YARMOUTH, Nova Scotia



Sole Manufacturers for Canada of the

FITCHBURG AUTOMATIC HIGH-SPEED ENGINES

Closest Regulation. Closest Economy. Very Best Stock and Work.

Of the Fitchburg Engine now running in the power house of the Yarmouth Street Railway Co., Mr. J. S. Skinner, engineer of the company, writes: "The Fitchburg engine installed by you is giving perfect satisfaction. It is very neat in appearance, strong and durable. It runs perfectly cool and noiseless, and as for workmanship and close regulation there is no better. Our voltage stands the same, be it light or heavy loads. As all know the sudden change of load to which a street railway generator is liable, I think the engine gives as near perfect regulation as can be had."

Adapted for Electric Lighting and all places where a reliable High-Speed Engine can be advantageously used.

The Steam Boiler & Plate Glass Ins. Co.

OF CANADA.

Head Office - LONDON



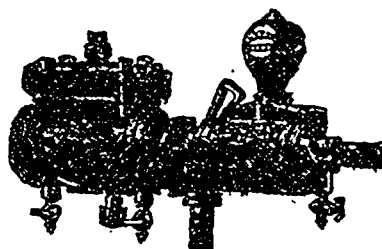
DIRECTORS:

E. JONES PARKE, Q.C., President F. A. FITZGERALD, Esq., Vice-President
 HON. DAVID MILLS, M.P. JOHN MORISON, Esq. T. H. PURDOM, Esq.

JAMES LAUT, Manager J. H. KILLEY, Consulting Engineer
 JOHN FAIRGRIEVE, Chief Inspector

Subscribed Capital, - - \$200,000.00
 FULL GOVERNMENT DEPOSIT

The MARSH Steam Pump



Specially adapted for Boiler Feeding. It returns its exhaust into feed water, heating it from 40 to 50 degrees. All sizes, and with capacity ranging from 200 to 1,500 gallons per hour. Send for Catalogue. We also manufacture Engines and Boilers, all sizes. Grist and Saw Mill Machinery, Water Wheels, Shafting, Hangers and Pulleys. Steam Launches, Shipman & Acme Coal Oil Engines and Boilers, both Stationary and Marine.

... Write for Particulars ...

JOHN GILLIES & CO.

MANUFACTURERS

CARLETON PLACE, Ont.