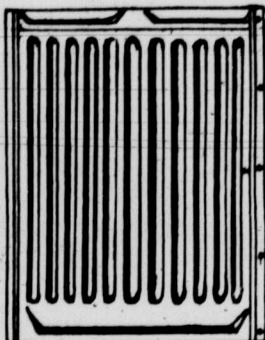




Our Duty To Canada and the Empire

HAVE you realized the great responsibility that rests upon us all here in Canada, at this trying period in the history of the Empire? As Canadians, living at home in peace and tranquility, our duty is quite as important as that of our sons who have gone to the front.

That duty is to PRODUCE---and in order to provide for the enormous increase in production it is necessary for YOU, upon the farm, to put your barns in shape to accommodate your increased production, and for US, here in the factories to turn out metal building materials for the proper safeguarding of your increased crops.



We are doing our duty to Canada and the Empire, inasmuch as we, The Pedlar People, have not discharged a workman

Executive Office and Factories, Oshawa, Ont.

nor reduced one man's salary since the War started. Our factories are still running with the same complement of men as employed one year ago, before the war was thought of.

Our warehouses are piled to the roof with raw materials--our stockrooms are filled with an abundance of manufactured articles.

Are you doing YOUR share?

Write us for quotations on Oshawa Galvanized Steel Shingles, Corrugated Iron Roofing and Siding, Brick and Stone-faced Sidings, Corro Crimp Roofing, Silo Covers, Culverts, Eaves Trough and Conductor Pipe, Finials and Ornaments---anything and everything in Sheet Metal.

Write To-Day for Booklet. G.G. Address Branch Nearest You.

The PEDLAR PEOPLE, Limited

ESTABLISHED 1861

80 LOMBARD STREET, WINNIPEG, MAN.

MONTREAL TORONTO OTTAWA LONDON

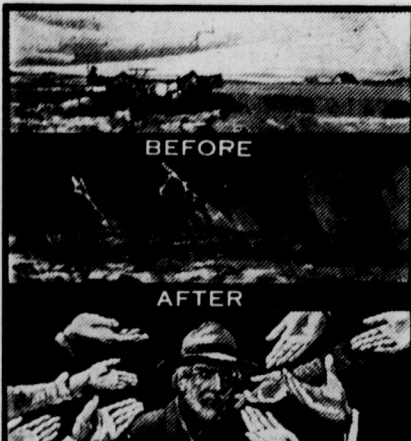
MODEL

Implement Shed and Repair Shop

FREE: Plan, Elevations and Estimate.

The Western Metal Products Company

Dept. G., 481 Toronto St., Winnipeg



WHERE'S THE
MONEY COMING FROM?
THE CHILDREN THE HOME THE
STORE ALL NEED MORE AND
MORE MONEY

**A BRITISH AMERICA
HAIL POLICY
MEETS SUCH CASES**

INSURANCE \$2.00 TO \$10.00 PER
ACRE AS DESIRED

PROMPT ADJUSTMENTS
PROMPT SETTLEMENTS

ASSETS OVER \$2,000,000.00
LOSSES PAID OVER \$38,000,000.00
ESTABLISHED 1833 A.D.

**BRITISH AMERICA ASSURANCE CO.
HAIL DEPT. WINNIPEG, MAN.
SEE OUR LOCAL AGENT OR WRITE US**

WHEN WRITING TO ADVERTISERS
PLEASE MENTION THE GUIDE

More Power for Your Tractor

More power from the same amount of fuel, or the same power from less fuel—that is one secret of tractor economy.

PREMIER MOTOR GASOLINE

gives most power per gallon. It is pure; quick-starting; clean burning. It is always uniform and does away with carburetor adjustments.

Its comparatively low cost is made possible by the unrivalled refining and distributing facilities of this company.

SILVER STAR ENGINE KEROSENE

A powerful and reliable refined oil for kerosene-burning tractors. The established favorite with Canadian farmers for years.

Branch Stations Throughout the Dominion

**THE IMPERIAL OIL COMPANY
Limited**



Made in CANADA

ADVERTISING is the foundation of all successful enterprises. If your advertisement appeared in these pages it would be read by over 34,000 prospective buyers. Patronize our advertisers—advertise yourself—and we will all be successful.



Lethbridge Imperial Coal

THE CANADIAN SOOTLESS

The High Grade Coal with the reputation. Ask your Dealer.

Canadian Coal & Coke Co. Ltd.
Winnipeg and Edmonton

300 Carloads of New Brunswick

POTATOES

COMING WEST

We control their distribution in Western Canada. These potatoes carry Dominion Government Certificate "FIRST GRADE." They are strongly recommended for Seed by the Dominion Botanist. SPECIAL PRICE on these and on

**ONTARIO POTATOES
AND WESTERN PRAIRIE AND TIMOTHY HAY BALED**

We have IRISH COBBLERS, DELAWARES, EARLY OHIO, BEAUTY OF HEBRON, EARLY CARMEN, BOVEE, and other splendid varieties.

We will finance Government and Municipal Relief Orders for Hay, Potatoes, etc.

Write, Wire or Phone to

The Wilton Produce Co.
502 Confederation Life Bldg., Winnipeg
Phone: Main 3487

WHEN WRITING TO ADVERTISERS
PLEASE MENTION THE GUIDE