

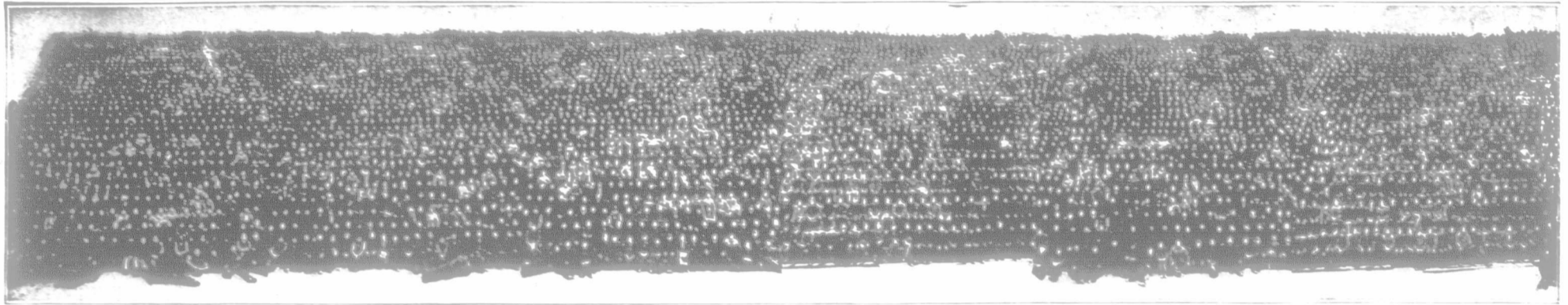


THE MACHINES THAT MADE AMERICA FAMOUS



DEERING LIGHT - DRAFT IDEALS

THE BEST LINE OF GRASS AND GRAIN HARVESTERS ON EARTH.



NINE THOUSAND PERSONS EMPLOYED BY THE DEERING HARVESTER COMPANY.

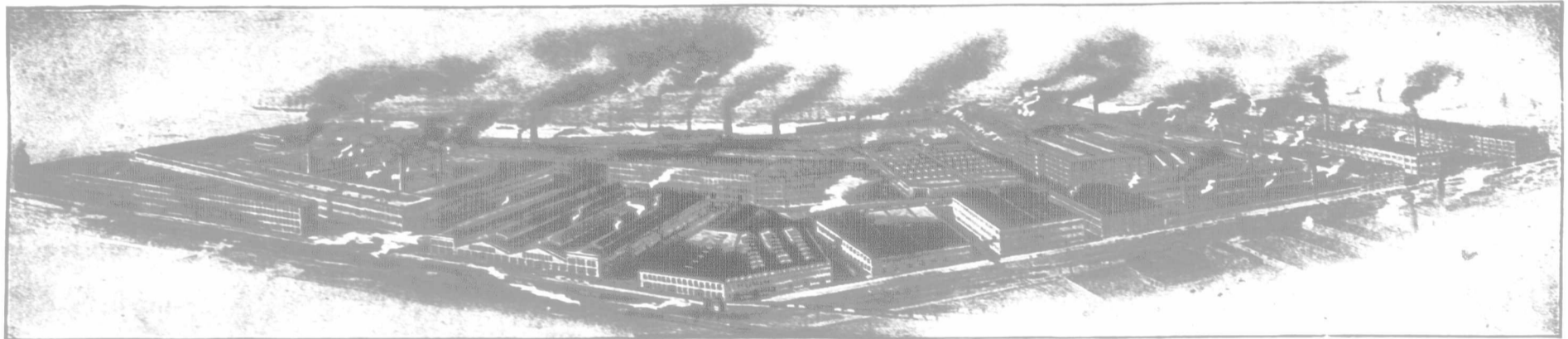
This engraving is reduced from a photograph 18 feet in length. The original is shown in the main exhibit of the Deering Harvester Company at Paris Exposition. The continuation of this picture near bottom of page.

The Deering Line for 1901 includes :



Grain Binders, Mowers, Rakes, Oil.

Corn Binders, Reapers, Twine, Knife Grinders.

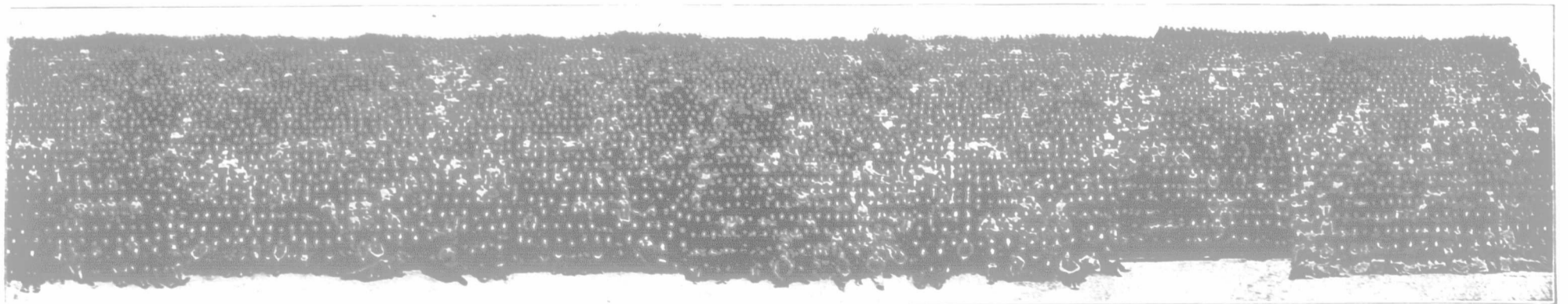


DEERING HARVESTER WORKS, CHICAGO, U. S. A.

The largest harvester works in the world. Eighty-five acres in area. Employed 9,000 people, in addition to 13,000 local agents in America alone, during 1899. Largest in output, sales, and size of plant.

The DEERING FACTORY was first to introduce the following valuable inventions and improvements:

- Marsh Harvester, 1858. Appleby Binder, 1878. Single-Strand Binder Twine, 1880. All-Steel Frame Binder, 1885. Roller and Ball Bearing, 1891.



Deering Harvester Company,

Factory and Main Office :

CHICAGO, U. S. A.



Canadian Branch Houses :

- TORONTO, ONT. MONTREAL, QUE. LONDON, ONT. WINNIPEG, MAN.

