

Questions and Answers.

Miscellaneous.

Weeds in Asparagus Bed.

I have an asparagus bed which is several years old, but I have not been able to keep it hoed, consequently the weeds and grass have got to quite a height. Would it be all right to let it go and cut the weeds when I cut the asparagus tops off? C. W.

Ans.—The trouble is that the grass and weeds are liable to go to seed if left too long, and thus infest the ground for another year. In a permanent crop like asparagus, an effort should be made to keep the weeds from seeding.

Sweet Clover.

I sowed a bushel of sweet clover on fall wheat ground last spring, but it does not appear to have caught. If I cultivate the ground after cutting the wheat and sow sweet clover again will it get sufficient top to stand the winter? R. J. McC.

Ans.—It depends a good deal on the fall. If there is plenty of moisture in the soil and we do not have a prolonged dry spell the sweet clover sown around the first of August should obtain a good stand before winter, and could be used for hay, pasture or seed production next summer.

Hens Dying.

I have a flock of hens which appear healthy, but every few days one will be lying dead under the roost in the morning. I am feeding some beans in a boiled feed. What is the cause? A. S.

Ans.—It is difficult to diagnose the case. It may be that the birds are over-fat and are housed in a poorly-ventilated pen. This will cause death in some instances. Over-feeding, especially in hot weather, may cause apoplexy, which would result in sudden death. If the birds are fat and you wish to retain them for egg production, reduce the ration a little, force them to take plenty of exercise and have them where they can get an abundance of green feed.

Speed of Cream Separator.

I would like to run my cream separator by power and can't get the right speed on the separator, and would like to know what size pulley I would have to have on my separator. My engine speed is 400 per minute, and has a 16-inch pulley on, and the speed governor pulley the drive pulley is 9 in. and the other two speed pulleys are 4 and 2½ in. dia. and the separator has to run 60 rev. per min., but I would like to only run my engine about 250 rev. per min. At 250 per min. what size pulley would I have to have on my separator to run it 60 revs. per min? B. R.

Ans.—It seems to me that you may have some difficulty in reducing the speed of the engine from 400 to 250 revolutions per minute. For lack of information regarding the type of engine, etc., it is impossible to say to what extent the speed may be satisfactorily reduced. In all probability the best plan would be to run the engine at 400 and change the size of the pulley on the engine. Assuming that you run the engine at 400 revolutions per minute and replace the 16-inch pulley on the engine by a 9-inch, and belt the separator to the 2½-inch pulley on the speed governor pulley, you would require a pulley 16½ inches in diameter on the cream-separator to run it at 60 revolutions per minute. If you can reduce the speed to 250 revolutions per minute and retain the 16-inch pulley on the engine, it would require an 18½-inch pulley on the engine. I believe the former plan would be the better of the two.

The rule for finding the size of pulley would be interesting and useful to you in working this out for yourself. The principle is this,—that the revolutions per minute of the driver pulley times its diameter in inches is equal to the revolutions per minute of the driven pulley times its diameter in inches. This relationship must always hold. If the values of any three of the four factors, namely, driver, its R. P. M., the driven pulley and its R. P. M. are known, the unknown or fourth factor can be easily obtained by process of multiplication and division.

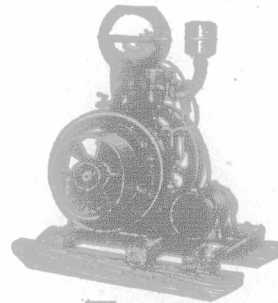
With this information and a few suggestions given you ought to have no trouble in working out a satisfactory installation of your cream separator. R. R. G.

A word about LISTER FARM ENGINES

During the War the Lister Works in England were controlled by the British Government—But the manufacture of Lister Engines proceeded on a larger scale than ever—The British and Allied Governments wanted Lister Engines—and used them on every war front.

The Modern Farmer wants the Lister Engine

Because in Efficiency, Workmanship and Equipment it is away ahead of all others. Compare the Lister with any of its competitors and its superiority will at once be obvious to you. You wouldn't waste money on inferior seed. You wouldn't throw away cash on inferior stock—Then apply the same reasoning to the purchase of your FARM POWER, and CHOOSE THE LISTER



R.A. LISTER & CO. (CANADA) LIMITED TORONTO

PROSPECT FARM JERSEYS

Herd sire, Torons of Prospect Farm 12094, whose sire, Lous Torono 106614, dam and both grandams, have an average R.O.M. record of 14,261 lbs. milk and 966 lbs. butter, 85 per cent. fat. Lous Torono is a grandson of Hood Farm Pogis 9th, 55552, and Hood Farm Torono 60326, both Gold Medal bulls. Torono of Prospect Farm, dam Keetsa 333656, has a 2 year Record of 10,627 lbs. milk, 617 lbs. 85 per cent butter and on retest has milked 60 lbs. milk a day. She is a daughter of Hood Farm Torono 99265, whose first 17 daughters, as 2-year-olds, averaged 8,746 lbs. milk and 600.01 lbs. butter 85 per cent. fat. We have for sale young bulls sired by Torono of Prospect Farm and from R.O.P. cows, also choice young bulls sired by Brampton Bright Togo 5780, and cows and heifers bred to Torono of Prospect Farm, due to calve Sept. and Oct. Pure bred and high grades. The high grades will make choice family cows. R. & A. H. BAIRD, R. R. 1, New Hamburg, Ont.

BRAMPTON JERSEYS

THE LARGEST JERSEY HERD IN THE BRITISH EMPIRE

At Toronto Exhibition, 1919, we won twenty-five of twenty-seven first prizes. We now have for sale first-prize young bulls from R. O. P. dams, as well as females of all ages.

B. H. BULL & SONS :: Brampton, Ontario

ALL BULLS OF SERVICEABLE AGE SOLD

A few young bulls sired by Financial Raleigh King, son of the \$6,000.00 Financial Beauty King for sale, from R.O.P. dams.

JAS. BAGG & SONS, (Woodbridge, C.P.R., Concord, G.T.R.) EDGELEY, ONT.

Laurentian Producing Jerseys—The oldest bull we have at present is a year old youngster, sired by our herd sire, Broadview Bright Villa, No. 5630, and from Brampton Astoria, one of the best imported cows in the herd. We also have others younger of similar breeding, as well as a few bred heifers for sale. FREDERICK G. TODD, Owner, 801 New Birks Bldg., Montreal, P.Q. Farm at Morin Heights - F. J. WATSON, Manager

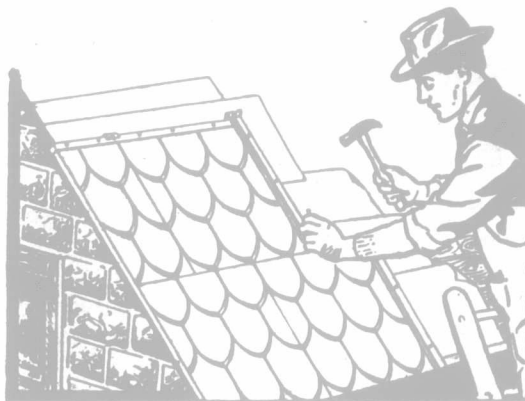
Canada's Most Beautiful Jersey Herd
The Woodview Farm
Herd headed by Imported Champion Rower, winner of first prize with five of his daughters on the Island of Jersey, 1914, second in 1916, and again first in 1917. We are now offering for sale some very choice bull calves, ready for service, sired by imported bulls and from Record of Performance imported prize-winning cows. Also some cows and heifers. Prices right. We work our show cows and show our work cows.

Glenhurst Ayrshires—headed by Mansfield Mains Sir Douglas Hague, No. 16163 Imp.—have been noted for their depth and size, good teats and smoothness of conformation. If you are looking for a combination of size, type and production—plus high butterfat—write me or visit the farm. Males and females of all ages for sale. James Benning, Summertown Sta., G.T.R. Williamstown, C.P.R. Bell Telephone 78-3 Cornwall

Oxford Down Sheep, Pioneer Flock—We are offering this season an up-to-date lot of yearling and two-shear ewes; also ram and ewe lambs. HENRY ARKELL, Office and Telegraph, 207 Sherman Ave. South, Hamilton, Ont. Shipping Stations, Guelph and Corwin.

ELMHURST LARGE ENGLISH BERKSHIRES
From our recent importation of sows, together with the stock boar, Sudden Torredor, we can supply select breeding stock, all ages. Satisfaction and safe delivery guaranteed. H. M. VANDERLIP, Breeder and Importer, R. R. 1, BRANTFORD, ONTARIO
Langford Station on Brantford and Hamilton Radial.

"Galt" Galvanized Steel Shingles



The "GALT" Shingle locks together in such a way that there is no weak point in its entire construction, and it is ornamental as well. It is, therefore, the Ideal Shingle for Dwellings, Churches, Schools, Public Buildings, Barns, etc.

We also manufacture

Corrugated Sheets Barn Ventilators
Silo Roofs Barn Roof Lights

THE GALT ART METAL COMPANY, LIMITED

Galt, Ontario

RAPLA STOCK FARM COTSWOLDS

Yearling rams for flock headers. Yearling ewes and breeding ewes in car lots.

Chas. J. Shore, - Glanworth, Ont.

Kent or Romney Marsh Sheep—The hardiest and best grazing mutton and wool sheep of Great Britain. Successfully acclimated wherever they are required. Annual Ram Show and Sale—350 specially selected Rams at ASHFORD, Kent, on September 23rd and 24th, 1920; also sales at SITTINGBOURNE, Kent, on October 13th, 1920, and MAIDSTONE, Kent, on October 15th, 1920. Descriptive pamphlet, list of breeders and all information from W. A. Ball, 12 Hanover Square, London, W. 1

Shropshire Yearling Ewes bred to Bibby's 84 (Imp.) ram and ewe lambs sired by him. Two Shorthorn bulls. Two Clydesdale stallions. W. H. PUGH, Myrtle Station, Ont.

Cotswolds and Yorkshires

Special Offerings: Bacon type sows and boars for sale. Orders taken for full delivery of Ram Lambs. Write us. R. HONEY & SONS, - Dartford, Ontario

Chester Whites

Our sixth importation has just arrived. One litter farrowed in quarantine—sired by Champion boar Ohio State Fair—and a sow in pig to "Volunteer," Champion of Nebraska. Also ten litters sired by 1st and 2nd prize aged and champion boars at C. N. E. Unrelated pairs as a baby herd. Illustrated catalogue.

JOHN G. ANNESSER, Tilbury, Ont.

Berkshires—Boars ready for service and boar pigs, rich in the blood of Lord Premier's Successor 161500, Grand Champion, 1914, Champion sire of 1915, 1916, 1917. His descendants have won Grand Champion honors at the largest and strongest shows of 1919. The Champion Berkshire barrows of 1918 International were double grandsons of Lord Premier's Successor. We have shipped many Berkshires to Canada with satisfaction to customers. Prices on request. HOOD FARM, INC., Lowell, Mass.

YORKSHIRES

Pigs of different ages, both sexes, from large litters.

WELWOOD FARM

Farmer's Advocate, London, Ontario

CHESTER WHITES

Choice young pigs, both sexes, sired by Gaiway Collaway Edd, imported, No. 19831. Also a few gilts bred to same boar. Geo. E. Norry, R. R. No. 1, Tilbury, Ont.

Inverurie Tamworths

Young sows, bred for September and October farrow. Choice boars of all ages. LESLIE HADDEN, Box 264, Sunderland, Ont.

Meadow Brook Registered Yorkshires—Ten choice young boars fit for service, from prize-winning stock. Prices reasonable for quick sale. G. W. MINERS, R.R. No. 3, Exeter, Ontario

TAMWORTHES

Young sows, bred for June and July farrow, and boars for sale. Write or phone.

JOHN W. TODD, - Corinth, Ontario

Sunnyside Chester Whites and Dorsets—in both sexes, any age, bred from our champions. In Dorset ram and ewe lambs, by our Toronto and Ottawa champions, and out of Toronto, London and Guelph winners. W. E. Wright & Son, Glanworth, Ont.

Prospect Hill Berkshires—Young stock, either sex, for sale, from our imported sows and boars; also some from our show herd headed by our stock boar, Ringleader. Terms and prices right. JOHN WEIR & SON, R.R. 1, Paris, Ont.

DUROC JERSEYS

My herd has won more firsts and championships in four years showing at Toronto than all other herds of Durocs combined. Write for prices. CULBERT MALOTT, R. R. 3, Wheatley, Ont.