

Albert County's Wealth is Only Now Beginning to Enjoy Proper Recognition.

The Richest Piece of Land in the World is on the Eve of Great Development—Outside Capital is Pouring In and a Busy Time is Expected.

The year now closing has been one of steady progress. The resources of the county have become better known in the markets of the world. The mountains of Snow-white Gypsum have yielded their full quota to the export trade, while the latter Dominion demand for the manufacturer "Calcined" plaster, and "Rockwall" brand, has greatly increased.

In the Oil Belt. At least two additional wells have been bored which have proven large producers of natural gas, the general use of which has revolutionized the heating, lighting, and power systems in the villages of the county, where the service has reached, as well as the city of Moncton.

The oil shale areas have been tested, and their width and depth approximately determined, placing beyond doubt the realization of the dreams of Archibald Byers, McHenry, and other British prospectors and promoters.



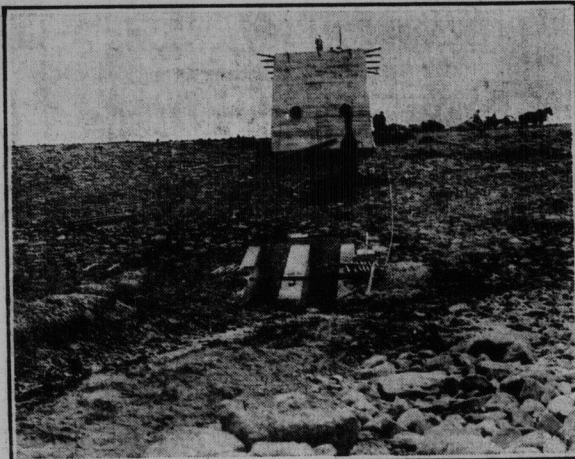
Victoria Mills, Fredericton.

late Rev. James Wallace, a brother of the late John Wallace, M.P.

It was considered an excellent bridge, and stood the strain of the heavy traffic until one day late in the fifties a tall yeoman of that time, named Rufus Peck, whose face and physical make up bore a strong resemblance to that of Abraham Lincoln, walking beside his four-ox-team with its heavy load of logs, was surprised at the very centre of the bridge by the complete collapse of the structure, the noise of which sounded through the valley like peals of thunder. The horrified country folk who hastened to the scene, were much relieved on finding the tall angular teamster

standing unharmed beside the dead oxen and amid the debris of the wreck, age still holding in his mouth the clay pipe which for years had been his solace.

This bridge was some years later replaced by one built under the supervision of the late Geo. Stiles and stood well until the early nineties. Amid all the commercial, industrial, and social prosperity of Albert Co., today as the great world wide festival season comes around, there stands out with prominence the fact that the boys of the county are beginning to realize that the farm home offers the surest and sweetest returns for honest labor and careful investment, and that the intelligent country farmer fills a prominent place on the councils of the people.



The Dam at the New Water Works—Moncton

The latter in one of his flights of honest optimism said, "I expect my descendants will in the century see the harbor at Grindstone Island properly equipped and filled with ships, carrying from this county cargoes of practically undeveloped, while the beautiful, gently sloping hillsides will be dotted with the country residences of English gentlemen.

The properties known as the Chemical Works in the valley north of Shepody Mountain, which the late John Steadman, a gentleman well-known and highly respected as a geologist and prospector, pinned his faith, has for some time found favor with a very wealthy company of American capitalists, who lately had an eminent expert visit and look over the property, with a view to its acquisition and operation next spring.

The Lunenburg properties 7 miles north of Albert, have been operated by the owners, mostly local men, on a small scale and specimens submitted to English, American and Canadian specialists have in each case been the reported assaying a highly satisfactory per centage to the company whose stock issue is being well received.

In no year in the county's history, has so much public expenditure been made. The new Vapor Flash Light on a concrete tower, the most modern and powerful at the head of the bay, has been placed in position on Grindstone Island.

A public work the finest and best built east of St. John, has been placed in the Shepody River at Albert.

A large Federal Government expenditure has been made to the road and approach to the public wharf, at Hopewell Hill. Extensive repairs have been made on the government piers at Hopewell Cape.

Harvey Bank Wharf under the directions of Frank S. Reid has been ordered raised and new topped.

A new bell buoy placed at the entrance to Waterside Harbor will prove a boon to navigators.

Generous expenditures on the public roads have been made and the careful system of supervision now in operation had brought the main public highway up to a state of excellence never before reached in this locality. All unprejudiced citizens, admit this fact. A visiting autoist stated that the highway from Hillsborough to Albert was the finest stretch of highway of that length he had seen in the province.

In Harvey a piece of roadway has been built up for a distance of about twenty rods to a height of six feet to raise it above the high-water level of the highest tides and the old Anderson Hollow Bridge is now being replaced by a stone culvert and an earth fill.

A break and earth fill has been placed in the Keivar gully, west of Albert. A fine span bridge with concrete abutments has been placed over Chalk's Creek.

A bridge over the brook at Chipman Smith, at Desforges Creek is a well built structure.

The finishing touches have just been put on the historic Memil Bridge, a short mile north of Hopewell Hill. This bridge is over a ravine some fifty feet deep, through which runs a branch of the new mill creek.

It was first bridged in the early thirties, under the supervision of the

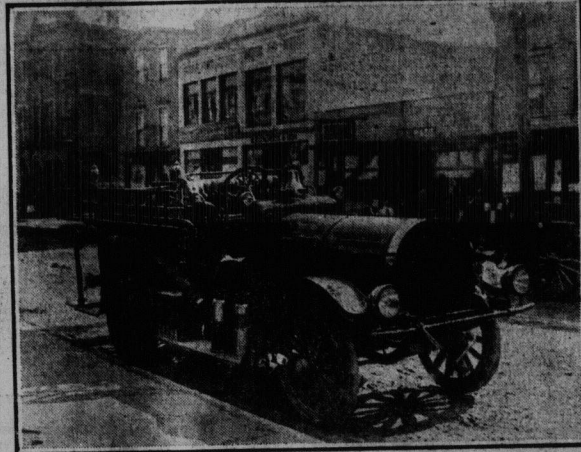
Was but a minstrel of the castle; she Had birth and rank and breeding. From out her bower window, that was screened By swaying lattices, and whispered sweet And tender words, as lovers when they meet! (As you do, Paul, to this, our shy Janet. What? So, my girl? I thought you lovers yet— But you have quarreled? 'Tis a pity!) Well, Love spread its wings o'er Lady Rose— While summer wanned; and home at last there came The castle's lord; and stately knight And dame Were in his train. They filled the armoured halls And shook with reveling the old stone walls. For Christmas came apace; a season blest, A holiday more honored than the rest, Since this was added to its olden spell— It was the birthday of fair Rosabel! Now, Yuletide legends tell that Love, the blind And mischief-making elf, is always kind. At Christmas, (Paul, my boy, did you not know? This truth? And this is Christmas Eve, too!) So Three centuries ago, these lovers met And pledged their troth—as you did once Janet! Now close beside the southern tower tall, Bloomed, in an angle of the castle wall— And it may be that still there blooms And grows— A strange white flower, called the Christmas Rose

The Christmas Rose.

The fire burns bright; draw near and I will tell The legend sweet of Lady Rosabel, Who lived and loved three hundred years ago In merry England.

Fair she was; and so Full many a valiant knight had been content To wear her favor at the tournament, But Rosabel was willful—nor afraid To flout her lovers, like a modern maid!

(What say you, Paul? And you, you blushing Janet? Your pardon! I am old, and I forget.) But Rosabel was willful; day by day She sat among the daisies and stitched away At tapestry all stiff with golden thread, And seemed content; but in her pretty head Ran riot thoughts of certain speaking eyes And certain silver voice it were not wise To listen to with beating heart—for he

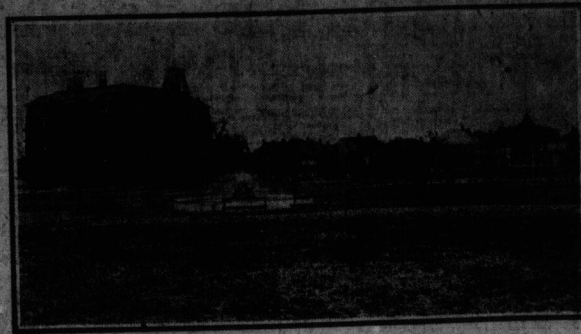


Moncton's New Motor Fire Engine.

Beloved it was of all the damsel fair; The highest favor that a knight might wear. And so none thought it strange, that he who sang Until with sweetness all the rafters rang. When given guerdons of his choice should say, "Upon a quest I ride at dawn away. This gift I choose, since choice upon me falls: The fairest Christmas Rose within the walls. 'Tis blooms." And pages whispered as he went, "You minstrel seemest easily content!" On Christmas morning silent was the bower Of Lady Rose. They found a half-worked flower Upon her broidery frame; the spread Was all unprayed; the mirror overhead Had lost her face; the casement open thrown Swung in the wintry wind; and snow as blown Across the cushioned sill. A tiny page Who loved his lord too well to fear his rage, Bore this, the minstrel's message: "Tell my lord That I have taken what his knightly word Hath freely given me. The castle's Rose Within a minstrel's heart and garden grows Forevermore!" And high-born maidens tell Scant gold, but wealth of love had Rosabel.

So "Hallelud" it Was Mistress—And what's your baby's name, Hannah? Colored laundress—Hallelud, ma'am. We done name him from de Bible. Mistress—Hallelud! Is that a Scripture name? Colored laundress—Why, yes, ma'am. Ain't you never read "Hallelud be thy name?" With Other Feelings She—Before we were married you solemnly declared that you never could be happy without me. He—True; but marriage has made another man of me.

Victoria Park and School—Moncton



A Hot Dish for a Cold Day

During the chilly Autumn weather it is best to start the day with a warm meal that not only gives stomach comfort, but supplies the greatest amount of body-building material with the least tax upon the digestion. Keep the body warm and strong by eating

SHREDDED WHEAT

the food that fortifies you against sudden changes of temperature and which contains more real body-building nutriment than meat or eggs and costs much less. After you have tried all the others you will come back to Shredded Wheat—always the same price—always clean—always pure—always the same.

Always heat the Biscuit in oven to restore crispness. Two Shredded Wheat Biscuits with hot milk or cream will supply all the energy needed for a half day's work. Try Toasted TRISCUIT, the Shredded Wheat wafer, for luncheon, with butter, cheese or marmalade.

The Canadian Shredded Wheat Company, Limited
Niagara Falls, Ont.
Toronto Office: 40 Wellington Street East W-35

MECHANICAL ENGINEERING

IN ALL ITS BRANCHES

Marine and Stationary Engines, Steam Boilers, Ships' Tanks, Mill Machinery

Established 1853

Structural Steel Work

Including Cast Iron Columns, Coal Doors, Fire Escapes, Sash Weights, and all other castings required in building construction. Ask for estimates.

With modern equipment, skilled labor, and experience covering more than three quarters of a century, we have every facility to handle, promptly and satisfactorily, every branch of Mechanical Engineering, and will be pleased, at all times, to furnish plans, specifications and all necessary information.

Heavy Repairs a Specialty

Large Stock of Beams, Angles, Tees, Boiler Plate, Nuts, Bolts, etc.

Tugs, Dredges, Scows

Propeller Wheels Iron and Steel Ship Repairing, Marine Castings in Iron and Brass of every description. Estimates and all information furnished promptly.

Originators and Sole Makers of the ESSEX MARINE ENGINE—Gasoline Power

PHOENIX FOUNDRY

JAMES FLEMING—
Successor to George Fleming & Sons,
SAINT JOHN, N. B.