

Dependable Truck Service

Proven principles of design, perfect construction and units of recognized standards are all evidences of that perfection which makes for dependable truck service.

Under all conditions of motor transportation National Motor Trucks have met the stress and strain of service with a big reserve strength, and untapped energy and an extra power which few motor trucks can measure up to.

For dependable performance, economy of operation and durability of construction, National Motor Trucks acknowledge no superior.

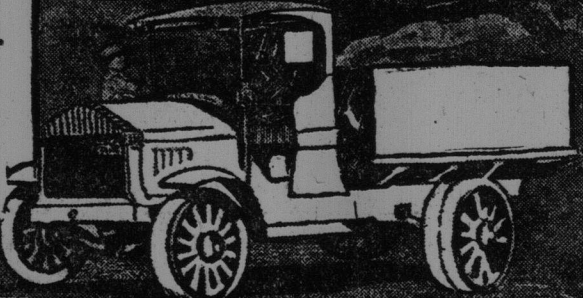
NATIONAL MOTOR TRUCKS are Built in Canada.

Five Models—1 ton, 2 ton, 3½ ton, 5 ton trucks and 6 ton tractor—size to fit any and every business need. Write for Illustrated Catalogue.

NATIONAL STEEL CAR CO., LIMITED.

HAMILTON - CANADA

Local Representatives
NOVA SALES CO., LIMITED
101-107 Germain Street
St. John, N. B.



What Truck?
Ask the Driver—He Knows

NATIONAL MOTOR TRUCKS

The Life And Education Of Children

J. P. Murphy, Boston Expert,
Spoke on the Subject
in Halifax

(Halifax Chronicle).

That the whole emphasis in the care of children is placed upon the wrong period of life, and that education often commenced too late to eradicate the indelible impression acquired in early childhood, was the message which J. P. Murphy of Boston brought to Rotarians at their weekly luncheon at the Green Lantern yesterday. Mr. Murphy, who has come to Halifax to address the Child Welfare Conference, spoke of children with a deep understanding, embellishing his discourse with anecdotes illustrating the subject. The luncheon was well attended and a number of guests were present. Dr. Hattie occupied the chair.

Mr. Murphy said the wrong period in the care of children was emphasized. The present educational system counted for little before a child had reached the age of seven years, and then the stress was continually increased until the adolescent period of twelve or thirteen. An infant's physical future, he said, was determined before it had passed three years; its mental before it had passed four. The brain of a four-year-old child was of the same weight and size as that of an adult, only the convolutions differing, but children were not credited with sufficient intelligence.

Mr. Murphy blamed fathers and mothers for ignorance and indifference. He accused the present generation of parents of not being on their jobs and of "passing the buck to others," as he phrased it. The family was the only proper school for children. Children under six, he said, had experiences which could never be wiped out and the effects of external influences were tremendous. In New York City.

Last year, in New York City alone, one-quarter of a million children did not have sufficient food and care to profit by the elaborate public school facilities provided for them. This meant that the treatment they received during their first six years hampered them for the rest of their lives. According to all criminologists, criminals developed before the age of sixteen from children who had been ruined in infancy. This condition could and should be prevented.

A child, continued Mr. Murphy, idealized his parents. If they deceived him, something would gnaw at the heart of that which would make a man of him. Protective suspicion hardened and embittered. Children had an uncanny power of analysis; they could read true, and their impressions were enduring.

He sounded a warning against the surrender of recreation by the home to places of public amusement, often rendered injurious by commercialism, and advocated early sex-education.

A HOT SPOT Chalmers wrings the power from gas

As any one knows there is just so much power in a gallon of gas; and the great trick in a gas engine is to get all the power out and convert it into mileage.

Yet do you know how little power actually is taken out of gas by the average car? And how much power goes out the exhaust?

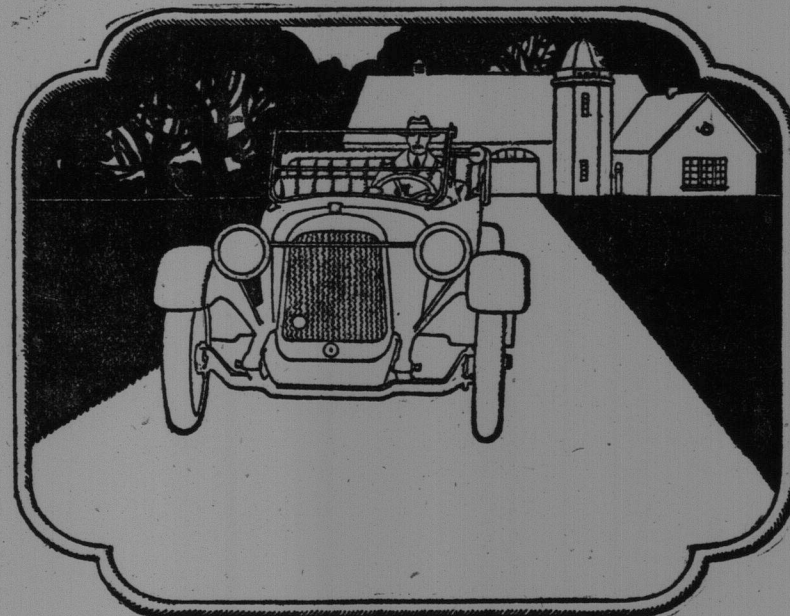
Ask any motor car engineer.

A Chalmers engine simply wrings power out of gas. Its famous Hot Spot "cracks up" the gas, just as constant chewing of food prepares it for good digestion before swallowing.

To get power out of gas the gas has got to be "cracked up." Then it has got to be placed into the cylinders in a "dry" condition. This the great Ram's-horn does to a work of engineering art.

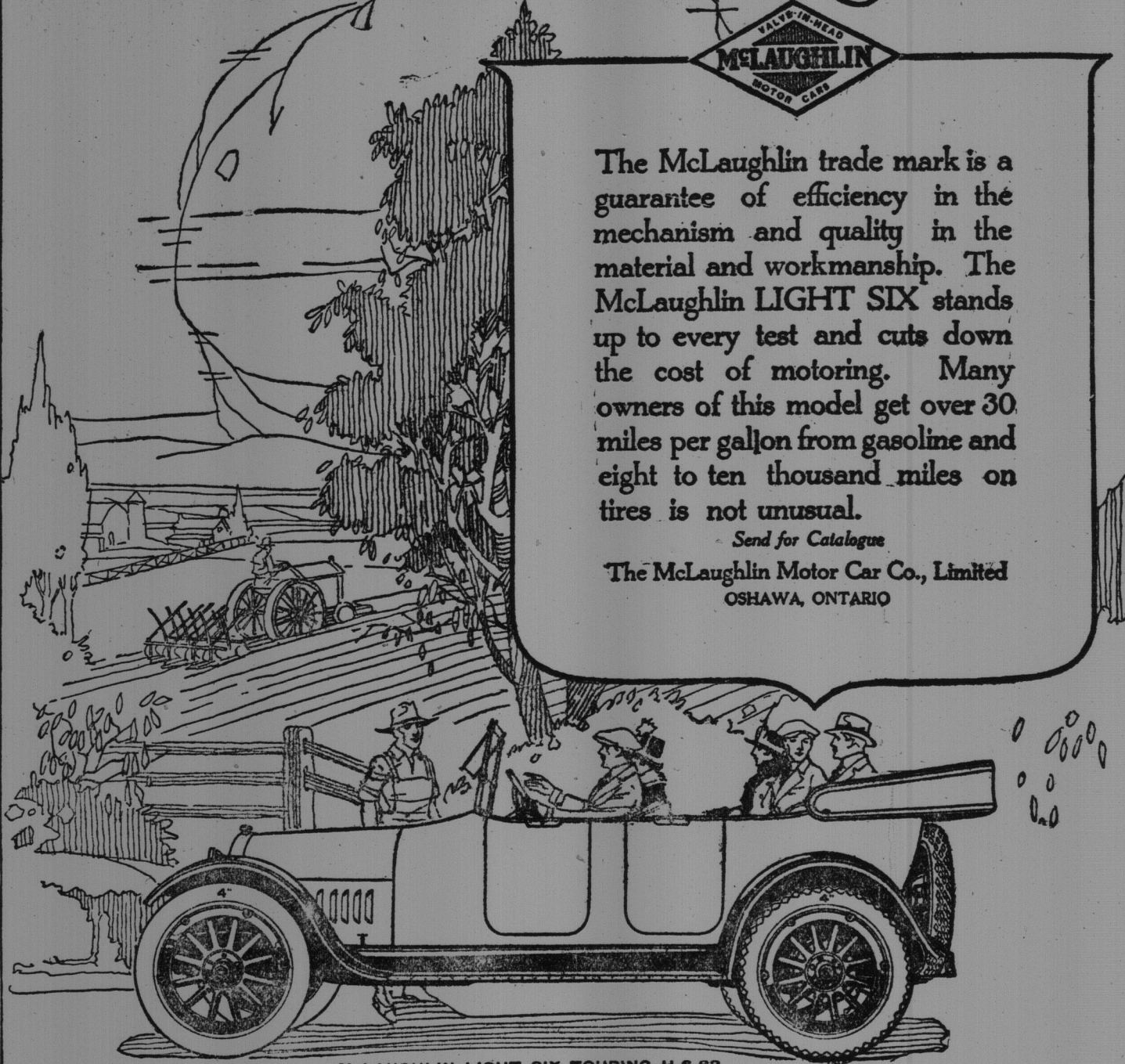
You can tell how true this is the minute your foot touches the accelerator button of a present day Chalmers and you get the feel of that throbbless, frictionless power that means so much to your peace of mind, your tires, your bank balance and your self satisfaction.

CHALMERS MOTOR CO. OF CANADA, Limited
WINDSOR, ONT.



MOTOR CAR & EQUIPMENT CO., LIMITED,
Showrooms: Cor. Duke and Charlotte Sts.
Garage: 108 to 112 Princess St. St. John, N. B.

The Light Six— A GENUINE McLAUGHLIN CAR



The McLaughlin trade mark is a guarantee of efficiency in the mechanism and quality in the material and workmanship. The McLaughlin LIGHT SIX stands up to every test and cuts down the cost of motoring. Many owners of this model get over 30 miles per gallon from gasoline and eight to ten thousand miles on tires is not unusual.

Send for Catalogue
The McLaughlin Motor Car Co., Limited
OSHAWA, ONTARIO

THE McLAUGHLIN CARRIAGE CO., LTD.
140-144 Union St.

GRAY DORT

Ask—and be Convinced

FOR three years we have been telling the motorists of Canada what we knew about the Gray Dort—we who created and built it.

Thousands were convinced—and bought Gray Dorts as fast as they became available.

Thousands were skeptical—rode in Gray Dorts and are now our enthusiastic friends.

To those who still doubt, we say—talk to a Gray Dort owner and be convinced.

Ask him about the motor—that puts at your com-

mand a smooth, quiet flow of real power—instantly. Ask him about the comfort of this generously-large light car. Ask him about equipment—about economy of tires, gasoline. And the longer he has had his Gray Dort, the more enthusiastic he will be.

The touring car is \$1245; the Gray Dort Special—the car with added refinements and extra equipment, is \$135 extra; there are also a coupe, and a sedan. All prices f.o.b. Chatham and are subject to change without notice.

GRAY DORT MOTORS, Ltd.
Chatham, Ont.
In the U.S.—Dort Motor Car Co., Flint, Mich.

WM. PIRIE SON & CO.,
St. John, N. B.

