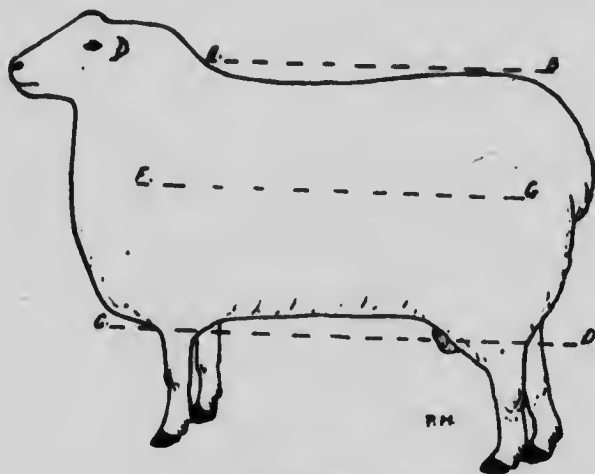


body, which is best done by applying a yard-stick or straight edge to the body of the sheep or ram.

1.—From the withers to the tail-head; one can judge the top-line.



Side-view.
a-b Top-line
c-d Under-line
f-g side-line

2.—From the lowest part of the sternum to the stifle-joint; one will judge the under-line.

3.—On each side from the point of the shoulder to the point of the thigh; one can judge the side-lines.

The straighter these lines, the more contact will there be with the yard-stick and more perfect shall be the conformation. The straight top-line does away with the convex and concave back. The straight under-line indicates the width of chest and hind quarters (pelvis), as well as an abdomen of normal size.

It is now easier to examine :

1.—The length of barrel length of ribs and especially the length of rump which indicates the width of legs.