

The asbestos after being graded, which is, however, in the entire discretion of every particular mine, is put in bags of 100 lbs. each. Cost of bags are from 5 to 6 cents each; cost of bagging, 20 to 25 cents per ton. The cost for transport to cars and loading vary from 10 to 60 cents a ton, according to distance from railroad.

In estimating the cost per ton of asbestos Mr. Klein says: "On this subject the opinions of the asbestos miners are very different, and while some claim to mine only on 50 or 60 tons of rock to the ton of asbestos, others go as high as 150. I am of the opinion that as a rule the quantity of rock mined to the ton of asbestos is greatly underestimated. Basing, on the capacity and actual work of our machinery appliances, the known quantity of lorry loads removed from a mine during a year, and the known average weight of each load, in relation to the totals of asbestos produced, I hold that one ton of asbestos to 100 tons of rock is a fair average. If we accept this the cost of production of asbestos may be set down as follows: drilling, 3½ cents; blasting, 3 cents; labor for removing rock and gathering asbestos in the pits, 25 cents, making a total of 31½ cents to the ton of rock, or \$31.50 to the ton of asbestos; \$7 for cobbing; \$1.50 for bags and bagging; 50 cents for loading; \$5.50 for supplies, which includes fuel, tools, iron, steel, timber, other materials and repairs; \$6 for general business expenses, such as management, insurance, offices, marketing and others; \$3.55, 10 per cent. wear and tear, calculated on a total of \$355,000 in plant, making a total of \$55.55 to produce one ton of asbestos. If we calculate now that we have to pay interest on a total invested capital of about two and one quarter millions of dollars, for which at least 10 per cent. must be expected, we have in our sales to average a price of at least \$80 per ton of asbestos."

The output of asbestos in 1880 was but 380 tons, valued at \$24,700. Since then, the industry has steadily increased, with the only exception of 1888, and reached in 1890 8,860 tons with a value of \$1,200,240. During the period between 1880 and 1890, the increase has been nearly 2,600 per cent, in tonnage and 5,100 per cent. in value.

Since 1880, the prices have been as follows: 1880, \$65; 1881, \$65; 1882, \$65; 1883, \$72; 1884, \$65; 1885, \$58; 1886, \$59.75; 1887, \$49; 1888, \$60; 1889, \$69.75; 1890, \$127; 1891, \$111.

During this time the imports of asbestos by the United States has increased from \$9,736 in 1880 to \$254,935 in 1890.

DRAUGHTS-CHECKERS

All communications to this department must be addressed directly to the Checker Editor, Mr. W. Foreyth, 36 Grafton St.

TO CORRESPONDENTS.

A. WHITE, Newfoundland.—This will be the last copy sent you to Little Bay; will renew sending as soon as we receive your new address.

SOLUTION.

PROBLEM 296.—The position was: black men 3, 13, king 26; white men 6, 15, 23, 25; white to play and win 23 19 a-23—19 25 21 16—7 26—23 15 11 12—16 2 11 19 16 19—12 6 2 w. wins.

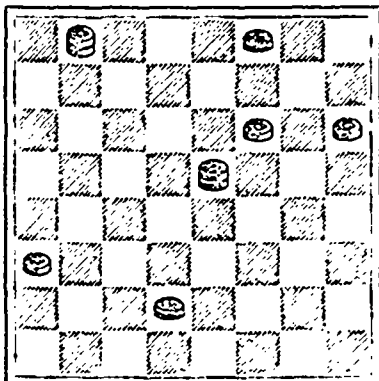
a At this point black might adopt a defence which many amateurs would find it difficult to overcome as follows: 13—17 *25 21 *16 12 6 1 *15 11 17—22 22 26 b-18—15 23—18

* Only moves to win.

b We have here arrived at a position which the average amateur will find hard to solve, and we present it as

PROBLEM 298.

Black men 3, 26, king 15.



White men 11, 12, 21, king 1.

White to play and win.

Who will send the first and shortest solution?

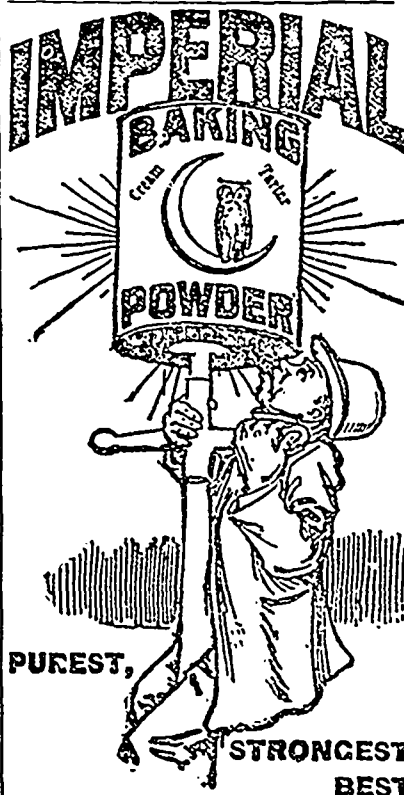
GAME 185.—"BRISTOL."

Played at Ilfracombe some years ago between J. Wyllie and P. Scotland. Wyllie's move.

11—16	9—14	2—18	10—19
24 20	22 17	31 27	11 8
16—19	11—15	7—10	9—14
23 16	27 24	21 17	8 4
12—19	14—18	1—6	19—23
22 17	17 14	17 13	4 8
8—12	10—17	5—9	14—17
17 13	21 14	*26 22	8 11
4—8	18—23	18—25	17—22
25 22	25 21	27 11	11 15
8—11	6—9	25—23	22—25
25 13	6 24	15 30	21

w. wins.

* W. Wyllie, says Mr. Scotland, remarked, that if I had not played this I should have lost the game.



JOHNSON'S ANODYNE LINIMENT

UNLIKE ANY OTHER.

For INTERNAL and EXTERNAL USE.
In 1810

Originated by an Old Family Physician.

Think Of It. In use for more than Eighty Years, and still leads. General Ration after Generation have used and blessed it. Every Traveler should have a bottle in his satchel.

Every Sufferer From Rheumatism, Nervous Headache, Diphtheria, Croup, Catarrh, Bronchitis, Asthma, Cholera-Morbus, Diarrhoea, La Grippe, Soreness in Body or Limbs, Stiff Joints or Strains, will find in this old Anodyne relief and speedy cure.

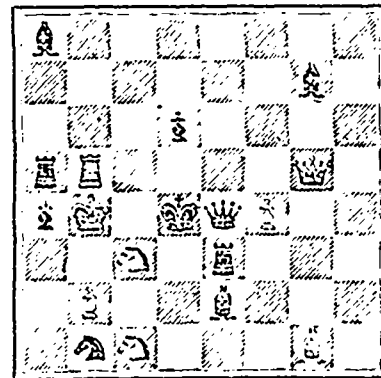
Every Mother Should have Johnson's Anodyne Liniment in the house for Croup, Colds, Sore Throat, Tonsillitis, Calf Cuts, Bruises, Cramps, and Pains liable to occur in any family without fail. It cures all these ailments like magic. Price, 25 Cts. per bottle. Sold by T. S. Johnson & Co., Boston, Mass.

CHESS.

Solution to Problem 128: Q to K7 129: R to B4. Solved by C. W. L.

PROBLEM No. 131.

Milwaukee Telegraph.
Black 9 pieces.



White 9 pieces.

White to play and mate in two moves.

GAMES 134-5-6.

As an illustration of the play of the masters competing at Belfast, the following games will prove interesting:—

WHITE.	BLACK.
Bird.	Steinitz.
1 P to K4	P to K4
2 Kt to B3	QKt to B3
3 B to K15	Kt to B3
4 P to Q4	P takes P
5 P to K5	Kt to K5
6 Kt takes P	B to K2
7 Castles	Kt takes Kt
8 Q takes Kt	Kt to B4
9 P to KB4	P to QK13
10 P to B5	Kt to K16
11 Q to K4	Kt takes R
12 P to B6	B to B4 ch
13 K to R sq	R to Kt sq
14 P to K6	Resigns
Mason.	T-chigorin.
1 P to Q4	P to Q4
2 B to B4	P to QB4
3 B takes Kt	R takes B
4 P takes P	Q to R4 ch
5 Kt to E3	P to K3
6 P to K4	B takes P
7 P takes P	Kt to B3
8 B to K5 ch	K to K2
9 Kt to B3	Kt takes P
10 Q to Q2	Kt takes Kt

11 Q to K15 ch
12 Q takes B ch
13 B to K8 ch

P to B3
K to B2
Resigns.

Blackburne.

1 P to K4
2 P to Q4
3 Kt to QB3
4 P takes P
5 Kt to B3
6 B to Q3
7 Castles
8 Kt to K2
9 Kt to K13
10 B to K3
11 Q to Q2
12 QR to K eq
13 Q to B sq
14 P takes B
15 RP takes Kt
16 K to K12
17 R to R1 q
18 R to R3
19 QR to R sq
20 B to K15
21 P to Q14
22 B takes BP
23 R to R4
24 B to K13
25 B to L6
26 Q takes Kt
27 R takes P
28 R takes P

Schwarz.

P to K3
P to Q4
Kt to KB3
P takes P
B to Q3
P to B3
Castles
B to KK15
Q to B2
QKt to Q2
KR to K sq
Kt to K5
B takes KKt
Kt takes Kt
B takes P
B to Q3
Kt to B sq
P to KK13
QR to Q sq
Kt to Q2
P takes P
P to KR4
P to K14
Kt to K3
Kt to L5 ch
B takes Q
P takes R
Resigns

Lasker at Newcastle won the fifth game from Bird, thus winning the match by 5 to 0—an improvement on the performance of two years ago, when Lasker won by 7 to 2 and 3 draws.

Nerve Tonic

Blood Builder

Send for descriptive pamphlet.

Dr. WILLIAMS' MEDICINE CO., Brockville, Ont., and Schenectady, N.Y.

50c. per box. 6 for \$2.50.

POWELL'S PIMPLE PILLS

Act Like Magic

IN REMOVING ALL BLEMISHES FROM THE SKIN.

PRICE 25 CENTS.

For sale by all Drug stores, or sent on receipt of price, by HATTIE A. MYLUS, HALIFAX, CANADA

WITHOUT A BLEMISH

'EL PADRE'

Reina Victoria.

JOHN PATTERSON,

Manufacturer of Steam Boilers, For Marine and Land Purposes

Iron Ships Repaired.

SHIP TANKS GIRDERS, SMOKE PIPES and kinds SHEET IRON WORK.

ESTIMATES given on application.

488 UPPER WATER STREET, Halifax, N.S.