

ADULTS 50c CHILDREN 25c
(WAR TAX INCLUDED)

**London Constable
Murdered While**

Jack Waddell, Middlesex Highway Traffic Officer, Shot to Death and Search is Made for "Gasoline Joe" Harlton, Suspected of the Crime—Suspect Was Head of Chicken Stealing Band and a Former Convict—Murderer Pulled Trigger First and Police Officer Died in Four Minutes.

Attempting to arrest Edward "Gasoline Joe" Harlton, 23, wanted as ringleader of a band of chicken

thieves, Jack Waddell, 25-year-old highway traffic officer of the Middlesex constabulary, was shot to death beside the Harlton home, 548 Egerton street, about 4:30 Saturday morning. Running along Egerton street to Dundas street immediately after the crime, Harlton, who is believed to have done the shooting, was seen by at least four people to enter the lane beside Hiram English's grocery store. From there he disappeared and has not yet been caught, though city and county police have been scouring the countryside in motor cars, and a minute description of the man has been broadcasted over the province. **Lived Only Few Minutes** Shot through the left lung, Wad-

minutes after Waddell phoned Harlton came out of the house and climbed into his car, and that the motorcycle officer crossed the road and engaged him in conversation. Waddell's handcuffs were found beside his dead body, which was seen as an indication that an attempt had been made to arrest the suspected gang chieftain. The finding of the handcuffs would indicate that the shot which killed Waddell was fired by a person in the machine. **Revolver Found** The probable sequence of events according to Wharton, is that the sight of handcuffs incensed Harlton to such a degree that he pulled his gun and fired. Waddell was in the habit of carrying his own weapon in his vest pocket, and it was found on the ground beside him, evidently falling out of its resting place when the officer crumpled and fell. None of the chambers had been discharged.

IROQUOIS THEATRE
--Petrolia

3 DAYS - September 21st - 22nd - 23rd - 3 DAYS

MATINEE MONDAY	Matinee Wednesday
4.15 p.m.	2.30 p.m.
15c -- 25c Adults 40c	Children 20c Adults 40c

Two Shows Each Evening
7.15 -- 9.30 **PRICES: 25c - 50c**
(TAX EXTRA ON ALL PRICES)



**'THE TEN
COMMANDMENTS'**

**Cecil B. DeMille's
Cin masterpiece**

You Can't Go Wrong
on Seeing this
Picture --
Your
Time and
Money Will
Be Well Spent

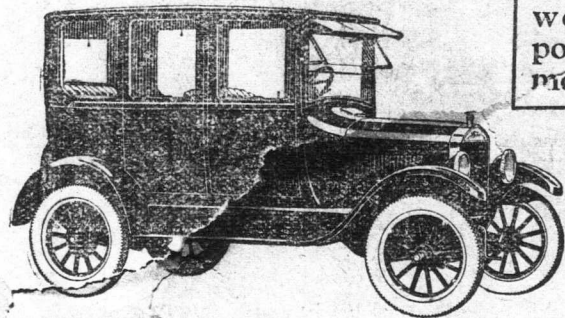
Miriam
and the
Golden
Calf

A
Paramount
Picture

The One and Greatest Picture of all time. We earnestly urge you to see this.

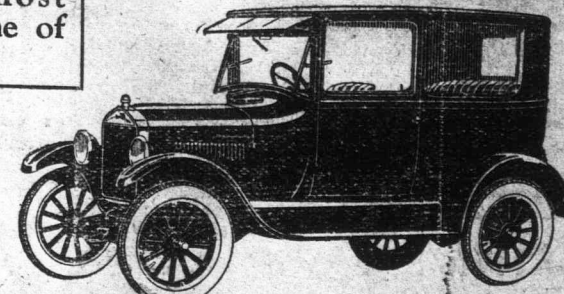
Maintaining Ford Leadership
—Highest Quality at Lowest Cost

Introducing many improvements in the world's most popular line of motor cars.



The Fordor Sedan

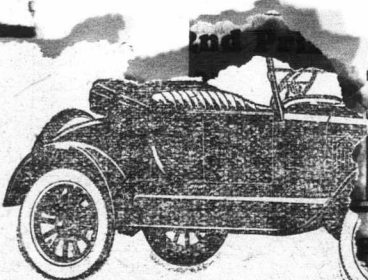
Color—Gray with black enamel running gear. Composite body. Nickeled radiator shell and headlamp rims. Leather-cloth sun visor, closed at both ends. Standard equipment includes starter, cord tires, demountable rims, dome light, windshield wiper, rear view mirror and dash lamp.



The Tudor Sedan

Dark Blue with black enamel running gear. All-steel body. Nickeled radiator shell and headlamp rims. Seats both front seats tilting. Cross-hatch ventilating windshield. Leather-cloth sun visor of new design, closed at both ends. Standard equipment includes starter, cord tires, demountable rims, windshield wiper, rear view mirror and dash lamp.

... 30th
... Today
... \$295
... records
... many finish
... are Aw
... least



The Runabout

Color—Black. All-steel body. Double ventilating windshield. Wide rear deck with compartment space greatly increased. Tool box under seat. Standard equipment includes cord tires, storm curtains opening with both doors, windshield wiper and nickeled headlamp rims.



The Touring

Color—Black. All-steel body of streamline design. Double ventilating windshield. Ford leather-cloth on Tool box under front seat. Standard equipment includes cord tires, weather-proof side curtains opening with all doors, windshield wiper and nickeled headlamp rims.

COUPON

Name.....

Address.....

Ford

CARS · TRUCKS · TRACTORS

MADE IN CANADA