

Canadian Cabbage Plants

OUR SHIPMENT OF
20,000 CABBAGE PLANTS

In to-day in splendid condition. Early and late varieties from the choicest seed. Remember we get our Plants from reliable growers, and they always give good results. Order quickly. Prices same as other years.

Edwin Murray.

GRAND MILLINERY DISPLAY

We cordially invite your inspection, and we will gladly give you all the assistance and attention you require in choosing your

SPRING HAT.

You owe it to yourself, you owe it to us, and you owe it to your purse to see our display before buying elsewhere.

HENDERSON'S,
THEATRE HILL.

Embroideries!

We have just received a very large shipment of

BEAUTIFULLY DESIGNED Mill-End EMBROIDERIES,

which we are now offering at

SPECIAL RATES.

Call and inspect our stock before purchasing elsewhere.

G. T. HUDSON,
367 & 148 Duckworth Street.

SLATTERY'S

Wholesale Dry Goods House.

WE OFFER to our Customers, the Trade and Outport Buyers, this Spring, the best selected Stock of Dry Goods of all kinds—American and English—yet put on the market.

See our Stock of Fleeced Underwear, Muslins, Embroideries and Dress Goods before purchasing elsewhere.

W. A. SLATTERY, Slattery Build'g,
Duckworth and George's Street—near City Hall.

REAL BARGAINS IN LADIES' SHOES



The "AMERICAN GIRL" and Mary Stuart Brands.

Regular \$3.50 to \$5.00 Values. Your Choice for \$2.50.

SEE WINDOW.

U. S. PICTURE & PORTRAIT Co.

Our \$2.00 and 2.50 Boots

Our Ladies' Fine Boots and Shoes, at

\$2.00 and \$2.50,

are nothing short of a **BEAUTY SHOW.**



We have these Shoes in the following styles and leather: Vici Kid, Russian Calf and Box Calf, Tan Vici and Tan Metal Calf, Blucher, Button and Laced. In Tans and Patent Colt. For Ladies' Fine Boots, Shoes, at \$2.00 and \$2.50 we excell.

SEE OUR WINDOWS.

F. SMALLWOOD, The Home of GOOD Shoes.

HALL MARKED

SILVER GOODS!

We have just received a large and varied stock of the following goods suitable for presents, and invite inspection:—

Tea Sets, Sugar Basins, Cream Jugs, Cruets, Butter Dishes, Table Sets of three pieces, Salt Cellars and Spoons in Cases, Custard Sets with Spoons, Preserve Dishes, Tea, Dessert, Table & Jam Spoons, Table Forks, Dessert Forks, Bread Forks, Pickle Forks, Butter Forks, Butter Knives, Five O'Clock Tea Spoons, Coronation Spoons, Mustard Pots, Cake Knives, Sweet Dishes, Sugar Tongs, Napkin Rings, And a great variety of the Best Plated Table Ware and other goods, comprising Watches, Clocks and other novelties.



Joseph ROPER

LATEST STYLES

Just Arrived ex S. S. Florizel.

THE LATEST AMERICAN STYLES IN

BOOTS and SHOES.

Patent Leather, Tan and Wine Colour.

Come and get your choice at our usual Low Prices.

Also, Ladies' and Gents' Douglas Boots and Shoes.

S. B. KESNER, Proprietor.
WHITE SHOE STORE 304 and 306 Water Street.

New Encyclopaedia.

THE 1911 NELSON ENCYCLOPAEDIA is based on the Harcourt's Encyclopaedia and the Nelson "Loose-Leaf." The amount of reading matter has been slightly increased. The best has been retained from both the older books, hundreds of new articles have been written and everything has been revised and brought up to date. It will be issued in twenty-five fortnightly shilling volumes in the handy size and neat cloth bindings familiar to all purchasers of the Nelson Popular Libraries. The paper is of excellent quality. Illustrations and diagrams elucidate the text where necessary and numerous full-page pictures add to the interest and value of the work. The Encyclopaedia itself will occupy twenty-three volumes and an English Dictionary and an Atlas as vols. 24 and 25, making the whole set a complete Reference Library for the home.

Vols. 1, 2 and 3 now in stock. Price 25c. per vol.

DICKS & Co. - - - Popular Bookstore.

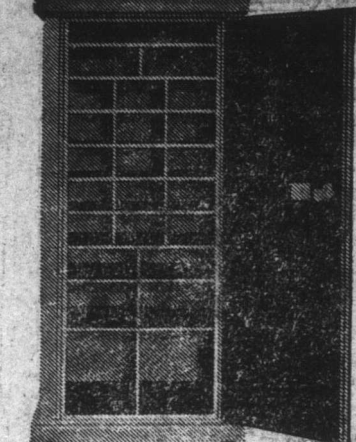
J. J. ST. JOHN, Duckworth-st.

Dr. Sloan's Liniment

IS A WONDER. Sure cure for

Rheumatism. Price, 25c. btl.

J. J. ST. JOHN, Duckworth St.



Pay only a trifle more for The Safe-Cabinet

Then you will have a cabinet that does all a wooden file can do plus this most important thing—protects your papers from fire, theft, dust and moisture. Measured by price alone, anyone can afford to buy *The Safe-Cabinet*. Measured by value, no one can afford to be without it.

FRED. V. CHESMAN, AGENT.

GOAL! GOAL!

Our shed is now Stocked with the genuine

N.S. COAL

just landed. We are also landing Fence Posts, Rails, Pickets, Billets, Junks, etc.

J. J. MULLALY & CO.

Phoenix Stores.

'PHONE 608.

A FEW DOZEN CHOICE FRESH LOCAL

EGGS.

A. H. MARTIN, AGENT.
'Phone 608.

TO BE SOLD or LET

That splendidly built and really first-class **VILLAGE RESIDENCE**, measuring 45 x 45, situated in St. John's most charming suburban district, the Waterford Bridge Valley. The residence is designed for comfort and convenience and contains

Basement, kitchen, pump room with electric motor, laundry, wine, vegetable and coal cellars and lavatory.

First Floor.—Drawing room, 19 x 18, dining room, 23 x 20, this is connected with drawing room by folding doors, and combined will make a large room of over 40 x 20; library, 17 x 14, reception hall with handsome fire place; mantel and mirror, kitchen, pantry and china closet, conservatory, 17 x 9 x 12.

Second Floor.—Principal bedroom, 22 x 20, with dressing room, 10 x 18, and clothes closet; second bedroom, 19 x 18, with dressing room, 10 x 9, and clothes closet; third bedroom, 15 x 14, and clothes closet; bathroom and lavatory (separated), large hall which could be converted into a smoking room.

Third Floor.—Four large bedrooms with fine and airy dressing rooms attached.

The house is in excellent repair and heated throughout with hot water and fitted with electric light, has first-class plumbing with hot and cold water to all fixtures. There are large coach houses, garage and stables on the premises. The property is freehold and measures 200 x 200 and abuts on both Waterford Bridge Road and road leading therefrom to South Side Road, with entrances to both roads, the grounds being well wooded and extending to Waterford River. There are magnificent views of the Waterford Bridge Valley and neighbourhood; the property is conveniently situated, being within five minutes' walk of the Waterford Bridge Railway Station, and 20 minutes' walk of the street terminus at the Cross Roads.

The property is excellently adapted for a first-class residence or suburban hotel.

For further particulars apply to **A. A. DELGADO, Water Street, may 28, 11**

An Intelligent person may earn \$100 monthly corresponding for newspaper. No canvassing. Send for particulars. Press Syndicate FIVE Lockport, N.Y. 10614

Job Printing of all kinds

WATCHES, \$2.00 up.	CLOCKS, \$3.00 to \$12.00.
TIMEPIECES, \$1.00 up—guaranteed	GOLD RINGS, \$2.50 to \$12.00.

Registered **UNION JACK** Registered
Trade Mark. **COPPER PAINT!** Trade Mark.

Absolutely the best for prevention of fouling and for keeping the Bottoms of WOODEN VESSELS CLEAN and SMOOTH. Made in England.

Sold by all Merchants and Ship Chandlers, etc., at St. John's, Nfld.

Sole Proprietors and Manufacturers.
HOLZAPFELS LIMITED,
ap18,8w Newcastle-on-Tyne, England.

"MOLASSINE" DOG CAKES.

"MOLASSINE" PUPPY CAKES.

The best food for Sporting Dogs, House Dogs and all kinds of dogs and puppies.

May be fed regularly, no other food being necessary.

- Keep all dogs healthy.
- Prevent and eradicate all internal Parasites and Worms.
- Create healthy conditions in the stomach, causing the whole nutriment in all the food to be digested.
- Make physics and worm-cakes unnecessary.
- Keep the dogs' skins and coats in fine condition.
- Owing to their antiseptic properties, when used as an entire food, Molassine Dog and Puppy Cakes prevent Dogs and Puppies from smelling and the excreta from being unpleasant.

BOOTS & SHOES.

FOR SPRING AND SUMMER WEAR.

Ladies' Fine Dongola Lace Boots from \$1.55 pr. up
Ladies' Fine Dongola Button Boots from \$1.70 pr. up
Ladies' Low Shoes, Lace and Strapped, from \$1.20 pr. up
Ladies' Low Shoes, Tan, from \$1.25 pr. up
Gents' Fine Lace Boots from \$1.85 pr. up
Gents' Fine Laced Blucher Shape Boots from \$2.40 pr. up

Also a full range of Football Boots.

WILLIAM FREW.

THE JOHNSTON WOOD COMPANY.

FACTORY: Long Pond Road.
'Phone: 730.

WE MANUFACTURE
Rails, Posts, Cut and Plain Pailings,
Laths and all kinds of Fencing Material.
All Orders for the above promptly attended to.

The JOHNSTON WOOD CO.

OFFICE, Prescott Street: 'PHONE 657.
FACTORY, Long Pond Road: 'PHONE 730.

WEATHER TORONTO fresh winds and showers winds and...

AUCTION
THE PE...
Auction—
On To-Morrow Inst. at...
At the Presce...
1 new silver-mounted hand brass mounted real good one—1 bicycles, 2 flat top pianos, 1 good hat new organ, 2 co several bedsteads All must go.
P. C. O'RISCO
m30,11p

Surplus
AUC...
To-Morrow, WE...
O'Clock...
prem...
MESSRS. A. I...
6 tierces Molasse...
114 1/2 bags No. 1...
18 brls. "Royal...
24 boxes Butter...
Surplus Store...
"BONAVENTURE"
45 1/2 bags No. 1...
4 1/2 bags Dama...
8 tierces Molasse...
7 brls. "Royal...
5 boxes Butter...
Surplus Store...
"BELLAVENTURE"
26 1/2 bags No. 1...
4 1/2 bags Dama...
12 brls. "Royal...
4 puncheons Mol...
14 boxes Butter...
Surplus Store...
"ADVENTURE"
A. S. I...
may 30, 11

Profession
DR. F. R...
SURGERY 148...
Telephon...
Office Hours: 1...
4; 7...
may 18, 11.

Mark Twain
If you are interest...
complete set of all...
half the former price...
ment plan it will co...
get full particulars...
two page book, "Li...
Mark Twain." Add...
Telegram Office.—m...