



WARM HOUSE

USE

Comfort felt.

Costs 75% Less than Plaster

No need for an expert mechanic to put it on.

None genuine without our Trade Mark as above, printed in Red.

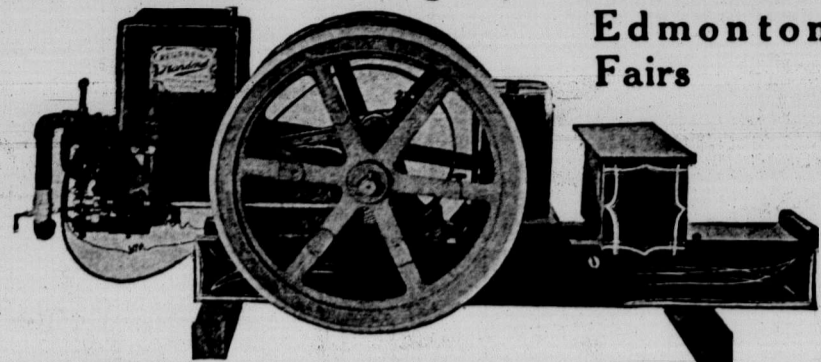
FOR SALE BY ALL DEALERS

Write for Free Sample and full information to

Fred J. C. Cox & Co.

403 Travellers Building WINNIPEG :: MAN.

This is the Engine that the Ten-year-old Girl operated at Regina, Saskatoon and Edmonton Fairs



MR. FARMER:—If you have from six to eight good horses and keep on an average of ten to twenty good pigs and fat hogs the year around and feed them properly with ground feed and chop, your grinding cost you not less than \$50.00 last year. If you fed the whole grain you lost twice that amount. If your time is worth anything you spent from \$25.00 to \$50.00 in time taking your grain to the feed mill. The proper solution is BY A RENFREW STANDARD ENGINE AND GRAIN GRINDER. It will pay for itself in two years in what it will save, and you can make double the cost price in that length of time by grinding grain for farmers on rainy days and at odd times.

Renfrew Standard

It Starts Without Cranking

THE REASONS for buying a RENFREW STANDARD are: that any person on your farm can operate it: it starts without cranking; the speed can be regulated while it is running. We see it under guarantee of five years and replace any parts that break or wear out within five year on account of being defective. Ask for booklet and our special long terms and prices to good reliable farmers. If you do not own a Cream Separator, write us for particulars concerning the STANDARD Cream Separator. Address our Calgary office if you live south of the Lacombe Branch of the C.P.R. in Alberta, otherwise write us as below.

The Renfrew Machinery Co., Ltd., Wiltoughby-Sumner Block, Saskatoon

MILK PRODUCTION IN CANADA

A very comprehensive bulletin under the above title has just been issued, belonging to the series of bulletins of the experimental farms. Its author, J. H. Grisdale, Director of Dominion Experimental Farms, has made milk production a subject of special study and experiment for many years and has embodied in this bulletin the most valuable of the information obtained. As suggested by the subtitle (Crop Rotations, Dairy Barns, Breeding Dairy Cattle, Feeding, Care and Management of Milk Cows), the subject of milk production is not as simple as might appear at first glance. A maximum output of milk is dependent upon many factors and the author's endeavor has been to treat of these as fully, clearly and simply as possible, so that the bulletin may be of value to the general farming community, both in aiding them to make a start along correct lines and also as a

work of reference on those dairying problems which occur from time to time.

The subject of milk production is treated under the following heads:—

- (1) The farm chosen, the rotations followed and the crops grown.
- (2) The breed of cattle selected and the breeding methods followed.
- (3) Stables and care and management of the herd.
- (4) Milking and care of milk.
- (5) Feeding methods and rations.

In Milking and Care of Milk will be found advice on the economical and cleanly handling of that product, including care of utensils, milking machines, brushing, washing and clipping of cattle, etc.

Under Feeding Methods and Rations the whole subject of feeding the milk cow is taken up, what, when and how to feed being fully discussed. Many farmers in all parts of Canada were communicated with as to their feeding methods. The replies of a large number

are included in the bulletin and also the author gives some rations which he suggests as being suitable for different parts of the Dominion.

The results of twenty years' experimental work with dairy cattle at the Central Farm follows. These will be found to illustrate and justify the conclusions drawn in former sections. The publication is profusely illustrated with diagrams and plates and is provided with a very complete index. Those who desire a copy may obtain it by addressing the Publications Branch, Department of Agriculture, Ottawa.

SMUT DISEASES OF CULTIVATED PLANTS

It is estimated by the Director of the Experimental Farms that smut diseases of cultivated plants cause an annual loss in Canada of at least fifteen million dollars. If these diseases were properly understood and the best known remedies applied at proper times much of this serious injury would be prevented.

In order to teach crop growers how best to protect their fields against damage by smuts there has been issued by the Department of Agriculture a comprehensive, plainly written treatise

which is issued as bulletin No. 73, of the Experimental Farms. The author, Mr. H. T. Gussow, Dominion Botanist, has gone into the subject very thoroughly, not only describing the smuts, in their various stages, that affect wheat, barley, oats, corn and millet, but attention is given to methods of infection as well as the preventive measures and curative remedies that have been found useful. The text, which occupies about fifty pages, is much helped by numerous illustrations. This work is being sent out free to all who apply for it to the Publications Branch of the Department of Agriculture at Ottawa.

The Grain Growers' Guide of Western Canada has asked the Manufacturers' Association, now in convention, if it will join hands in urging the Government to reduce the tariff on British imports to half that charged on foreign imports, to be followed by free trade with Great Britain in four years. Now for a masterly display of deep and abiding patriotism — for the protective tariff.—Montreal Witness, Sept. 16.

An envious man waxeth lean with the fatness of his neighbors.—Socrates.

ALLAN LINE

Royal Mail Steamers

FALL AND WINTER SAILINGS FROM MONTREAL

LIVERPOOL		GLASGOW		HAVRE-LONDON	
Tunisian . . .	Oct. 14	Pretorian . . .	Oct. 18	Corinthian . . .	Oct. 12
Victorian . . .	Oct. 21	Gramplan . . .	Oct. 23	Sicilian . . .	Oct. 19
Corsican . . .	Oct. 28	Scandinavian . . .	Nov. 1	Ionian . . .	Oct. 26
Virginian . . .	Nov. 4	Hesperian . . .	Nov. 6	Pomeranian . . .	Nov. 2
Tunisian . . .	Nov. 11	Pretorian . . .	Nov. 15	Scotian . . .	Nov. 9
Victorian . . .	Nov. 18	Gramplan . . .	Nov. 20	Corinthian . . .	Nov. 16
Corsican . . .	Nov. 25			Sicilian . . .	Nov. 23

CHRISTMAS SAILINGS

ST. JOHN-LIVERPOOL		PORTLAND-GLASGOW	
Virginian . . .	Dec. 6	Scandinavian . . .	Dec. 4
Tunisian . . .	Dec. 10	Ionian . . .	Dec. 13
Victorian . . .	Dec. 20	BOSTON-GLASGOW	
		Hesperian . . .	Dec. 11

NOTE SAILING OF NEW

R. M. S. ALSATIAN

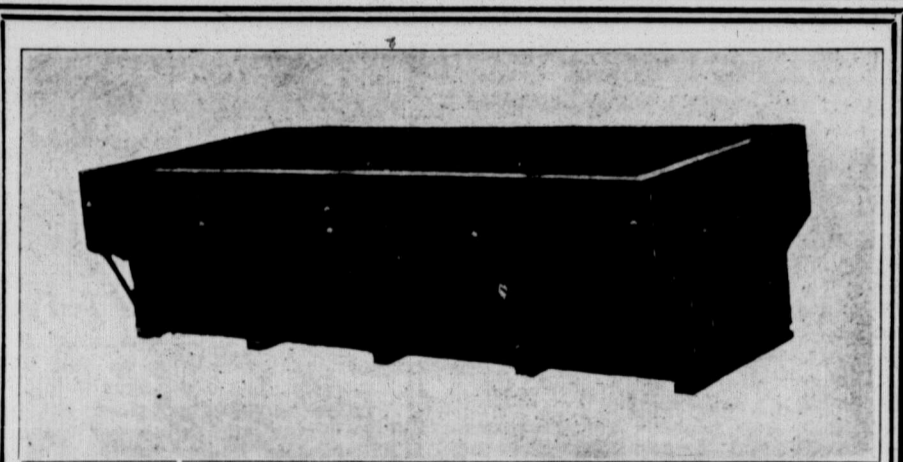
(18,000 Tons)

FROM ST. JOHN DIRECT, JANUARY 3, 1914

Largest and finest steamer ever built for the Canadian trade. Numerous one-berth rooms. Gymnasium. Verandah cafe, Orchestra, Elevators, and all modern improvements.

RESERVE BERTHS EARLY

For rates, reservation of berths, etc., apply any railway agent, or W. R. ALLAN.
General Northwestern Agent, Winnipeg.



The Strongest FLAX-TIGHT GRAIN TANK made, with Self-Locking Gate. Sold direct to you. We pay the freight to your station

Price of 125 Bushel Capacity - - - - - \$30.00
Price of 150 Bushel Capacity - - - - - \$31.00

These prices are for Cash with Order. Only best kiln-dried Fir lumber used. Our Grain Tanks are Guaranteed. Manufactured and sold only by

The Farmers' Machine Company Limited

WATROUS :: SASK.