

# 29 Yrs Sticks in Your Eye

**THE BEAUTY and convenience of Sharples Tubular Cream Separators stick in your eye.** You simply can't forget them.

The supply can is so steady and easy to fill. It need never be moved to take the Tubular apart. All separators, except the Sharples, have cans set right above the bowls—such cans must be lifted off before the machine can be taken apart, which is doubly unhandy if the can happens to be full.

The few, simple running parts are all enclosed in a dust proof case in the head of the Tubular. They are entirely self oiling, needing only a spoonful of oil poured right into the gear case once a week. The gear case cap lifts off without unfastening anything. This makes Tubulars very neat. **Your wife will appreciate that,** and also the light, quickly washed dairy Tubular bowl which contains one tiny, instantly removable piece, very much like a napkin ring in shape and size.



The light Tubular bowl, hung from a single frictionless ball bearing, and driven by self oiling gears makes Tubulars so light running that the medium size can be turned by one who is seated.

Tubulars run remarkably easy because they



The top of the supply can, on the largest dairy Tubular, is only 3 feet 3 inches above the floor. Easy to fill, steady, need never be moved to take out the bowl. An exclusive Tubular advantage.

are built remarkably well and in the only right way. They skim twice as clean because they develop twice as much skimming force.

Avoid wishing you had bought a Tubular by buying a Tubular.

The manufacture of Tubulars is one of Canada's leading industries. 1908 sales way ahead of 1907—out of sight of most, if not all, competitors combined. 1909 is doing still better. Write for Catalog 193



To oil the Tubular, simply pour a spoonful of oil into the gear case once a week. The gear wheels throw this over themselves, and the ball bearing supporting the bowl.

**The Sharples Separator Co.**  
Toronto, Ont. Winnipeg, Man.

## Why This MOWER Beats Any Other ON EARTH



WHETHER you think of buying a mower now or might buy one ten years from now, we want to tell you how good a mower we've got for you. The Dain Vertical Lift Mower is the smoothest working, lightest running, easiest pulling machine on the market. You can thoroughly understand it at once and see its vast advantages of build. The high drive wheels, for instance, insure lightest possible draft and enormously increased traction. The cutting apparatus, carried on the wheels, by means of an adjustable coil spring, uses every bit of power, reduces useless friction and lessens pull for the team.

The long pitman gives a smooth, strong, unerring stroke. The gearing is all on the left wheel where it offsets the weight of the cutting bar, altogether doing away with side draft. Many other desirable, exclusive features help make the

## Dain Vertical Lift MOWER

easiest to run, surest in results, most perfect in construction, most durable, altogether most satisfactory and so simple a boy can handle it easily.

Built with utmost care, entirely of selected materials, withstands hardest wear and tear and sticks right to business all the time. The name "DAIN" on a Mower or any other hay tool is your guarantee of highest excellence. It is backed up by the perfected result of a quarter century's successful experience. Ask your dealer about this Dain Vertical Lift Mower, or write us for interesting descriptive booklet.

Dain Manufacturing Co.

Mention this paper ♦ Preston, Ont.

## CHURCH BELLS CHIMES AND PEALS

MEMORIAL BELLS A SPECIALTY

FULLY WARRANTED

McSHANE BELL FOUNDRY CO.,

BALTIMORE, Md., U. S. A.

Established 1866



# Ramsay's Paints

Dependable paint—that's Ramsay's.

You know just what you are getting when you buy Ramsay's Paints—the Canadian standard. Used for 67 years by house painters and home owners.

Every can fully guaranteed by a firm that has been making reliable paints since 1842.

60 colors—ready to use—for everything you want to paint.

Get a color card at your dealer's and write us for booklet showing how some men have made their homes beautiful with Ramsay's Paints.

A. RAMSAY & SON CO. - MONTREAL.

Paint Makers since 1842.

87

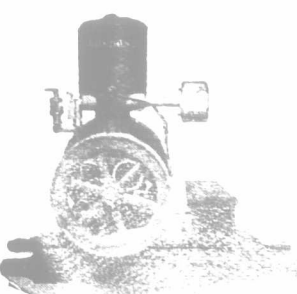
No delicate, complicated parts to get out of order. Simple, reliable, and economical.

## "LONDON" GAS OR GASOLINE ENGINES

2 1/2 and 4 1/2 horse power.

Catalogue 14 G. for the asking.

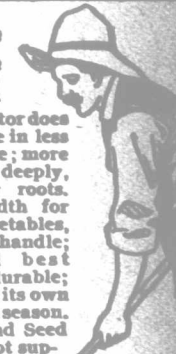
Scott Machine Co., Ltd., London, Can.



BEST RESULT OBTAINED FROM "ADVOCATE" ADVERTISEMENTS.

## Does Twice the Work of a Hoe -10 Days Trial

"Buco" Hand Cultivator does twice the work of Hoe in less time, less labor, trouble; more thoroughness. Digs deeply, extracting weeds by roots. Adjusted to any width for working around vegetables, etc. 4 1/2 ft. hard-wood handle; thoroughly tempered beat steel Teeth. Simple, durable; lasts a lifetime; saves its own price many times first season. Sold by Hardware and Seed Stores. If dealer cannot supply you, send regular price, \$1.50, and "Buco" will be promptly sent you. Money refunded after 10 days trial if it is not satisfactory.



**"Buco" Hand Cultivator**  
Bailey-Underwood Company, Ltd.  
New Glasgow, N.S., Canada.

Write for Samples and Booklet of

## REX ROOFING

and see for yourself

J. A. & W. BIRD & CO.  
20 India Street, Boston, Mass.

Canadian Office:  
29 Common Street  
Montreal

GOES LIKE SIXTY BELLS LIKE SIXTY \$65

SELLS FOR \$100

## GILSON ENGINE

For Pumping, Cows, Separators, Churns, etc.

GILSON MFG. CO. LTD. 150 York St., Quebec, Can.