

# A Common-Sense Talk On Manure Spreaders



**I. H. C. Corn King and Cloverleaf Spreaders**

**T**HERE'S no doubt that the right kind of manure spreader is a good thing for you to have. It is probably true that there is no other farm machine that, if rightly chosen, is as valuable to the farmer. If manure is spread properly and at the right time, its money value far exceeds what you're apt to think.

But when you buy a manure spreader have a care. There are many of them on the market, and many with various "special features"—fancy affairs that do them more harm than good.

When you buy a spreader look out for these things—and avoid them. What is chiefly to be desired is *strength* and *simplicity of construction*.

Strength is essential because a manure spreader has to carry a heavy load and the rear end—the *machine* end—has hard work to do.

Simplicity of construction lessens the chance of the machine getting out of order and gives *light draft*. You know there are a good many manure spreaders that don't get out of the shed after the first year. They are too troublesome; causing much delay.

are strong and simple. The frame is carefully selected, well seasoned lumber, and is strengthened by heavy cross sills and truss rods. They have steel wheels with staggered spokes, and both hind wheels have clutches. The box is made of selected stock and is securely fastened to the frame by heavy steel cleats. Corners are re-enforced with steel plates. Everything is of the very best.

Both of the rear wheels are drivers, and insure plenty of power. A large sprocket with heavy chain drive transmits the power to the cylinder. The cylinder is large and strong, and the square teeth (extra long) are made of the best high carbon steel.

The power for driving the apron is applied on both sides, giving an even movement and making binding impossible. The rollers are attached to the under side of the slats instead of to the frame.

The vibrating rake is a most important feature, and is found only on Corn King and Cloverleaf spreaders. It levels the load and brings the manure squarely up to the cylinder—a thing which is absolutely essential to

proper spreading. The teeth on the vibrating rake are held in place by coiled steel springs so they never break but adjust themselves to the size of the load.

And as a result of simple construction, the operation is simple. Any one who can drive a wagon can operate an I. H. C. spreader, for one lever does it all. There are ten feeds, ranging from ten to thirty loads per acre. The apron stops of its own accord when the load is all fed out. By reversing the lever it returns and again stops when back in position. No need to watch it at all.

These are some of the reasons why you should investigate I. H. C. Corn King and Cloverleaf spreaders before you buy. There are many other good points about them that are explained in our catalogues. There are two kinds—Cloverleaf, an Endless Apron machine, and Corn King, a Return Apron machine; each made in three sizes.

Call on our Local Agent or write nearest branch house for catalogue.  
CANADIAN BRANCHES: Calgary, London, Montreal, Ottawa, Regina, St. John, Toronto, Winnipeg.  
**INTERNATIONAL HARVESTER COMPANY OF AMERICA, CHICAGO, U. S. A.**  
(INCORPORATED)

**Noroton Beauty.**



## The Best All-Round Potato

**NEW NOROTON BEAUTY.**—It is a lineal descendant of the famous Peach-Blow, being a seedling from a seedling of that variety. We may summarize its merits as follows: It is the earliest potato ever grown. It is by far the most productive extra early, yielding as heavily as any of the medium early sorts. It is handsomer in appearance and more uniform in size and shape than any other variety. Its table quality is superb, and it keeps longer than any other sort, early or late. It is the best all-round potato in existence. We have grown this variety for two seasons, and highly recommend it. Price: 1 lb., 20c.; 5 lbs., 85c.; postpaid to Canadian points; peck, 75c.; 1 bush., \$1.20; 2 bush., \$2.10; bag, \$3.00, here. Shipment as soon as safe in spring. Order early.

NOW READY, our handsomely-illustrated 96-page catalogue of Seeds, Plants, Bulbs, Poultry Supplies, Garden Implements, etc., free.

Send for it to

**JOHN A. BRUCE & CO.**

Hamilton, Ontario.

Established 1850.



## THE DUNN HOLLOW CONCRETE BLOCK MACHINE.

Third year in the market, and every machine sold doing good work. Simple in construction and operation. Suitable for block-making for a single building, or for a regular block making business. A moderate priced machine; compact and portable. No power required. Has suited every purchaser, and will please you. Western shipments made from our Winnipeg warehouse.

Write us for catalogue.

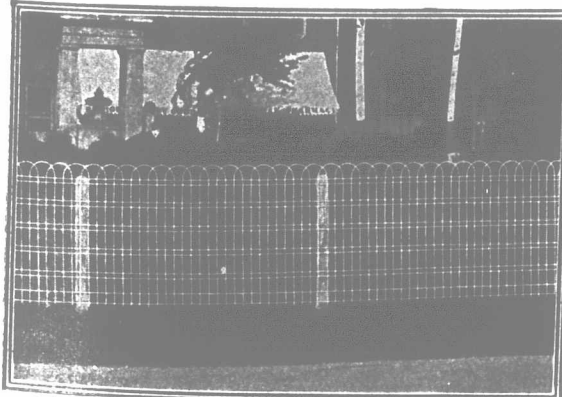


Address Dept. O. THE JAS. STEWART MFG. CO., Ltd., Woodstock, Ont.

## PAGE ACME White Fences

Any height to 8 ft. Any length you say. From 16 cents a foot. Gates to match, from \$2.25. Last longer. Easy to put up. Get booklet.

**PAGE WIRE FENCE CO., Limited**  
Walkerville - Toronto - Montreal  
St. John - Winnipeg



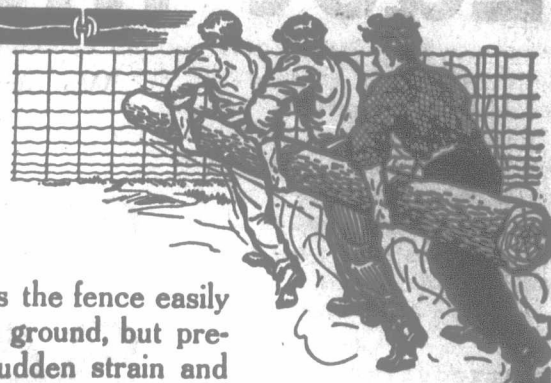
## Practical Elasticity

"Maritime" wire fences are made of a coil-spring wire that holds the coil shape and not only makes the fence easily adaptable to rough, holey, ground, but prevents the possibility of sudden strain and breakage as well.

"Maritime" wire fences need few posts; twenty or thirty feet apart is near enough. Every post saved reduces the cost.

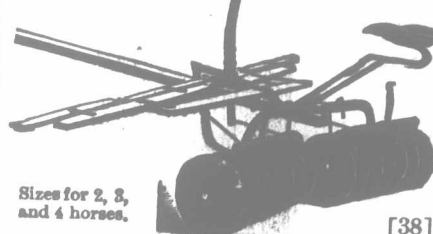
Moreover a long panel between posts enables the fence to better encounter any sudden shock.

Write for catalogue and price list.  
**NEW BRUNSWICK WIRE FENCE CO**  
11 MONCTON, N.B. Limited.



**MARITIME WIRE FENCE**

## THE BISSELL



(None genuine without this name). This is our specialty. We've been at it many years and going to keep on longer. For quality of work and amount of work, this Disk is famous throughout all Canada. Construction is simple, compact, strong, with immense capacity. Pulverizes and makes a fine seed bed. Light of Draft. No Neck Weight. Sold by our Agents. Manufactured by.

**T. E. BISSELL, ELORA, ONT.**  
Write for Booklet "W"

## STOCK MEN



Advertise your fancy stock by means of first-class

**DRAWINGS**

AND

**ENGRAVINGS**

Send us your photos, and our stock artist will bring out the points.

**THE TORONTO ENGRAVING COMPANY LIMITED**  
TORONTO - - - CANADA.  
DESIGNERS, ILLUSTRATORS, ENGRAVERS

## SASKATCHEWAN LANDS

Wild and improved, in one of the best districts in the West. Write:

**J. F. MIDDLEMISS,**  
Wolsley, Sask.

## Western Canada Land Co.

Large number of improved farms in Brandon district; also in all parts of Manitoba, Saskatchewan and Alberta. Prices right. Terms easy. Address: Box 581, 38 Ninth Street, Brandon, Man.