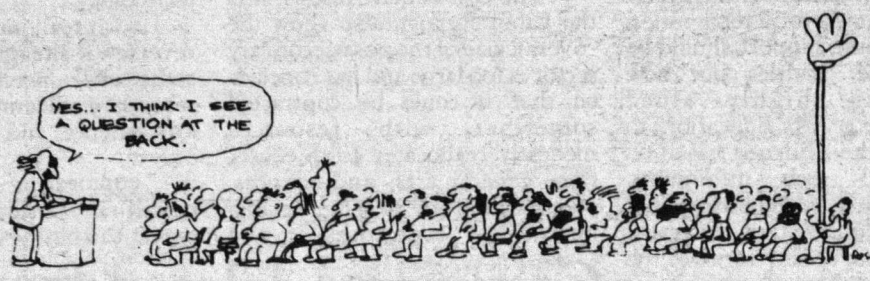


# Survival in the 80's

## Faculties caught by Newton's Law

Below is a short summary of the results of a survey conducted by Liz Lunney (VP Academic) for the Anti Cutbacks Team (ACT) Committee. Questionnaires were sent to the Deans of the faculties, asking about the effects of reduced funding. Highlighted are the more severe effects within the faculties.



### Faculty of Agriculture and Forestry

A quota was forced upon the faculty four years ago. Off campus research facilities are the worst hit now. A 25-50 per cent increase in equipment costs was seen, but the provincial operating grant increased only 13.1 per cent in 1980-81.

### Faculty of Arts

Since the government does not recognize the service demand problem, it is also reluctant to support the concept of a liberal education. Therefore, the faculty must struggle to support its existing programs and limit its expansion into new areas.

### Department of Classics

The sharpest increase in its introductory level courses has created an average lecture size increase of 46 per cent.

### Romance Languages

This department has problems typical of many of the language departments. Romance Languages cut use of the Language Labs 16 per cent (almost 16 full-course equivalents). A reduced selection of literature courses forces some students to enroll in classes they have no wish to enroll in.

As have many departments, Romance Languages has reduced its permanent staff and now relies more on non-permanent staff (sessionals and graduate teaching assistants) to carry the teaching load. However, the cost of experienced sessional staff and uncertain funding is creating a touchy situation.

### Faculty of Business Administration and Commerce

A number of academic positions are not filled for three reasons. First, working conditions-teaching loads have increased to levels no longer competitive with comparable institutions. Second, the University of Alberta can not afford competitive salaries. Third, there is a lack of graduates for teaching. There are currently five staff vacancies for every available position.

### Faculty of Dentistry

Reductions in funding have reached the level of affecting community services. The Dental Clinic is operated through education dollars (unlike Medicine which gets funding from the Department of Health Services).

Students may soon find it necessary to purchase their own consummable supplies for the clinic to function properly.

"When the effects of inadequate funding are felt in jobs and in the community, it becomes a social problem," says Lunney.

### Faculty of Education

Service area funding is a severe factor. Library hours are cut and especially affect student teachers who must make use of the library off hours.

### Faculty of Engineering

Most good Engineering schools have a student/staff ratio of 11/1. The student/staff ratio stood at 16/1 here at the U of A in 1979-80. Certain introductory courses have 400 students.

### Faculty of Home Economics

Food services courses are inadequate and may result in the loss of accreditation to the dietary program. The loss of accreditation programs because of inadequate programs is a severe danger in many other faculties, including Dentistry and Pharmacy.

### Faculty of Library Science

The ability to maintain professional contacts in the prairie provinces has been hurt by substantial cuts in the travel budget.

### Faculty of Medicine

To achieve an adequate level of competency, over 100 staff are needed. The current student/staff ratio is too high.

"We have the highest student/staff ratio in the country, says Lunney.

### Faculty of Nursing

A teaching program relies heavily upon availability of periodicals. Nursing has been hit by a reduction in its discretionary acquisitions budget for the library.

### Faculty of Pharmacy

The Clinical Pharmacy program has been severely hit by a funding shortage.

### Faculty of Rehabilitation Medicine

Space allocations are currently inadequate. Much of the equipment necessary for operation is outmoded and needs to be updated.

### Faculty of Science

Another faculty that has a heavy service demand. Operating budgets are strained for maintenance and daily operation of equipment. Replacement and maintenance funds are inadequate.

### Department of Computing Science

Increased enrolments, unavailability of staff for lab instruction, and a shortage of terminals have cut lab periods from three hours to one. A heavy student/staff ratio increase is typical of all departments in the faculty.

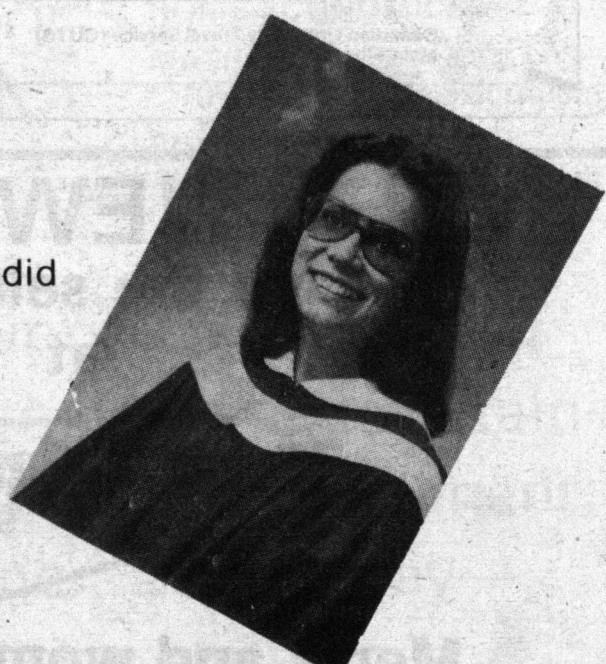
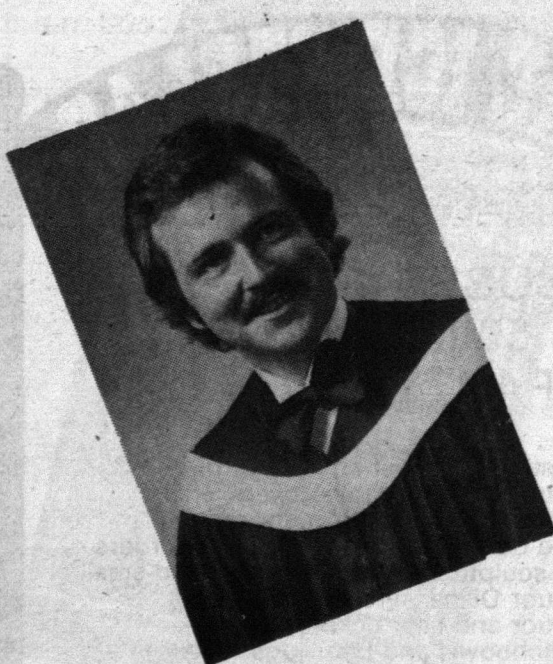
### Linguistics

Two important undergraduate courses had to be dropped because of a lack of staff.

### Library

Over the past decade university libraries have been severely affected by reduced funding, inflation, and unfavorable exchange rates. The General Faculties Council (GFC) Library Committee Report for 1979-80 estimated a 50 per cent reduction of purchasing power in the library budget. This same budget seriously effects the availability of study space and library hours.

# Goertz Studios Ltd. CAMPUS PHOTOGRAPHER



All our work is processed in our own Modern COLOR LABORATORIES. Your finished portraits will be ready for delivery within days after your proofs are returned.

### A Complete Photography Service

Class Layouts, Passports, Children, Candid Weddings, Portraits.

To the discriminating Student who knows and appreciates fine photography ... we are pleased to offer many combinations on package deals at student prices ... because we hope to become your Photographer now ... and on every memorable occasion.

Goertz Studios Ltd.

NOW LOCATED

# 9012 HUB

on Campus since 1947

We invite your comparison ... GOERTZ STUDIOS Campus Photographers for more than 30 years - Our policy of meticulous attention to every detail in making your portrait.

Phone 433-8244