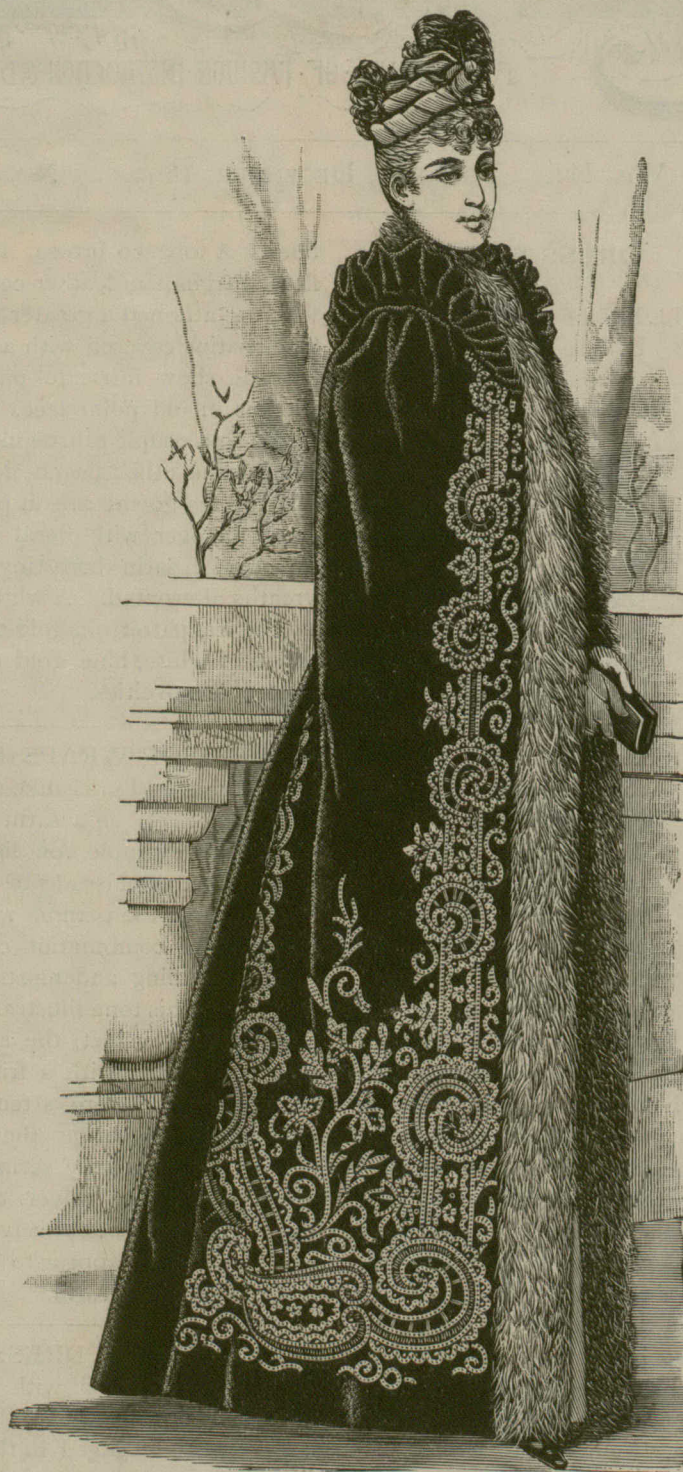


a pink silk draped with black Russian net, covered with lozenges in black velvet. This at the foot was caught up in festoons, as you see some of the fashionable window blinds. Another black and pink had the bodice differently trimmed with horizontal bands of galoon. One of the most lovely of the evening gowns was a tilleul brocade, the front draped with crepé de chene of the same tint, but embroidered all over in silk, with tiny florets. The bodice had the silk arranged to cross over chiffon, while on the shoulder was a large frill of violet velvet. The dress was laced at the back, where were coat basques, opening to show the satin of the same exquisite tint. A green velvet skirt, made perfectly plain, had a belt of green embroidery coming well under the arms; the sleeves on the upper portions were chiffon. Other evening gowns are in pink, blue, or white Spanish lace, with velvet flowers in a deeper shade, or, what is still better, black velvet flowers on the colored lace, or else vieux rose lace with garnet velvet flowers. These are all made up over silk the same color as the lace; the bodices are open *en cœur* front and back with crossed drapery; and the little pierrot ruff is made of silk tulle or feathers to match the color of the dress.

**B**ORDERED MATERIALS have been brought out in quite a new guise,

and in such a fashion that the adornments at the edge serve to border the hem of the gown as well as the bodice and sleeves. But to describe some of them: A reseda twill had very narrow lines of tiny

pink brocade, and picots of the same tone at the extreme edge. Another, in mousse colored diagonal, had three of the same tiny striped lines of brown velvet, divided by motifs in wedge-shaped brocade. A blue ground was nearly covered by graduated black stripes, which, instead of being arranged perpendicularly, were placed horizontally, the effect being deepened at the foot by black silk flounces, with French hems, which have come back to us. Snow-flaked tweeds are fashionable, and, for cheaper gowns, the speckled wool serges, which, to judge from their wiry fibre, have worsted in them. They also come with borders of similar character. Many woollen suitings are imported with borders of embroidery and deep embroidered points for the top of the sleeves with ostrich plumes set in the embroidery. Other borders are set with a band of otter or uncurled astrakhan running through the embroidery or as a straight border below embroidery. A wide network of knotted silk cords in the mixed colors of the suiting is another border that ends in a close fringe and is ornamented by a band of otter running over it.



3277

Figure 1.—Ladies' Cloak.

Cut in five sizes, 32 to 40 inches bust measure.  
Price 30 cents any size.

For full description see page 5.