

uses mentioned. The porch might also be glassed in for winter use, because an outside kitchen is almost as desirable in winter as in summer. Or, if it were not needed as an out-

ing any difference to the plan as a whole.

The entrance door opens into a small entry, screened by heavy portieres from the living room, so that

der. The back of the seat would be on a level or a little below the top of the table so that the two seem al-

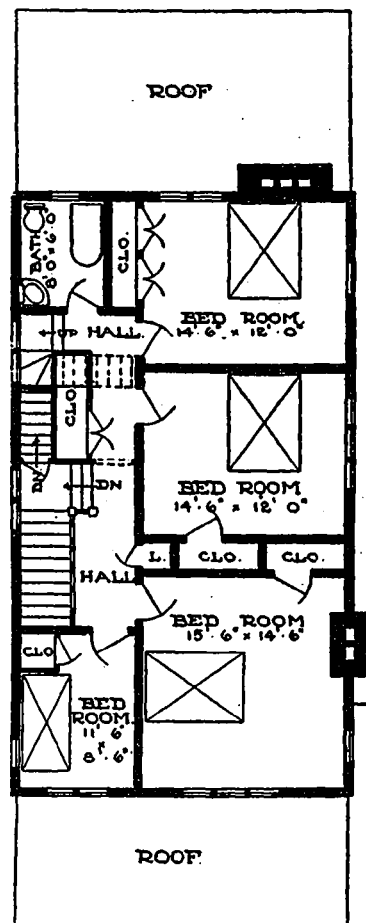


Design No. 3.—A plaster house, suitable for ordinary lot in town or village, or in the open country. It has plastered stucco walls, and its foundation, porch piers and chimneys are of field-stone. It is also adapted to shingle or clapboard walls.

side kitchen, it could be used with advantage as a cool-room or milk room. The house is so designed that this outside kitchen may be added to it or omitted, as desired, without mak-

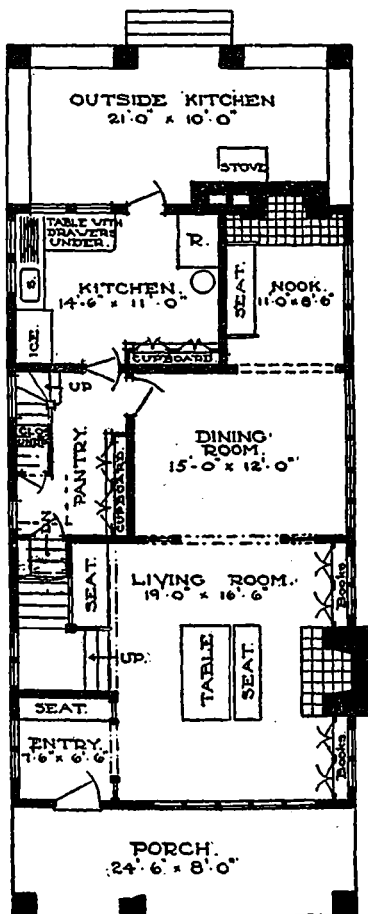
no draught from the front door is felt inside. On the outside wall of the living room is the arrangement of fireplace and bookcases, as shown in the detail illustration. The chimney-piece is built of field stone laid up in black cement and runs clear to the ceiling, preserving its massive square form to the top. A bookcase is built in on either side and above each one of these are two small double-hung windows. The tops of the bookcases serve admirably as shelves for plants.

In the center of the room is a large table with a settle of exactly the same length placed back to it and facing the fire, so that it affords an ideal ar-

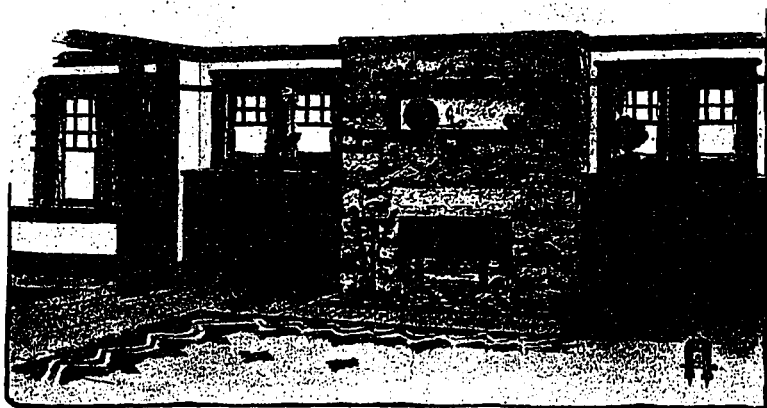


First floor plan of Design No. 3.

most to be one piece of furniture. This is usually found to be a pleasant and comfortable arrangement, and



Ground floor plan of Design No. 3.



Fireplace and bookcases in living room of Design No. 3. This fireplace is built of field-stone, laid in black cement, and runs clear to the ceiling. Note the bookcases built in on either side of the fireplace, above which are two small double-hung windows.

angement for anyone who wishes to sit facing the fire with the light from a reading lamp falling over the shoul-

whatever other chairs or built-in seats there may be in the room, this fireside seat is sure to be the favorite.