

Leading Manufacturers.

The Simonds Saw Our Circular Saws

MANUFACTURED BY THE

SIMONDS PATENTED PROCESS,

Having given such general satisfaction, owing to their uniformity of temper, we have at a great expense applied the principle to the tempering of Cross-cut Saws, having frequently been asked to do so; and hereafter our Cross-cut Saws will be Etched and known as such. Those who like a nicely tempered Saw will do well to give them a trial.

Ask your Hardware Merchant for the SIMONDS SAW, and see that it is etched as such.

R. H. SMITH & CO.,
ST. CATHARINES, Ont.

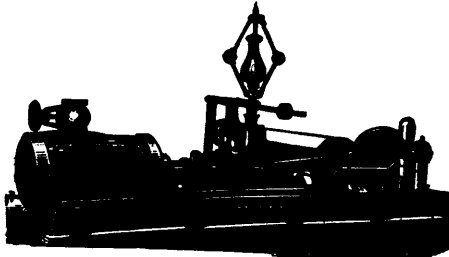
SOLE MANUFACTURERS for the Dominion of Canada.

JOHN PERKINS,
Manufacturer of
ENGINES, BOILERS,
Shaftings, Pulleys, Etc.
153 & 155 Front St. East,
TORONTO.

McKECHNIE & BERTRAM,
Canada Tool Works,
DUNDAS, ONTARIO.

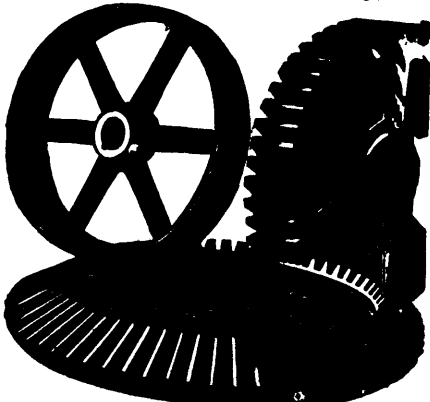
Supply complete outfits of Machinery for Railway Machine Shops, Locomotive Builders, Car Builders, Implement Manufacturers, Planing Factories, etc. CONTRACTS taken and fulfilled at shortest notice. Tenders given, and Price Lists and Catalogues furnished on application.

J. H. KILLEY & CO.,
HAMILTON, ONT.



Builders of the most Simple, Economical and Modern of all CUT-OFF ENGINES.
C. H. No. 1 Iron and Steel Boilers of all sizes in stock ready for delivery!

WM. KENNEDY & SONS,
OWEN SOUND,
MANUFACTURERS OF
Steam Engines,
Wood Work Machinery, &c.



Propeller Wheels, all sizes. Locomotive Water Wheels and Mill Machinery a specialty.

Leading Manufacturers.

COBOURG CAR WORKS.

ALL KINDS OF
RAILWAY CARS

Manufactured

At the

SHORTEST NOTICE.

Warranted to give satisfaction. Applications regarding terms may be sent to

JAMES CROSSEN,
Cobourg, Ont.

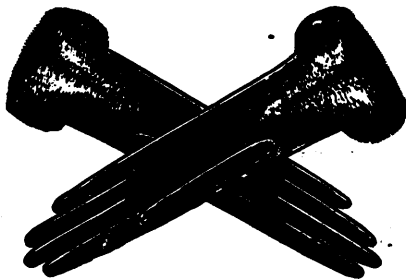
Steam Pumps.

NORTHEY & CO.,

TORONTO.

—SEND FOR CIRCULAR.—

WM. BARBER & BROS.
PAPERMAKERS,
GEORGETOWN, - - ONT
—News, Book and Fine Papers.—
JOHN B. BARBER.



JAMES HALL & CO.,
BROCKVILLE, Ont.,
Manufacturers of Gloves and Mitts,
And Dealers in Indian Moccasins.
N.B.—FINE CALF and BUCK GOODS a Specialty

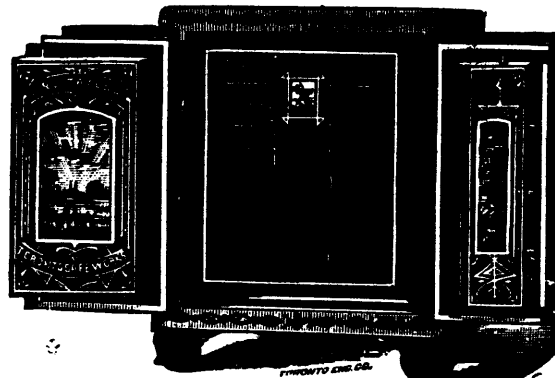
JARVIS PATENT FURNACE FOR SETTING STEAM BOILERS



Economy of Fuel, with increased capacity of steam power. The same principle as the SIMMONS' PROCESS OF MAKING STEEL, utilizes the waste gases with hot air on top of the fire. Will burn all kinds of Waste Fuel without a blast, including screenings, wet peat, wet hops, sawdust, logwood chips, slack coal, &c. Over 2,000 boilers set in this way in the United States and Canada. Send for Circular.

JAS. R. ANNETT, Agent,
110 KING ST. (P.O. Box 88), MONTREAL, QUE.
Please mention this paper.

J. & J. TAYLOR, TORONTO SAFE WORKS.



ESTABLISHED 1855.

During the past 28 years upwards of THIRTY THOUSAND of our Safes have been distributed throughout the Dominion from BRITISH COLUMBIA and MANITOBA to Newfoundland, and in the many tests they have been called upon to stand NOT ONE OF THEM has proven a failure.

Such a record is surpassed by none, if equalled by any other manufacturer on this Continent.

Leading Manufacturers.

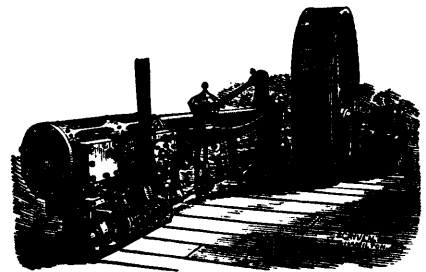
1828. Established 1828.
J. HARRIS & CO.
(Formerly Harris & Allan.)
ST. JOHN, N. B.,

New Brunswick Foundry,
Railway Car Works,
Rolling Mill.

Manufacturers of Railway Cars of every description, Chilled Car Wheels, Hammered Car Axles, Railway Fish-Plates, Hammered Shafting and Shapes, Ship's Iron Knees and Nail Plates.

SPENCERIAN PENS
These famous Steel Pens combine the essential qualities of Elasticity, durability and real Swan Quill action suited to all styles of writing.
For Sale Everywhere.

BUNTIN, BOYD & CO., Montreal.



THOS. WORSWICK & CO.,
GUELPH, ONT.,

Manufacturers of the WORSWICK "BROWN" AUTOMATIC CUT-OFF ENGINE.

For durability, accessibility of parts and economy of fuel, this engine has no equal. Boilers of Steel or Iron, made to order, Shafting, Pulleys, and Hangers furnished on short notice.