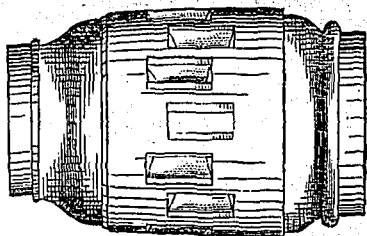


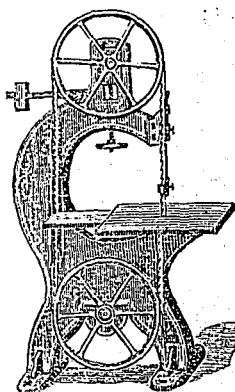
J. LAJEUNESSE,

MANUFACTURER OF
CARRIAGES.

104 Notre Dame St. Centre, Montreal.

ROSS MANUF'G CO'Y.

Fort Erie, Ont.



We manufacture a full line of Wood-Working Machinery, including Planers, Band Saws, Hand Jointers, Exhaust Fans, Shapers, Saw Tables, etc.

Every machine is warranted and guaranteed to be as represented.

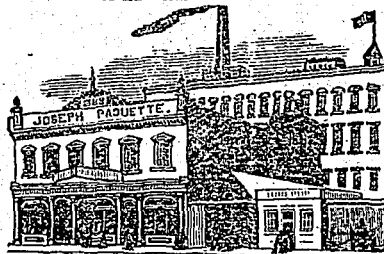
Write for Catalogue and special cash discount.

ASBESTOS. IRWIN, HOPPER & CO.,

Miners & Manuf's of ASBESTOS, Asbestos Steam Rope Packing, Asbestos Wick Packing, Asbestos Millboard Packing, Asbestos Removable Steam Pipe Covering, Asbestos Cement, Asbestos CARBID Fibre, Crude Asbestos. Samples and prices on application. 60 ST. FRANÇOIS XAVIER STREET, MONTREAL.

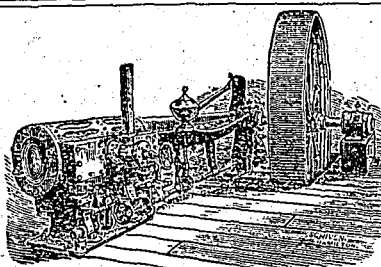
JOSEPH PAQUETTE,

Manufacturer of
Machine Knives, Grooving & Planing Knives,
Paper, Leather, Cotton, Wool and Cork Knives,
Of as Fine a Temper and Finished Edge as the best
of American Manufacture.



Also Manufacturer of Doors, Sashes, Blinds, Window Frames, Flooring, Wash-Boards, Moulds, etc.
Office, 286 to 290 Craig St., (oppos. Viger Market), Factory, 12 to 22 PERTHUS ST.

MONTREAL.

**THOS. WORSWICK,**
GUELPH, ONT.

Manufacturer of the WORSWICK "BROWN" AUTOMATIC CUT-OFF ENGINE.

For durability, accessibility of parts and economy of fuel, this engine has no equal. Boilers of Steel or Iron, made to order, Shafting, Pulleys, and Hangers furnished on short notice.

THE PERFECT PULLEY.

WATEROUS

Patent High Speed
Wrought Iron and Steel
PULLEYS.

ANY SIZE,
From 30 to 144 inches in diameter
4 inches to 48 inch Face.
SINGLE,

**DOUBLE, or
TREBLE ARMS.**

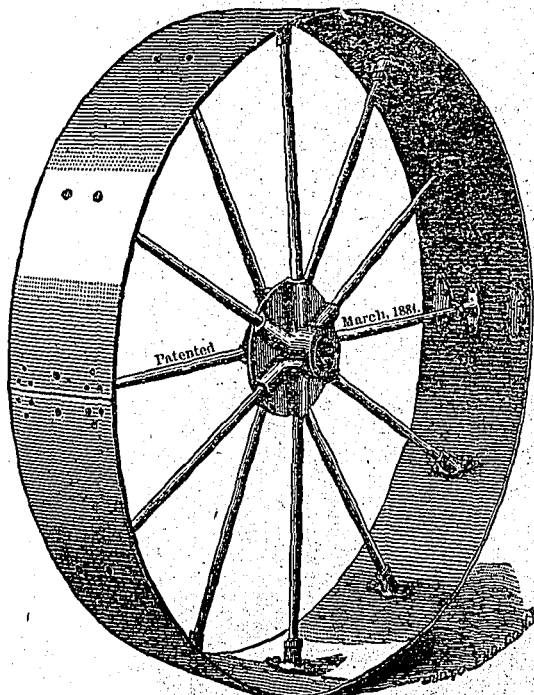
Crowning or Flat Face.
Whole or Split.
Arms can be strained any tension, at any time.
Cannot be Burst by speed or Crushed by Belt.

Lightest Pulley Made.
Saves Power; Saves Journals;
Saves Shafts.
Same price, or cheaper, than Cast Iron Pulleys.
Send for Estimates.

Large Pulleys a specialty.
TRY GANDY BELTING,

Best Main Driver Extant.
Clings to Pulleys, Runs true, No joints, unless when desired, No stretch.

Waterous Engine Works Co.
Brantford, Canada.



PORTABLE SAW MILLS.

Our Specialty.

Mention this paper.

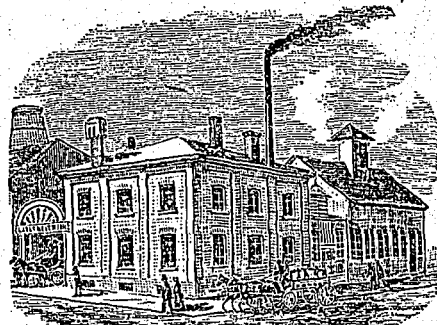
ALEX. CHISHOLM,
Produce Commission

MERCHANT,

No. 32 ST. PETER STREET, MONTREAL.
Solicits consignments of Butter, Cheese, Eggs and other Produce.
Information as to prices, &c., given cheerfully and without delay. Returns promptly made.

REFERENCES:

Messrs. J. Y. Gilmour & Co., Wholesale Dry Goods Merchants, Montreal.
Adam Darling, Esq., Wholesale Crockery Merchant Montreal.

W. CLARK,

Manufacturer of Canned Meats and Poultry, Cured Meats and Sausages,
MONTREAL.

Factory: cor. Albert and Vinet Streets.

JAMES PARK & SON,
PORK PACKERS, Toronto

L. C. BACON, ROLLED SPICED BACON,
C. C. BACON, GLASGOW BEEF HAMS,
SUGAR CURED HAMS, DRIED BEEF,

BREAKFAST BACON, SMOKED TONGUES,
MESS PORK, PICKLED TONGUES,
FAMILY or NAPPY PORK, LARD IN TUBS and PAILS.
The best brands of English Fine Dairy Salt in stock.

HAMS, BEEF TONGUE, BACON.
GEO. MCGARRY, Provision Merchant
94 Foundling St.,
South Side St. Ann's Market, MONTREAL.

BUTTER, CHEESE, EGGS, ETC

ANTHONY FORCE, Importer of Steel Rails,
Iron and Steel Bridges, Crucible Cast Steel Tires,
Railway Equipment and Engineers' Supplies, Pig Iron, Bar and Sheet Iron and Steel, Wrought and Cast Iron Pipes, Boiler Tubes, Tin Plates, Cast Steel Bells for Churches, &c., Lubricating and other Oils. Representing in Canada: Vickers, Sons & Co., Sheffield, Eng.; & W. MacLellan, George MacLellan & Co. and James Watson & Co., Glasgow, &c.; John Russell & Co., Walsall, Manchester Oil Co., N.Y. Office: 76 ST. PETER STREET, Warehouse: 225 Wellington St., **Montreal.**

Professional Cards.

HUTCHINSON & STEELE,
ARCHITECTS.
Designs and specifications furnished for public and private buildings, factories, &c., &c.
181 St. James Street,
MONTREAL.

J. W. & E. C. HOPKINS,
Architects & Valuers
OF REAL ESTATE. Montreal.
Designs for Buildings of every description made and Works superintended. Real Estate valued