

DRAUGHTS-CHECKERS

All communications to this department should be addressed directly to the Checker Editor, W. Forsyth, 36 Grafton Street.

NEWS.

The New York *Turf Field and Farm* of July 31st announces the retirement of its veteran checker editor, Mr. Dunlap, and the discontinuance of the column after twenty five years of service. With his severance from the active world of checkers there disappears another of those whose efforts have lifted the game from obscurity to a popular, intellectual and scientific pastime, and the status to which that pastime has soared in America may be attributed in a great measure to the prominence given to it in the *Turf*, but quite as much to Mr. Dunlap's own personality. Altogether the game's history during the past three decades must always be associated with Mr. Dunlap's name. His successor will not easily be found.

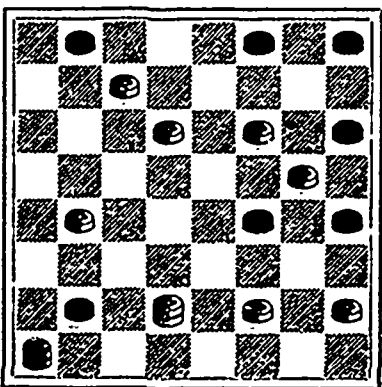
If the Checker Editor of the Liverpool, G. B., *Mercury* will accept from us a suggestion in the kindly spirit in which we tender it he will much improve, in our humble opinion, the value of his problems by following our example of inserting besides the diagrams, the numbers on which the pieces are placed. This will be of service not only to those who like our selves suffer under defective eyesight, but also to others, as the pieces in the diagrams are often so blurred that it is difficult to distinguish blacks from whites and men from kings.

SOLUTION.

PROBLEM 237.—The position was: black men 4, 7, 10, 14, 23, 24; white men 9, 12, 26, 28, 29, 30, King 19; Black to play and win.
4—8 3 10 25—27 28 19
12 3 17—21 19 10 31—24
10—15 10 17 27—31 b. wins.

PROBLEM 239.

By the late R. D. Yates of Brooklyn, N. Y.—World's champion—From the Liverpool *Mercury*.
Black men 1, 3, 4, 12, 19, 20, 25, king 29.



White men 6, 10, 11, 16, 17, 27, 29, king 26.
White to play and win.
A fine stroke.

GAME No. 116.—"Double Corner." Played recently in London, Mr. F. Teicholeit having the blacks against Mr. J. Hill with the whites.
9—14 11—16 16—19 15—18
22 17 25 22 23 7 22 15
11—16 14—17 2—11 11—18
24 19 21 14 c-26 23 24 19
8—11 10—17 17—26 16—23
25 22 a-19 16 31 23 14 9
16—20 7—10 12—16 5—14

22 18 15 11 30 25 25 22
5—9 10—15 3—8 18—25
17 13 b-11 8 18 14 27 2
1—5 4—11 9—18 drawn.
29 25 28 24 23 14

a Forcible; the right move at the right time.
b A pretty sacrifice which compels black from this point onwards to act on the defensive.
c 18 14 almost wins—*J. Hill*.

The checker editor of the Liverpool *Mercury* thinks that White might have won in the above game. We will present to the player who first sends those two wins a copy of Hill's "Synopsis of Draught Opening,"—the best 25c. checker book ever published.

**JOHNSON'S
ANDDYNE
LINIMENT**
UNLIKE ANY OTHER.
As much
FOR INTERNAL AS EXTERNAL USE.
In 1810

Originated by an Old Family Physician. Think of It. In use for more than Eighty Years, and still leads. Generations after Generations have used and blessed it. Every Traveler should have a bottle in his satchel. Every Sufferer From Rheumatism, Nervous Headache, Diphtheria, Cough, Catarrh, Bronchitis, Asthma, Cholera, Morbus, Diarrhoea, Lamezza, Soreness in Body or Limbs, Stiff Joints or Strains, will find in this old Anodyne relief and speedy cure. Should have Johnson's Anodyne Liniment in the house for Croup, Colds, Sore Throat, Tonsillitis, Colic, Cuts, Bruises, Cramps and Pains liable to occur in any family without delay. Delays may cost a life. Relieves all Summer Complaints like magic. Price, 25 cts. post-paid; 6 bottles, \$1.50. Express paid, I. S. Johnson & Co., Boston, Mass.

TRUSSES.
We carry in Stock all kinds of Spring and Elastic Trusses, Abdominal Supporters, Belts, Shoulder Braces, &c.

HEADQUARTERS FOR CRUTCHES.
Agents for **SULLEY'S HARD RUBBER TRUSSES.**
Buckley Bros.
87 & 89 BARRINGTON STREET.
201 BRUNSWICK STREET.
BUY DIRECT FROM THE MILLS.

MANITOBA FLOUR,
ALL GRADES FROM CHOICE HARD WHEAT.
Correspondence from Cash Buyers Solicited.
LEITCH BROS.
FLOUR MILLS,
OAK LAKE, MANITOBA.

WHEN IN NEED

Of Furniture, Carpets, Oilcloth, Curtains, Bedding or Housefurnishing Requisites of any description, it will be to your interest to see our stock before committing yourself to any purchases.

We have a fine range of patterns in every department and our regular list prices are as low as other houses with their discounts off, but during the month of July we will offer special inducements that we are confident will satisfy purchasers that we are willing to handle goods at closer margins than any other house in the trade, for cash or easy terms of payment by Instalments.

No trouble to show visitors all the interesting features we have to offer, whether wishing to purchase or not. Our "House Furnishing Guide" mailed to any address on application.

Nova Scotia Furnishing Co., Ltd.
SUCCESSORS TO
A. STEPHEN & SON,
Complete House Furnishers.
101 & 103 BARRINGTON ST., COR. PRINCE ST., HALIFAX, N. S.

NOVA SCOTIA PROVINCIAL
EXHIBITION
—AND—
GRAND INDUSTRIAL FAIR.
To be held in the
Royal Exhibition Building and Grounds, Halifax,
—FROM—
29TH SEPT. TO 2ND OCT., 1891, INCLUSIVE.

Grand Provincial Show of Live Stock, Agricultural and Horticultural Products, Arts and Manufactures. Active committees are at work making arrangements for special attractions, due notice of which will be given. Prize Lists and all information obtained on application at Exhibition Office, Provincial Building, Halifax.
GEORGE LAWSON, PH. D., LL. D., Honorary Secretary.
JOHN F. STAIRS, M. P., President.

Lots of people don't know that they can buy American Express Co.'s Money Orders, payable in all parts of the United States, Canada and Europe, for about half the price of P. O. Money Orders or Bank Drafts.
And that they can also buy UNDERWOOD'S 2nd STEPHEN'S INKS, All kinds of BLANK BOOKS, ENVELOPES, from 75c. per Thousand up, 1000 page LETTER BOOK, 3 Bound, for \$1 50, The Celebrated SHANNON FILE, &c., at
KNOWLES' BOOKSTORE,
Cor. George & Granville Streets.

GRIFFIN & KELTIE,
Monumental Designers and SCULPTORS.
Manufacturers and Importers of Monuments and Tablets, in Marble, New Brunswick, Scotch and Quincy Granites. Wood and Slate Mantels, Grates, Tile Hearths. Marble and Tile Floors a Specialty.
323 Barrington St., HALIFAX, N. S.

Lloyd Manufacturing & Foundry Co.
(LIMITED.)
Kentville, Nova Scotia.
MANUFACTURERS OF
LANE'S IMPROVED ROTARY SAW MILLS,
LLOYD'S SHINGLE MACHINES,
CYLINDER STAVE MILLS,
HEADING ROUNDERS,
BUZZ AND SURFACE PLANERS,
AND ALL KINDS OF SAW MILL AND MINING MACHINERY