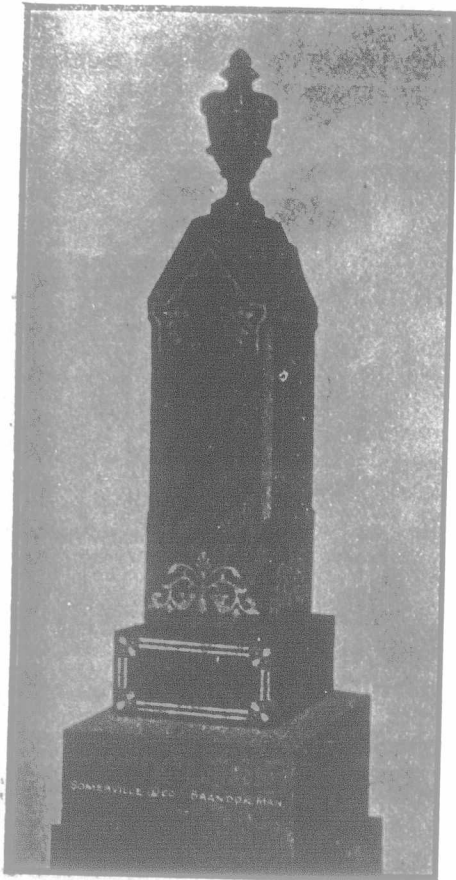


## MONUMENTS



For prices and best work, write  
The Somerville Steam Marble  
& Granite Works, - - Brandon

## The London & Lancashire Life Assurance Co.

Can meet all competition in rates on all popular plans of insurance.

Lord Strathcona and Mount Royal  
Chairman of Directors.

B. HAL BROWN,  
General Manager.

A. STEVENS BROWNE,  
Branch Manager and Supt. of  
Agencies.

L. W. HICKS,  
Assistant Branch Manager.

## The Riesberry Pump Co., Ltd.,

MANUFACTURERS OF

### High-Class Wood and Iron Pumps

We make only the best. Some of our Pumps have been in use twenty years, and are still working.

Ask your dealer for Riesberry Pumps, or write direct to us.

BOX 544 BRANDON, MAN.  
Factory, corner of 6th St. & Pacific Ave.

## SELECT FARMS IN LOWER FRASER VALLEY

British Columbia's richest farming district. I publish a catalogue of the best farms in the Valley. Send for one (it will be sent to anyone interested in the looking for a chance to present conditions) to

T. R. PEARSON

NEW WESTMINSTER - BRITISH COLUMBIA

## FULL GOVERNMENT DEPOSIT

Licensed Under  
"The Manitoba Insurance Act"

Registered in  
The Northwest Territories

Agents Wanted  
In Districts where we  
Are not Already Represented

**The Central Canada Insurance Co'y.**

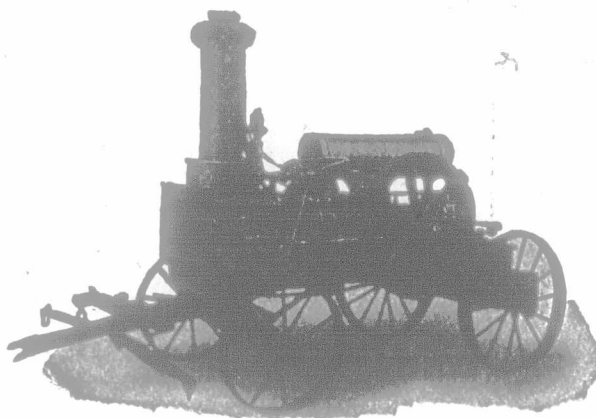
All Classes of Property  
Insured Against Loss from  
Fire or Lightning.

The only Company in Western Canada making  
a Specialty of Insuring Pure-bred Registered Live  
Stock Against Loss from Accident or Disease.

HEAD OFFICE:  
BRANDON, MAN.

JOS. CORNELL,  
MANAGER.

## GAS AND GASOLINE



"THE FARMER'S FRIEND"

**The McLachlan Engine**

FOR ALL PURPOSES

STATIONARY  
PORTABLE  
TRACTION  
MARINE

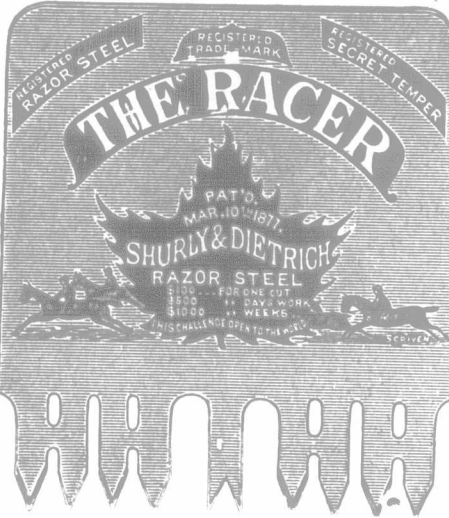
Write for catalogue, stating  
for exactly what purposes engine  
is required.

**The McLACHLAN GASOLINE ENGINE CO., Ltd.**

WESTERN AGENTS:  
W. C. WILCOX & CO., Box 818, Winnipeg, Man. ONT. TORONTO, ONT.

## THE RAZOR STEEL, SECRET TEMPER, CROSS-CUT SAW.

WE take pleasure in offering to the public a saw manufactured of the finest quality of steel, and a temper which toughens and refines the steel, gives a keener cutting edge and holds it longer than by any process known. A saw to cut fast "must hold a keen cutting edge." This secret process of temper is known and used only by ourselves. These saws are elliptic ground thin back, requiring less set than saws now made perfect taper from tooth to back. Now, we ask you, when you go to buy a Saw, to ask for the Maple Leaf, Razor Steel, Secret Temper Saw, and if you are told that some other Saw is as good, ask your merchant to let you take them both home, and try them, and keep the one you like best. Silver steel is no longer a guarantee of quality, as some of the poorest steel made is now branded silver steel. We have the sole right for the "Razor Steel" brand. It does not pay to buy a saw for one dollar less, and lose 25 cents per day in labor. Your Saw must hold a keen edge to do a large day's work. Thousands of these Saws are shipped to the United States and sold at a higher price than the best American Saws. Manufactured only by SHURLY & DIETRICH, GALT, ONT.



## British Columbia

## Far Famed Okanagan

Kelowna, B. C.

Fruit and Agricultural Lands, Residential Properties for sale in lots of a size to suit all purchasers. Prices and terms putting it within reach of all. Also town lots. Apply to

**Carruthers & Pooley**

Real Estate Agents,

KELOWNA, B. C.



## California

## Tourist Car,

NOVEMBER 7th.

WINNIPEG TO LOS ANGELES

WITHOUT CHANGE.

Via Portland and San Francisco.

**Lowest Rates.**

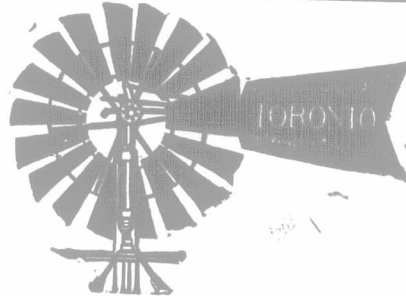
Reserve Berths at once.

Through Tourist Cars will leave  
Winnipeg every two weeks thereafter.

Full particulars from—

H. Swinford, General Agent. R. Creelman, Ticket Agent.

341 Main Street, WINNIPEG.



**SMYTH, HARDY & CO., of Calgary,**

Handle all kinds of power for  
FARM AND RANCH PURPOSES.

Write them for catalogues and prices of Canadian Airmotors and Gasoline Engines.  
Address, Box 3.

**Does** IT all depends on how frequently you have to

**Threshing** STOP through using an inferior grade of

**Pay?** OIL. All our supplies are of the best grade. Try them.

**Threshers' Supply Co.**

Box 703. 120 Lombard St., Winnipeg.

## BE A WATCHMAKER

EARN WHILE YOU LEARN. Write for our Free Book, "How to Be a Watchmaker." A postal card will do. **STONE'S SCHOOL OF WATCHMAKING**, Globe Bldg., St. Paul, Minn.

## FERGUSON & RICHARDSON

Barristers, Solicitors, etc.  
Canada Life Building,

WINNIPEG, - - - CANADA.

Solicitor for Farmer's Advocate.

R. FERGUSON, W. W. RICHARDSON

**TELEGRAPHY** Bookkeeping, Penmanship, Shorthand, Typewriting, and all business subjects thoroughly taught. Write for particulars. Catalogues free. Address WINNIPEG BUSINESS COLLEGE, cor. Portage Ave. and Fort St., Winnipeg.