

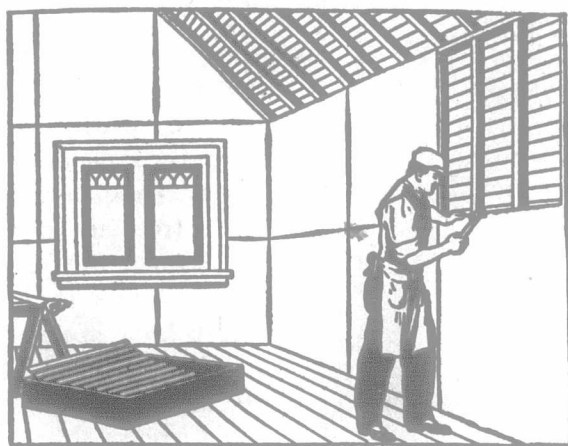
RAW FURS

If there are any Trappers or Collectors of Raw Furs that do not know us by this time, it is time now to get acquainted with us. Let us send you our price list, or better yet, make us a trial shipment and let us show you what we can do. Write for Price List and Tags Free.

TORONTO 1815
WALKERTON 1895

C. H. ROGERS
Dept. R, Walkerton, Ont.

Direct Exporter
and Manufacturer



Applying Wall Board to Studding

For a Better House--At Lower Cost--In a Month Less Time--Use

BISHOPRIC WALL BOARD AND SHEATHING

Bishopric Wall Board is made in sheets 4 x 4 feet by imbedding dressed laths, under 500 lbs. pressure, in one side of a sheet of hot Asphalt-Mastic and surfacing the other side with sized fibre-board. It comes to you in crates of 16 sheets, ready to nail on the wall, and any handy man can put it on in far less time than skilled workmen can apply lath and plaster.

Bishopric Wall Board goes on DRY, so that you can move into the house the day it is finished, without weeks of waiting for it to set and dry.

On account of the lath (and Bishopric is the only Wall Board made with lath) it makes a flat, rigid, substantial wall. On account of the patented Asphalt-Mastic it makes a moisture-proof, rat- and vermin-proof, fire-resisting wall, warm in winter and cool in summer. On account of the surface of sized fibre-board it makes a wall that is easily painted or papered.

The first cost of Bishopric Wall Board is less than that of lath and plaster—it never falls off, so costs nothing for repairs—and it saves on the fuel bills every winter.

If you are building or remodelling, write us—a post card will do—it will bring you information of real dollars-and-cents value. Address Dept. "L."

Working Plan for Bishopric Model Home:—Send six cents to cover cost of mailing to our office in Ottawa, and we will send you architectural plan for building, etc.

Bishopric Stucco Board, made specially for stucco work. Write for sample.

BISHOPRIC WALL BOARD CO., LIMITED

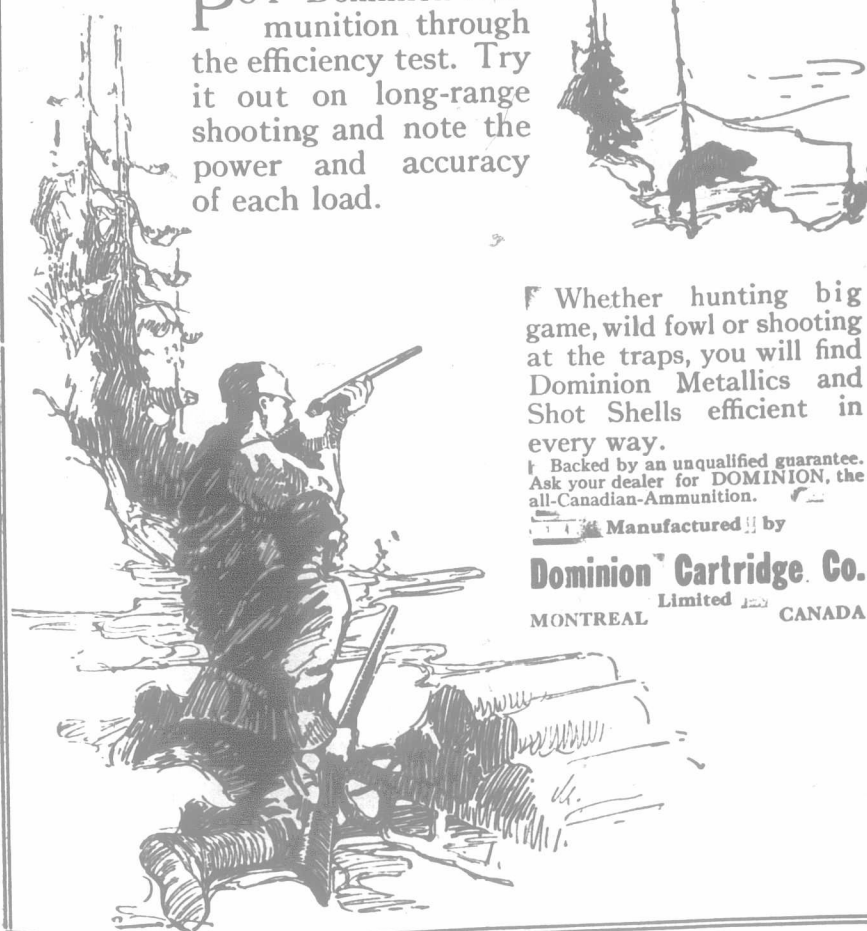
Room 44, Canada Life Building

OTTAWA, ONTARIO

Dominion Ammunition

Metallics and shot shells

PUT Dominion Ammunition through the efficiency test. Try it out on long-range shooting and note the power and accuracy of each load.

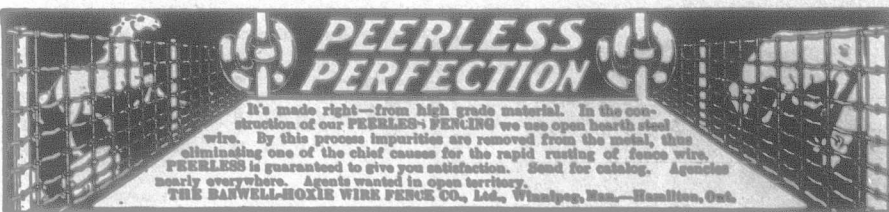


Whether hunting big game, wild fowl or shooting at the traps, you will find Dominion Metallics and Shot Shells efficient in every way.

Backed by an unqualified guarantee. Ask your dealer for DOMINION, the all-Canadian-Ammunition.

Manufactured by

Dominion Cartridge Co.
Limited CANADA
MONTREAL



Genasco

THE TRINIDAD-LAKE-ASPHALT

Ready Roofing

When you want all the buildings on the farm waterproofed to stay—cover them with this genuine asphalt roofing, applied with the Kant-leak Kleet.

Genasco gives real resistance to snow, rain, sun, wind, heat, cold, and fire; and the Kant-leak Kleet waterproofs seams without cement.

Ask your dealer for Genasco. Mineral or smooth surface. Look for the hemisphere trademark.

The Barber Asphalt Paving Company, Philadelphia

Largest producers in the world of asphalt and ready roofing

D. H. Howden & Co., Ltd., 209 York St., London, Ont.
Lewis Bros., Ltd., Montreal, Danches: Ottawa and Toronto

The Canadian Asphalt Co., Ltd. Winnipeg, Man.
Evans, Coleman & Evans, Ltd., Victoria, B. C.



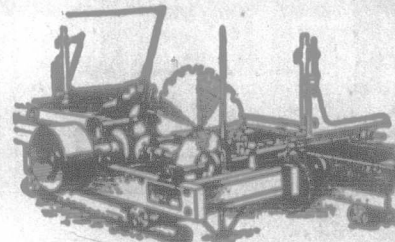
MAKE MONEY SAWING LUMBER



with an

American Saw Mill

You simply cannot afford to let those trees stand on your wood lot. Think of the crops that land would yield, if cleared. And think of the money in the trees. Every 16-foot log averaging 14 inches makes 100 feet of lumber. Ten of them make 1000 feet, worth up to \$40 per thousand. Now, size up your trees and count the dollars in them.



And look at your neighbors' trees—money in them for you, too, sawing them into lumber on shares or by the 1000. There's always a market for lumber, and prices are higher now than ever before. Hundreds of farmers are doing a paying lumbering business in the fall and winter. You can do the same, for there are wood lots around you if you haven't one yourself.

All you need to buy is an "American" Portable Saw Mill, for you have the team and wagon and probably the engine. A 6 H.P. steam or 8 H.P. gas engine with an "American" Mill will

saw up to 2500 feet of lumber per day; 10 H.P. steam or 12 H.P. gas will saw up to 5000 feet. You can run the outfit yourself, with the boys or your man to help you.

Our wide knowledge will help you start in farm lumbering. It's all in our book, "Making Money Off the Wood Lot," and in our New Catalog just off the press. We want you to have them both. Tear out the coupon now, while interested. Fill in and mail it to our nearest office.

American Saw Mill Machinery Company

Makers of

Standard Saw Mills of any size or capacity

113 Hope St., Hackettstown, New Jersey

1387 Terminal Building, New York

Chicago Seattle Savannah New Orleans

Fill in and mail this coupon to:
AMERICAN SAW MILL MACHINERY CO.
Hackettstown, N. J. (or nearest office).
Please send me free of charge and without any obligation
whatever, your Book and Catalog.
Name _____
Address _____