

"GOOD as GOLD"

are the
Policies
of the

**London Life
INSURANCE CO'Y**

Head Office: London, Canada

BEAUSE:

The assets of the Company are most carefully invested. 85% of the total assets consist of loans on first mortgages upon which form of investment the Company has incurred no losses in a quarter of a century. Bonds Stocks and Debentures, are carried at a figure much below market value.

Ask for pamphlet "Reasons Why"

**Put T-A Wheels
on
Your Wagons**

These Wide-Tire Steel Wheels are so constructed that they roll smoothly over the roughest roads, without tiring your horses. And they are absolutely accident-proof—yet cheaper than ordinary, wooden wheels.

**T-A Wide-Tire Steel Wheels
& Handy Farm Wagons**

Our Handy Farm Wagons are built low—making them easy to load and unload—and are especially designed to meet the requirements of the man who wants a light, strong wagon for all kinds of work on the farm. Let us send you our catalogue. It will give you complete information.



Tudhope-Anderson Co'y, Ltd.
Orillia, Ontario

**ALWAYS WINS
field competitions because of
its wonderful capacity**

See **The
"Bissell"**
Disc Harrow in action and
you'll buy no other. Write for
Harrow Catalog to Dept. R

T. E. Bissell Co., Limited
Elora, Ontario

APPLE TREES

We are specialists in the production of hardy varieties for the north and cold climates. Our apple trees are budded on whole roots and grown on our nursery (70 acres) at Pointe Claire, Que., under the rigorous climatic conditions of this section, and they are, therefore, superior as a stock for northern planters, both in the garden and the orchard.

Hardy Trees are what you want—they are what you *must* have if you want to make a success of your planting. At present we have a full line of all the best standard varieties on hand, and intending purchasers are urged to place their orders now while we have a full selection on hand.

CANADIAN NURSERY CO., LTD.,
10 Phillips Place, MONTREAL, QUE.

A few vacancies for good honest salesmen.

HACKNEY AUTO - PLOW

"The Great One-Man Outfit."

The only "One-Man" Machine on the market that can be used successfully for plowing, seeding, harvesting, threshing, as a tractor for hauling loads, road grader, and as a stationary engine for all power purposes. Send for illustrated catalogue and testimonials.

HACKNEY MANUFACTURING CO.
618 Prior Ave. St. Paul, Minn.



Get Our Scale Booklet

**STOP THE LEAKS
ON THE FARM**

Every farmer is a large buyer and seller—and whether he is buying feeding stuffs, fertilizers, seed, etc., or selling live stock, grain and potatoes—unless he has a Scale on the Farm he cannot tell whether or not he is the victim of short weight.

Short weights on purchases and sales soon take the cream off the farm profits. But a Wilson Scale places the Farmer's business on a business-like foundation.

Every farm will pay a profit if all the profit is received—but what farm can stand constant leakage of a few pounds here and a few pounds there? Is it any wonder that profits are some-

We make two Scales which are specially suited to the varied requirements of a Farm.

The first is No. 66—2,000 lbs. capacity—a good reliable scale—of which we have sold hundreds to Farmers, who usually fit to it a rough platform for weighing live stock.



The other farm scale is our No. 296—4,000 lbs. capacity. This is a larger and more expensive Scale, and is supplied with a cattle platform. It is in our estimation the ideal scale for all farm purposes, and is especially useful on stock or dairy farms.

Both Scales are of the best materials, solidly made and accurately adjusted. They have all the features which have made Wilsons supreme in scale manufacture. Government certificate free with each Wilson Scale.

1



THIS BOOK FREE

Perhaps this "leakage" thought is new to you. Perhaps you have grown accustomed to letting others do the weighing for you. But you can see that this is not good business—you are not **SURE** of getting your share of profits. You will be interested in our book "How to Stop the Leaks," which we are willing to send free to Farmers. Do not let another season pass. Stop the leaks now. Send for your copy to-day.

C. WILSON & SON · SCALES
90 ESPLANADE EAST TORONTO

**Has More Conveniences**

There are a number of good washing machines on the market. But there's one that runs easier, one with more conveniences than ordinary washers. It's The Connor Ball-Bearing Washer. You don't have to walk around The Connor Ball-Bearing Washer when washing

or wringing clothes. The handle for operating the tub, the wringer handle, and the screw-wheel for throwing wringer forward out of the way when raising cover or locking into upright position over tub for wringing, all are on the same side.

CONNOR BALL-BEARING WASHER

You don't have to lift the lid off the washer and place it on the floor to leave a puddle of soapy water for you to mop up. The lid on the Connor Ball-Bearing Washer is hinged. When raised it rests on the tub handle and drains into the tub. When closed it fits over the tub, not into it. And it is held down firmly, so no water can slop out when machine is going full speed, or any steam escape. There is no centre post in the tub to take up room or for

the clothes to wind around and tear. The stand is substantial, too. It rests solidly on the floor. It doesn't slip along the floor as do the ordinary stool-like stands. You see, The Connor Ball-Bearing Washer is no ordinary washer by any means.

But write to-day for our booklet. Read all about the Connor Ball-Bearing Washer—the washer that runs on ball-bearings, that's sold with a straightforward "money back if not satisfactory" guarantee tag on every washer. Let us tell you where you can see one.



J. H. CONNOR & SON, LIMITED, OTTAWA, ONTARIO

Write for Booklet

One Man Less to run this Dain Press

MEANS considerable of a saving to you on a season's work. It means a saving worthy of your consideration. It is a saving that is worth investigating.

Pull Power and Self-Feed

enables the Dain to do faster and better work. It is unequalled for labor-saving qualities and rapid baling.

Pull power permits press to be set at most convenient point to pitch to—the middle of the stack and not at the end, where press has to be moved once or twice while baling.

Pull power does away with heavy pitman between press power and plunger. This makes a saving in draft and does away with high obstruction to hinder team in stepping over, consequently capacity is increased.

Self-feed saves hand work and increases the capacity of press. It is automatic and positive in operation. It carries hay well down in pressing chamber. It does not string hay out when withdrawing from hopper.

Dain self-feed is composed of few parts. No chains, springs or

complicated devices are found on the Dain self-feed. Feeder is so simple it is practically impossible for it to get out of order.

Neat, smooth, square-ended bales bring top market price. Patent tucker on Dain makes highest grade bales.

In all features to lessen labor and cost of baling and to make a strong, durable and satisfactory machine, the Dain Self-Feed Pull Power press is unequalled.

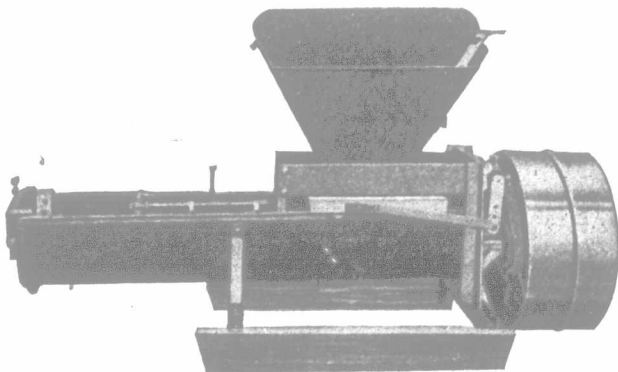
WRITE US FOR CIRCULAR NO. M 119

Address **John Deere Plow Company Ltd.**
Welland, Ont.



Three Sizes:

14x18, 16x18 and 18x22

**BESSER CONCRETE MACHINERY****Continuous Mixer**

We manufacture: Power Cement Drain and Sewer Tile Machines; Hand Cement Drain and Sewer Tile Moulds; Power Cement Brick Machines; Hand Cement Block Machines; Cars and Track for Concrete Plants; Power Tamp Machines for Blocks and Tiles; also Windmills, Towers and Tanks. Write for catalogues.

Woodstock Wind Motor Co., Limited, Woodstock, Ont.