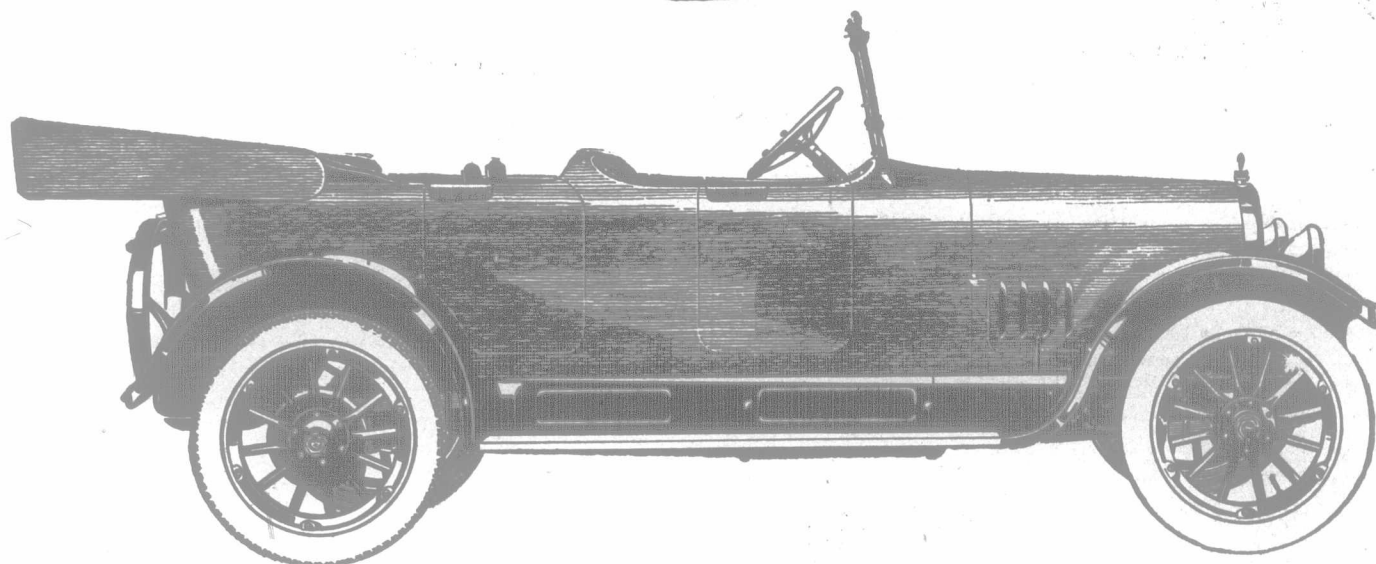


Seven Passenger
\$1815

f. o. b. point of shipment—Subject to change without notice



A New Wonderfully Balanced Six Sturdy Light Weight—Abundant Power

This announces a brand new development in Sixes.

Here it is at last!

A popular priced *Light Six* with *weight and power in scientific balance*.

Think what that means.

Economy and durability in combination with six cylinder advantages at last an accomplished fact.

Don't ask any more why you can't get a durable light weight six with real six cylinder performance.

You can—it's this new Willys Six.

By scientific designing with the aid of our great experience in building

Sixes, we have produced a *lighter car* without sacrificing sturdiness.

Its forty-five horsepower motor combined with its light weight, makes it a wonderful performer.

Quick as a flash on the getaway; speedy; surprisingly economical, yet with worlds of power and the sturdiness to support it.

Think what this means figured
—in greater gasoline economy
—in additional tire mileage
—in an easier car to handle.

Now let the Willys-Overland dealer demonstrate the wonderful performance of the New Willys Six—we want

you to sense what this new balance between power and weight means in an economical, durable light Six.

We want you to know, too, what a wonder the New Willys Six is from the standpoint of easy riding and easy handling.

Also we want you to know what a beautiful car it is—long, sweeping graceful lines—one of the year's most advanced models—a perfect beauty.

And the price!—\$1815 complete!

It's the Six you've longed for—go in and see it now—before our dealers are loaded with orders for more Willys Sixes than they can get.

Motor 3 1/4-inch x 5 1/4-inch
45 horsepower
4 1/4-inch tires

120 inch wheelbase
7-passenger capacity
Finished in olive green

Catalog on request. Please address Dept. 1160

Willys-Overland, Limited
Head Office and Works, West Toronto, Ont.
Manufacturers of Overland and Willys-Knight Motor
Cars and Light Commercial Wagons