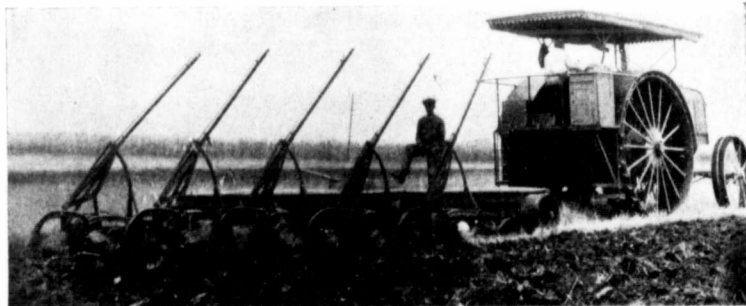


HUBER



HUBER FOR POWER

Farmers and Threshermen recognize the necessity for mechanical power. There may be a difference of opinion as to what form of the power is best adapted to the work in each individual case. That is a detail that each man should determine for himself.

For the man who prefers the internal combustion gas and oil tractor for his work, we have a machine that will fill the bill, and in a size most suitable.

The big size, the "Thirty-Sixty," is shown above. There is not any farm or threshing job that it is not able to handle successfully. It has a powerful 4-cylinder motor, generating force sufficient for all usual and unusual requirements.

For fuel, it is regularly fitted to burn either gasoline or kerosene. The user has the advantage of selecting the one that is most convenient or the cheapest in his community. He will be well satisfied with the results in either case.

If your operations are not extensive enough to justify you in buying the big tractor, then we have other sizes for work that does not need as much power as the big tractor furnishes.

The "Twenty-Forty" will give a good account of itself under all circumstances, for either belt or traction work. The motor is 2-cylinder opposed.

Our smallest tractor is the "Fifteen-Thirty;" but it will do the work of the quarter section farm nicely. It is also 2-cylinder opposed.

For the man whose preference is for steam power, we have the Agricultural Engine in sizes from 16 to 30 horse power. In the heavy Plow Engine type, we make them from 20 to 30 horse. All are equipped with band pulley, so that they are good for either belt or traction work.

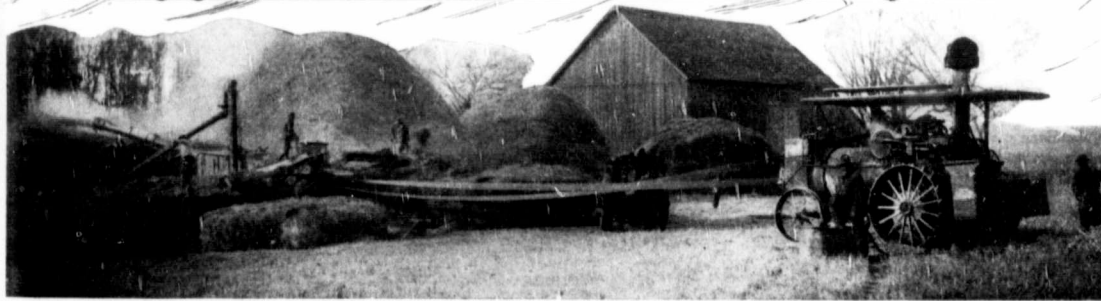
All Huber steam engines are mounted on the self-contained return-flue boiler; the one that produces the most steam with the least consumption of fuel and water. All may be equipped with our patent friction guide. With this device, the engine guides itself by steam power. It relieves the operator of the hard work of steering by hand wheel.

We would like to confer with you regarding your need for power; or the threshing machine to run with that power. We make the complete line, and can take care of your wants.

THE HUBER MANUFACTURING CO.,

Cor. Logan and Arlington, WINNIPEG, MAN.

Home Office and Factory, - - - - - Marion, Ohio, U.S.A.



You saw this advertisement in this magazine. Don't forget to say so when writing.