



FIGURE No. 225 W.—This illustrates LADIES' SHIRT-WAIST.—The pattern is No. 9129, price 1s. or 25 cents.
(For Description see Page 645.)

The vest is displayed between stylish jacket fronts, turned back above the bust in broad revers that are gracefully curved at the ends. The jacket-basque is especially desirable for stout figures, having two under-arm gores at each side. It has fulness underfolded below the waist at the side-back seams to form a box-plait at the center of the skirt. The one-seam sleeves are in the popular size with becoming fulness at the top, and the standing collar is encircled by a wrinkled stock.

The three-piece bell skirt may be box-plaited or gathered at the back and the elaborate decoration of braid adds to the beauty of the deep, flute folds at the back and sides.

The great advantage of such a toilette is its appropriateness for the promenade and for many social day functions. The new chevrons in weaves especially calculated for Summer wear will be made up in this style as may also canvas weaves, serge and many of the novelty goods.

The hat is stylishly trimmed with flowers and a bow of tinted ribbon.

LADIES' ETON JACKET, WITH BELL SLEEVES. (TO BE MADE WITH A PLAIN OR FANCY LOWER EDGE.)

(For Illustrations see Page 650.)

No. 1334.—The bell sleeve is a novel feature of many of the new Eton jackets and is exceedingly graceful in effect. The jacket here pictured is made of covert cloth and fin-

ished with machine-stitching. It extends to the waist and may be made with a plain or fancy lower edge, as illustrated. It is fitted by single bust darts, under-arm gores and a curving center seam, the lower corners of which will be rounded off, if a fancy lower edge be desired, the lower front corners of the fronts being rounded to correspond. The bell sleeves are circular in shape and fall in ripples; they are sewed almost smoothly into the arm's-eyes. The fanciful collar is in four sections; it rises high at the back and rolls deeply in front and the seams are terminated a short distance from the top with pretty effect.

Jackets of this style are generally made of cloth, cheviot, silk, velvet, etc., and may match a special suit or contrast with it. The decoration is entirely a matter of personal taste.

We have pattern No. 1334 in eight sizes for ladies from thirty to forty-four inches, bust measure. For a lady of medium size, the jacket requires three yards and three-eighths of goods twenty-two inches wide. Price of pattern, 1s. or 25 cents.

LADIES' BOX ETON JACKET, WITH BELL SLEEVES.

(For Illustrations see Page 650.)

No. 1335.—This *chic* jacket of green cloth effectively combines characteristics of the box and Eton modes. The close adjustment is made by single bust darts and center and under-arm seams, and the corners are prettily rounded off at the lower end of the center seam. The fronts deepen to a point at the center and lap in double-breasted style, the closing being made invisibly. They are reversed in notched lapels by an embroidered rolling collar and the lapels are embroidered to match. Two cord frogs below the lapels are the only other decoration. The bell sleeves fall in flutes peculiar to the style and circular shaping.

Velvet, corded silks and moiré are appropriate for such jackets as well as fine cloth in fashionable shades of red, brown, blue, gray and green. Passementerie, chiffon, ruchings and braid ornaments are popular trimmings.

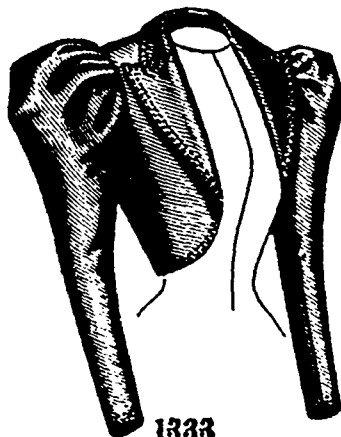
We have pattern No. 1335 in six sizes for ladies from thirty to forty inches, bust measure. For a lady of medium size the jacket requires three yards and three-eighths of material twenty-two inches wide. Price of pattern 1s. or 25 cents.

LADIES' JACKET, WITH FLOUNCE-COVERED BELL SLEEVES.

(TO BE MADE WITH FRONTS IN ETON OR BOLERO STYLE AND WITH THE BACK PLAIN OR FANCY AT THE LOWER EDGE.)

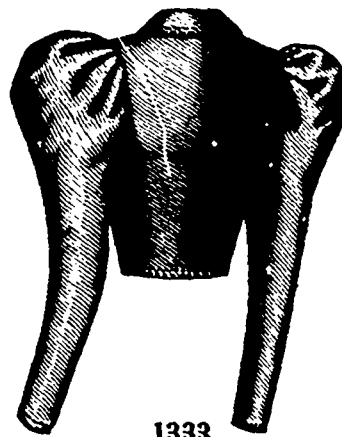
(For Illustrations see Page 651.)

No. 1336.—This stylish jacket is decidedly *chic* in effect and is here shown made of corded silk and lace flouncing. The fronts of the jacket may be made in Eton or bolero style and the back may be plain or fancy at the lower edge, as shown in the engravings, the fancy lower edge usually going with the bolero fronts. The jacket extends nearly to the waist and



1333

Front View.



1333

Back View.

LADIES' BOLERO JACKET, WITH NOTCHED LAPELS.

(For Description see Page 645.)

under-arm gores separate the fronts from the seamless back and give a becomingly smooth adjustment at the sides. The Eton.