

# Miners Wanted

To Chew

## BULL DOG TOBACCO,

Because it is the only Tobacco  
which does not excite Thirst  
for Water after using  
**TRY IT!**

The St. Lawrence Tobacco Co., Ltd.

—Montreal—  
—W. B. Reynolds, Halifax Representative—

## MINING SHOVELS

our 'FENERTY' Brand

COOK'S PAN SHOVELS,  
COAL TRIMMERS SHOVELS,  
SCRAPER SHOVELS, ETC.

—ARE USED BY—

*The Largest Mines in Canada*

—MANUFACTURED BY—

**The HALIFAX SHOVEL CO.**

HALIFAX, N. S.

ALL GOODS GUARANTEED.

*Genuine Garlock Parkings*  
FOR ALL PURPOSES.

**Pipe and Boiler Coverings,  
ENGINEERS SUPPLIES.**

also

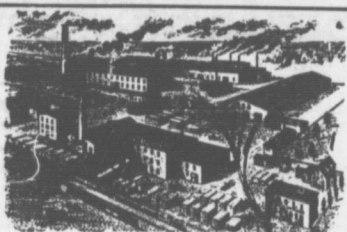
"Tauril" High Pressure Jointing  
the Best Sheet Packing yet  
Produced.

**THE GARLOCK PACKING CO.**  
HAMILTON, ONTARIO.

Used by Collieries in Lancashire, Staffordshire & Yorkshire

'X TERRA' COLLIERY LAMP OIL  
For Marmat, Mussels Deflector or Closed Lamp.

PURE WHITE FLAME. LOW PRICE.  
**E. WOLASTON, Dutton St. MANGHESTER**  
Sole Representatives for Canada, AUSTEN BROS.,  
Halifax, N. S.



—MANUFACTURERS OF—

RAILWAY  
STREET and  
MINING

# CARS,

CAR WHEELS Church Pews.  
FORGINGS & Fittings for Stores, Schools &c.  
CASTINGS A SPECIALTY.

Large Stocks of Foreign and Domestic Lumber on Sale.

**Rhodes,** BUILDING MATERIALS  
GENERAL  
**Curry & Co., Ltd.**

Branch  
ROBBIE STREET  
HALIFAX, N. S.

**AMHERST N. S.**

## HOLIDAY FARES

VIA

**INTERCOLONIAL  
RAILWAY**

FOR

**CHRISTMAS AND  
NEW YEAR.**

FIRST CLASS ONE WAY FARE  
Between all stations on the line.

Going Dec. 21 to Jan. 1, inclusive.  
Returning until Jan. 3rd, 1910.

To stations beyond Montreal,—  
Going Dec. 24, 25. Returning until  
Dec. 27, 1909.

Going Dec. 31 and Jan. 1, Returning  
until Jan. 3, 1910.  
FIRST CLASS ONE WAY FARE  
TO MONTREAL, ADDED TO FIRST  
CLASS ONE WAY FARE AND  
ONE-THIRD BEYOND.

Going Dec. 21, 22, 23 24, 25, 28,  
29, 30 31, Jan. 1

Returning until Jan. 5, 1910.

Territory—Detroit, Mich., Port  
Huron, Mich., Sault Ste Marie,  
Mich., Port Arthur, Ont., and points  
in Canada east thereof.