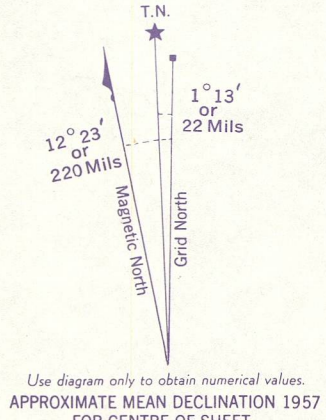
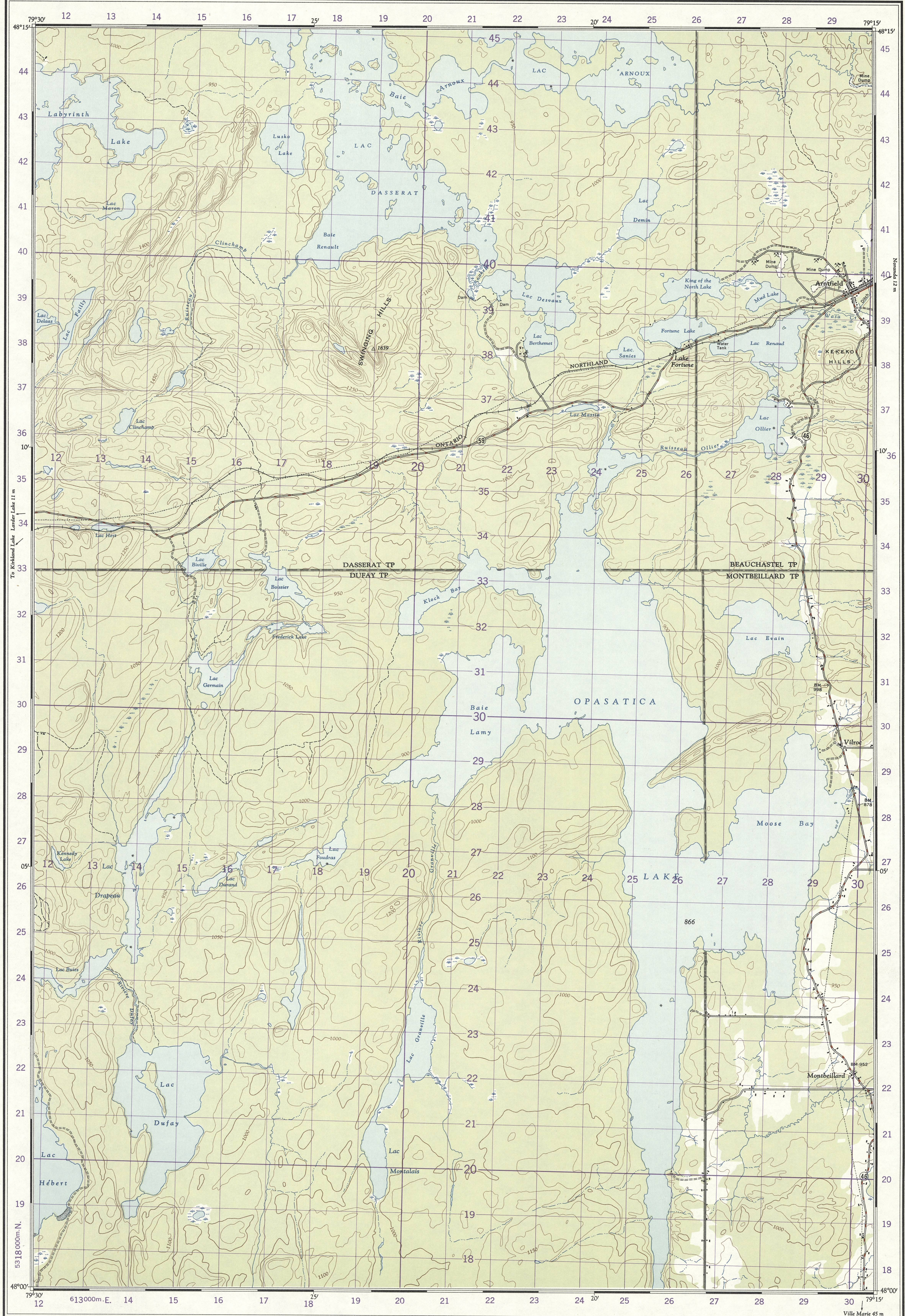


Refer to this Map as: 32 D/3 West Half EDITION 1 A SE SERIES A 761



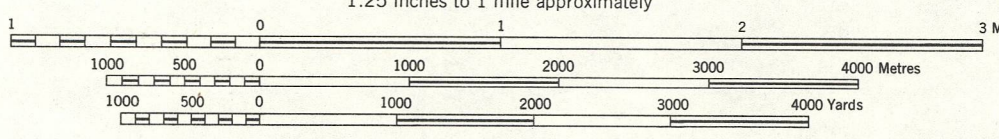
Produced and printed by the Surveys and Mapping Branch, Department of Mines and Technical Surveys, 1957, from air photographs taken in 1952.

MAGNETIC DECLINATION 11°10' WEST AT CENTRE OF MAP 1957 Annual magnetic change 3' easterly

McGILL UNIVERSITY MAP COLLECTION OCT 11 1968 GEOGRAPHY DEPARTMENT MONTREAL

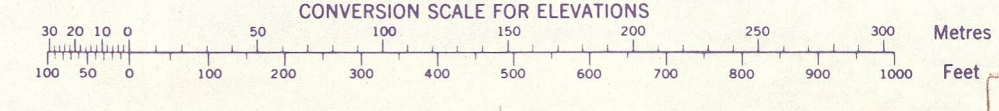
ROUYN
TEMISCAMINGUE COUNTY
QUEBEC

SCALE 1:50,000
1.25 inches to 1 mile approximately



CONTOUR INTERVAL 50 FEET
Elevations in Feet above Mean Sea Level
North American Datum 1927

Copies may be obtained from the Map Distribution Office, Department of Mines and Technical Surveys, Ottawa, at 25 cents each.



TO GIVE GRID REFERENCE ON THIS SHEET FIGURES, IGNORE THE SMALLER FIGURES printed around the margin of the map. These are for finding the full co-ordinates. USE ONLY THE LARGER FIGURES PRINTED IN THE MARGIN OR ON THE FACE OF THE MAP. VIZ: 613

POINT		WATER TANK	
East	North	East	North
26	38	6	4
266	384		
STANDARD MILITARY GRID REFERENCE 266384 (To nearest 100 Metres)			
Nearest numeric grid reference: 100,000 Metres (Approximately 63 Miles)			

ONE THOUSAND METRE UNIVERSAL TRANSVERSE MERCATOR GRID ZONE 17

REFERENCE

Roads:	hard surface, all weather	more than 2 lanes	2 lanes
	hard surface, all weather	less than 2 lanes	2 lanes or more
	loose surface, all weather		
	loose surface, dry weather		
	winter, cart track	Winter road	
	trail or portage		
Railways:	normal gauge, multiple track	Station	
	normal gauge, single track	Siding	Stop
	narrow gauge, single track		
	abandoned or under construction		
Bridges:	road; railway		
Boundaries:	international, with monument		
	provincial		
	county or district		
	township or parish		
	park, reserve, etc.		
	Power transmission line		
	Horizontal control point, with elevation	454	
	Bench mark, with elevation	BM 157	

REFERENCE

Mine or Open cut	Lighthouse
Building; Barn	School; Post Office
Church	Cemetery
Built up area	
Telephone line	
Streams:	
intermittent or dry	
indefinite	
Lake intermittent, indefinite	
Inundated land, seasonal	
Marsh or Swamp	
Foreshore flats	
Wharf or Pier; Breakwater	
Rocky reef	
Small island, rock bare or wash	
Contours:	
elevation	
depression	
approximate	
Cliff	
Embankment	
Forest	

INDEX TO ADJOINING SHEETS

80°00'	32 D/5	32 D/6	78°30'
	MAGUIV RIVER	KANASUTA RIVER	CLÉRICY
	32 D/4	32 D/3	32 D/2
	LARDER LAKE	ROUYN	KINDOJEVS
47°45'	31 M/13	31 M/14	31 M/15
	ENGLEHART	LAC BARRIÈRE	LAC ROGER
80°00'			47°45'

ROUYN 32 D/3 WEST HALF EDITION 1 A SE

SUPERSEDED EDITION