

Miners Wanted

TO CHEW

PAY ROLL

Plug Tobacco

WANTED.

At the several collieries of the Dominion coal co. Limited, skilled coal miners and mine laborers.

Apply on the works Or by letter

Dominion Coal Company, Ltd

THE GARLOCK PACKING CO.



GARLOCK'S STEAM, WATER and AMMONIA
—PACKINGS—
ASBESTOS SECTIONAL COVERINGS.

Hamilton, Ontario.

Used by Collieries in Lancashire, Staffordshire & Yorkshire

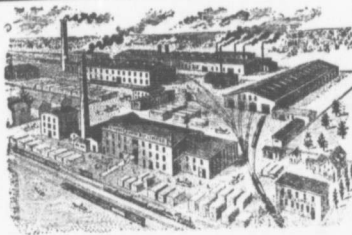
'XTERRA'

COLLIERY LAMP OIL

For Maraut, Musuel Defector or C/Speed and

PURE WHITE FLAME
E WOLASTON, Dutton St MANCHESTER

Sole Representatives for Canada, AUSTEN BROS.,
Halifax, N. S.



—MANUFACTURERS OF—
CARS,
RAILWAY STREET and MINING
CAR WHEELS Church Pews,
FORGINGS & Fittings for Stores, Schools, &c
CASTINGS A SPECIALTY.

Large Stocks of Foreign and Domestic Lumber on Sale.

Rhodes, Curry & co., Ltd.
BUILDING MATERIALS GENERAL

Branch ROBBIE STREET, HALIFAX, N. S. AMHERST, N. S.

INTERCOLONIAL RAILWAY

On and after Sunday, June 24th, 1906 trains run daily, (Sunday excepted,) as follows:—

—TRAINS LEAVE STELLARTON—		
No 144 Mixed for Hopewell	5.55
No 79 Mixed for Trenton	6.30
78 Mixed for Hopewell	6.58
18 Express for Halifax and St. John	7.40
21 Mixed for Pictou Landing	7.45
62 Mixed for Pictou	8.15
25 Mixed for Mulgrave	10.55
19 Express for Sydney	11.00
25 Mixed for Pictou	13.50
66 Mixed for Truro	15.20
8, Express for Sydney	16.05
20 Express for Halifax and Montreal	16.05
140 Mixed for Pictou	16.50
101 Mixed for Pictou Landing	18.10
21 Mixed for Hopewell	19.40
65 Mixed for New Glasgow	19.45
26 Express Halifax and St. John	21.15
17 Express for New Glasgow	21.15
66 Express for Pictou	21.15
—TRAINS ARRIVE AT STELLARTON		
79 Mixed from Hopewell	6.50
78 Mixed from Trenton	7.30
61 Express from Pictou	7.35
18 Express from New Glasgow	7.35
21 Mixed from Hopewell	8.00
25 Mixed from Truro	10.35
25 Mixed from New Glasgow	10.40
27 Mixed from Pictou	13.15
26 Mixed from Mulgrave	13.45
19 Express from Halifax and St. John	15.35
140 Mixed from Pictou	15.40
83 Express from Halifax, St. John, Quebec	15.50
23 Express from Sydney	18.10
21 Mixed from Pictou Landing	18.45
77 Mixed from Hopewell	19.30
66 Express from Pictou	19.35
86 Express from Sydney	21.05
66 Express from New Glasgow	21.05
17 Express from St. John and Halifax	21.10

All trains are run by Atlantic Standard time Twenty four
O'clock is mid-night. Moncton, N. B. June 23rd. 1906