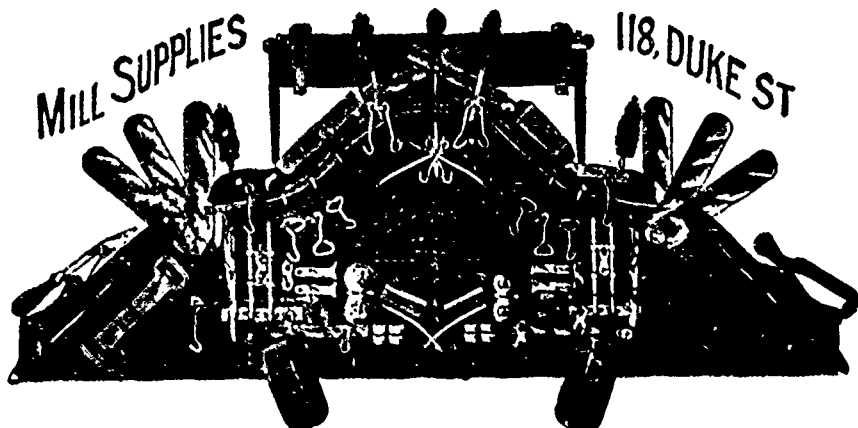


GEORGE REID & COMPANY



MILLS FOR SALE

BEAM WARPS

Sole Agents for HAMILTON COTTON CO.

Card Clothing

We are Sole Agents for Messrs. Samuel Law & Sons, Cleckheaton, Eng., and have always a large stock on hand.

WOOLEN MACHINERY—Cards, Mules, Looms, Pickers, etc. All kinds for sale.

WOOLEN MILL SUPPLIES—Every description kept in stock.

WOOL—Sole Agents for FRANCIS WILLEY & CO., Bradford, Eng. A large stock always on hand.

G. B. FRASER,

**3 Wellington Street East
TORONTO**

REPRESENTING

Miller Bros. & Co., Montreal; Paper and Celluloid Collars, Cuffs and Shirt Bosoms.

W. D. Van Egmond, Seaforth Woolen Mill, Etobicoke, Felizes and Tweeds.

I. A. Teskey, Appleton, Ont., Fine Tweeds and Cassimeres.

D. Fisher, Paisley, Ont., Etobicoke and Tweeds.

John J. Ashley & Co., Bradford, Eng., Dress Goods and Worsteds.

Hornet, Deilmann & Co., Barmen, Germany Buttons, etc.

S. W. Whitham, Leeds, Eng., Woolens.

Merrimack Print Mfg Co., Lowell, Mass.

Burton Bros. & Co., New York; Linings, &c.

H. T. Lamkin & Co., Cotton Brokers, Vicksburg Mississippi Long Staple Cotton a specialty.

COP TUBES
Cones and Shells
WORSTED TUBES
Conical Tubes
MAILING TUBES
Haworth & Watson. LOWELL, MASS.

ESTABLISHED 1865

GEORGE W. PAYNE & CO.

PAWTUCKET, R. I.

Builders of the

PAYNE & MATHEWSON



PATENT UPRIGHT CONE WINDERS

For Hosiery purposes,

Winding from Cop, Skein or Bobbin

SKEIN SPOOLER

with adjustable skein holders for cotton wool and worsted. Upright Quillers, quills from cop, skein or bobbin, Ring Dresser, Spooler and Reel Spindles, Cop Skeiners, Warp Spools, Spooler Guides, Bolsters and Steps made and repaired at short notice.

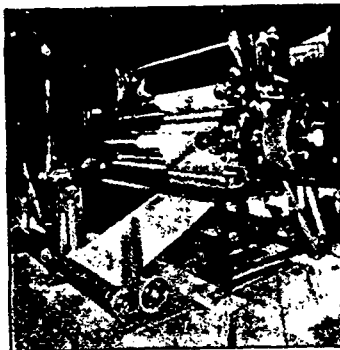
DEROCHIE BROTHERS, Cornwall Ont.

We build

NAPPING MACHINES

up to 80 inches wide, to nap one or two pieces in width. The machine naps cotton or woolen goods; can either furnish folders or winding attachments; this machine is so geared that the changing of small gears changes the nap on cloth that is needed. The main shaft is 3 1/2 in. in diameter. All Roller Bearings are bronze and self-oiling. All Rolls are made of hydraulic piping—and every part of the machine is first-class in every respect.

Some of the machines are running at Canada Mills, Cornwall; Montreal Cotton Co's Mills, Valleyfield; Wm. Parks & Sons, St. John's; Dominion Cotton Mills, Halifax.



The
UNDERWOOD

Visible writing start to finish—tabulating attachments for invoicing, billing, etc. No extra cost, easy touch, rapid action, handsome designs—

... fully guaranteed. ...

All other makes, new and second-hand, at reduced prices.

CREELMAN BROS. TYPEWRITER CO.

15 Adelaide Street East, TORONTO