

There were 146 entries, and the premiums paid amounted to \$959.

In 1886, the Show was again held in Guelph, on the 8th, 9th and 10th of December. The Agriculture and Arts Association contributed \$500, and the Guelph Fat Stock Club

Fat Stock Club similar to those of 1890. The show was held on the 9th and 10th of December; 81 entries were made, and \$325 paid as premiums.

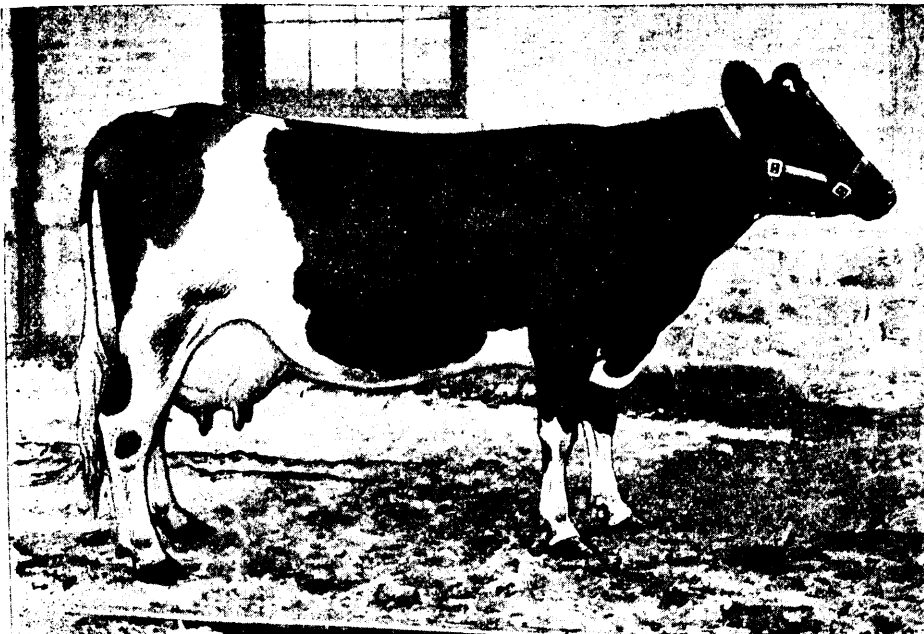
In 1892 a deputation from the Guelph Fat Stock Club again waited on the Board of the Agriculture and Arts

Association to ask that the Provincial Fat Stock Show be again held in Guelph. This they agreed to do, provided they had the control and management of the show. This year the Dominion Sheep and Swine Breeders' Associations joined with the Agriculture and Arts Association in holding the annual show. The result was a marked success. There were 171 entries in the various classes, almost double the number entered the preceding year. From this time forward the show seemed to have received a fresh impetus.

The following agreement was entered into for holding the show: The Agriculture and Arts Association to contribute \$1,000 towards the prize list, collect all receipts, and pay all expenses, and have six members on the Committee of Management; the Sheep Breeders' Association to contribute \$500 towards the prize list for sheep, and have two mem-

bers on the Committee of Management (the agreement with the Swine Breeders' Association was similar to that made with the Sheep Breeders' Association); the Guelph Fat Stock Club to provide accommodation, and to have three members on the Committee of Management. There were paid in premiums \$1,453, over three times the amount paid in 1891.

In 1893, on the invitation of the Guelph Fat Stock Club, the Board of the Agriculture and Arts Association and the Dominion Sheep and Swine Breeders' Associations decided that the Provincial Fat Stock Show should again be held in Guelph. This year the Sheep and Swine Breeders' Associations had a larger representation on the Committee of Management. The entries were again doubled, there being 362 against 171 in 1892. The premiums paid amounted to \$2,803. The following is the agreement entered into between the Associations under whose auspices the show was held: The Agriculture and Arts Association were to contribute \$695 to the cattle classes, and \$375 to each of the sheep and swine classes and collect all receipts. The Sheep and Swine Breeders' Associations were to contribute \$1,000, and the Guelph



The famous Holstein Cow, Calamity Jane, the property of A. & G. Rice, Currie's Crossing, Ont. Sweepstake Dairy Cow shown at the Ontario Provincial Fat Stock, Dairy and Poultry Show.

\$250, towards the prize list; the Fat Stock Club also provided accommodation. There were 136 entries, to which were paid \$697 in premiums.

In 1887 the show was held in Toronto, under the auspices of the Agriculture and Arts Association, on the 13th, 14th and 15th of December. As no other building was available, Mr. W. D. Grand placed his Repository at the disposal of the Agriculture and Arts Association, who were to contribute \$500 towards the prize list; \$90 was also donated by private individuals. There were 81 entries, and \$500 was paid in premiums.

In 1888 the Agriculture and Arts Association received an invitation from the County of Oxford Fat Stock Club to hold the Provincial Show at Woodstock. It was decided, however, not to hold a show that year.

In 1889 no Provincial Fat Stock Show was held. The Agriculture and Arts Association, however, contributed \$60 towards the local show held by the Guelph Fat Stock Club.

In 1890 a deputation from Guelph waited on the Board of the Agriculture and Arts Association, asking that they hold the Provincial Show that year in Guelph. The Board agreed to contribute \$300 towards the prize list on condition that the Guelph Fat Stock Club contributed \$200, provided accommodation, and would make up any shortage over and above the amount of gate receipts and entry fees. This they agreed to do. The show was held on December 10th and 11th in the Western Hotel stables; these were provided by the proprietor of the Western Hotel free of charge. There were 114 entries, and \$632 paid in premiums.

In 1891 arrangements were made with Guelph



A group of famous Holstein Dairy Cows, the property of A. & G. Rice, Currie's Crossing, Ont. Shown at the Ontario Provincial Fat Stock, Dairy and Poultry Show.