

CHURCH DAY SCHOOL
Major Street, Toronto

SISTERS S. JOHN THE DIVINE
KINDERGARTEN and
ELEMENTARY DEPARTMENT

Trinity College School

PORT HOPE, Ont.
FOUNDED 1876.
Provides a complete education for boys by the harmonious development of their mental, moral, and physical powers. A splendid and beautiful location overlooking Lake Ontario, one mile from the Town of Port Hope. For calendar and full information apply to **REV. HERBERT SYMONDS, M.A., D.D.**, Head Master.

Bishop Bethune
College, Oshawa, Ontario

UNDER THE CHARGE OF
The Sisters of St. John the Divine
Visitor, the Lord Bishop of Toronto.
Preparation for the University.
For terms and particulars apply to the **SISTER IN CHARGE**, or to
The Sisters of St. John the Divine
MAJOR STREET, TORONTO

The Parkdale Church School.

(Established by the Council of The Bishop Strachan School).
151 Dunn Avenue, Parkdale.
Reopens after Christmas Vacation on Monday, 12th January, 1903. Best Masters in Music, etc. Kindergarten Work a specialty. For Calendar apply to **MISS MIDDLETON**, Lady Principal.

CHAS. P. SPARLING & CO., Church Book-sellers, Publishers, &c., 13 Isabella Street, TORONTO.

FULL Stock of Parish and Service Registers, Chants and Canticles, Certificates, Catechisms, Class Books, Reward Cards, Envelopes, etc. Price lists and samples furnished. Telephone, North 2556.

The CANADIAN CHURCHMAN

goes to the Bishops, clergy and laity in all parts of our broad Dominion belonging to the Anglican Church and is extensively read and circulated in their families, among the adherents of other bodies, not only in Canada but in all parts of the world.

THEREFORE

Advertisements of Colleges, schools, and public institutions reach the class they are meant for. Clerical, choir and all similar notices find in the

CANADIAN CHURCHMAN
their best medium.

Insurance announcements, company meetings and business advertisements generally which appear in the

CANADIAN CHURCHMAN
have a unique circulation.

Appointments and situations wanted inserted in the **CANADIAN CHURCHMAN** receive a quick reply.

Owners of specialties should remember that the **CANADIAN CHURCHMAN** is read from beginning to end in homes all over the Dominion. Therefore advertise in it.

THE CANADIAN CHURCHMAN
1 Toronto Street,
TORONTO.

Edgehill, Church School for Girls
WINDSOR, NOVA SCOTIA.

INCORPORATED 1897.
The Bishop of Nova Scotia, Chairman Board of Trustees. The Bishop of Fredericton, member of Board of Trustees ex-officio.
Miss Jeffrey, of Cheltenham Ladies' College, England, Principal, assisted by Ten Resident Experienced Governesses from England (five of whom are specialists in the Music and Art Departments), and one non-resident Instructor, Housekeeper, Matron and Nurse.
Extensive building with capacity for 100 Residents. Heated by Hot Water, Lighted by Electricity. Grounds covering eight acres, with Lawns for Tennis, Croquet, Basket Ball, Hockey, &c. School Dairy and Laundry.
Preparation for the Universities.
EASTER TERM begins on **Wednesday, April 1st, 1903.**
For Calendar apply to **DR. HIND.**

ST. ALBAN'S CATHEDRAL SCHOOL
Toronto—Incorporated

For **BOARDERS and DAY BOYS**. Re-opens January 12th. Chairman—His Lordship the Bishop. A thoroughly qualified staff. For prospectus address **M. E. MATTHEWS**, Principal.

RIDLEY COLLEGE
ST. CATHARINES, ONT.

New Preparatory School for boys under fourteen, with separate building, grounds and staff. No day boys.
Upper School prepares for the Universities, etc. Apply to **REV. J. O. MILLER, M.A., D.C.L.**, Principal.

WESTBOURNE School for Girls
340 Bloor Street W., - TORONTO, Can.

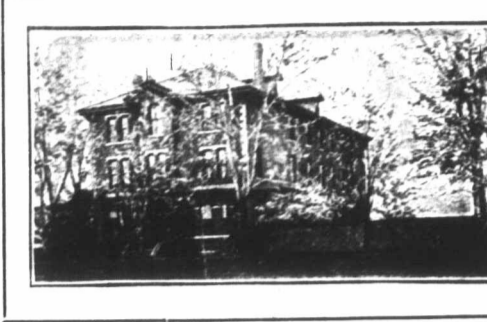
Re-opens January 5th, 1903.
A Residential and Day School, well appointed, well managed and convenient. Specialists in each department. Affiliated with the Toronto Conservatory of Music. Dr. Edward Fisher, Musical Director; F. McGillivray Knowles, R.C.A., Art Director. For announcement and information, address the principals, **MISS M. CURLETTE, B.A.**, **MISS E. E. DALLAS, Mus. Bach.**

A BUSINESS OPPORTUNITY
A complete and practical course by mail in **COMMERCIAL WORK**
INCLUDING
Bookkeeping, Penmanship, Arithmetic, Commercial Law, Business Correspondence.....
Write today for particulars.
COMMERCIAL DEPARTMENT, CANADIAN CORRESPONDENCE COLLEGE, LIMITED, TORONTO, ONT.

Church = Extension Association
106 Beverley Street, Toronto
School of the Sisters of the Church.
Supplies made to order from \$3.00 up
Orders taken for all kinds of Church Needlework. Also Books and Publications.
Apply Sister in Charge.

GRAND TRUNK RAILWAY SYSTEM
Speed || Comfort
Buffalo and New York
"The Double Track Route"

The Day Express leaves at 9.00 a.m., daily; through train; Pullman Parlor Car to Buffalo, arriving 11.15 a.m. Arrives New York 10.00 p.m., (except Sunday).
11.50 a.m., daily, Buffalo Express, arriving 3.05 p.m. Dining and Pullman Cars from Hamilton.
The "International Limited," 4.50 p.m., daily, arrives Buffalo 8.25 p.m. Through Coach and Cafe Parlor Car.
The "New York Express" leaves 6.15 p.m., daily, with Dining Cars serving supper and breakfast, and through Pullman Sleeper, arrives Buffalo 9.50 p.m., New York 9.15 a.m.
Tickets and all information from **J. W. RYDER, C. P.** and Ticket Agent, North-West corner King and Yonge Streets, Phone Main 4209. TORONTO.



"Glen Manor"
RESIDENTIAL AND DAY SCHOOL FOR GIRLS
651 SPADINA AVENUE, TORONTO
Thorough English Course. Individual Attention. Pupils prepared for the Universities and for Examinations in Music and Art. Large staff of Resident and Visiting Teachers.
MISS VEALS, Lady Principal.

ST. MONICA'S
Residential and Day School for Girls
170 Bloor St. West, Toronto

Thorough course in English, Languages, Music, Art, Elocution and Domestic Science, and Physical Culture. Prepares for University and Departmental Examinations. Kindergarten and Primary Departments.
Teachers, Specialists in each Department. A Home School. Extensive Grounds.
For Prospectus apply to **MISS PHILLPOTTS**, Lady Principal.

The Bishop Strachan School.
A Church School for Girls
President—The Lord Bishop of Toronto.

Reopens after Christmas Vacation for resident and day pupils on Monday, 12th January, 1903. Preparation for the Universities and also Kindergarten and Elementary Work. Apply for Calendar to **MISS ACRES**, Lady Principal, Wykeham Hall, Toronto.

J. C. SPENCE & SONS
ARTISTS IN STAINED GLASS
37b Bleury St., - Montreal
ESTABLISHED 1856.

Church work of all kinds. Memorial windows and leaded glass a specialty. Churches decorated. Texts and scrolls supplied.

STAINED GLASS
MEMORIAL :::
::: WINDOWS
BRASSES AND DECORATIONS
Castle & Son
20 UNIVERSITY ST., MONTREAL

MEMORIAL WINDOWS
Leaded Cathedral Glass
Quaint Windows for Dwellings
Robert McCausland, Limited
86 Wellington St. West, TORONTO

HARRINGTON'S TUBULAR
Chime Bells
Lighter in Weight, Sweeter in Tone, Cheaper in Price Than the ordinary bell
COVENTRY, ENG.
CASTLE & SON
20 University St. Montreal Agents



When writing to or purchasing from Advertisers mention **The Canadian Churchman**

JONES AND WILLIS
Church Furniture Manufacturers
Metal, Wood, Stone and Textile Fabrics.
STAINED GLASS ARTISTS
43 Great Russell Street, LONDON, ENG
Opposite British Museum.
Also at Birmingham and Liverpool

CHURCH BRASS WORK
Eagle and Rail Lecterns, Altar Vases, Ewers, Candlesticks, Altar Desks, Crosses, Vesper Lights, Altar Rails, Etc. Chandelier and Gas Fixtures.
CHADWICK BROTHERS
(Successors to J. A. Chadwick).
MANUFACTURERS
132 to 150 King William St., - HAMILTON, Ont.

LUXFER
Electro-glazed Church Windows
Decorative Glass.
Write for prices
LUXFER PRISM Co. Limited
100 King W. Toronto.

MEMORIALS AND DOMESTIC GLASS
DOMINION STAINED GLASS
EST. CO. 1881.
34 RICHMOND ST. E. TORONTO.
Tracky & Dech Front

Easter Brass Work.
Manufacturers of all kinds of Church Brass Work, Pulpits, Lecterns, Altar Rails, &c.
The KEITH & FITZSIMONS CO., Limited
111 King Street West, Toronto.

Church Brass Work
MEMORIAL BRASSES. RAILS VASES.
PRITCHARD ANDREWS CO OF OTTAWA LIMITED
133 SPADINA ST. OTTAWA

Ca

Vol. 29 J

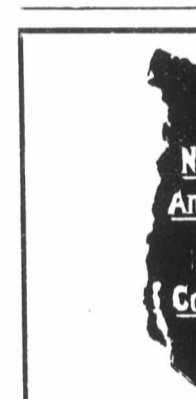


BERKINS
Mercer
348 Yonge

ANTHEMS FOR

Christ is Risen
O Death, Where is Thy Victory
The Lord Gave the Word
Holy Art Thou
(The celebrant's part)

Conquering Kings
O Worship the King
We have the largest stock
Send for sample
ASHDOWN'S, & Co.



"One foolish and a timely"

To procure a

North

would not on the coast any person for support timely one and the p while hard tune, it you to attain lege of be

The C Policies factory regarding may be its repre

North
Assi

Home Of
L. G. WM. Mc