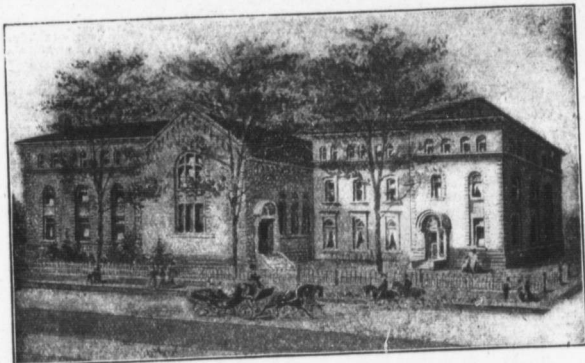


Barclay



TORONTO CONSERVATORY OF MUSIC

SIR J. A. BOYD, K.C.M.G., President.

DR. EDWARD FISHER, Musical Director.

Affiliated with the University of Toronto and Trinity University.

BEST EQUIPMENT AND FACILITIES; STRONGEST FACULTY IN CANADA

Artists' and Teachers' Graduating Courses, Scholarships, Diplomas, Certificates.

SEND FOR CALENDARS AND SYLLABUS, MAILED FREE

School of Literature and Expression—Mrs. INEZ NICHOLSON-CUTTER, Principal.

Reading, Recitation, Oratory, Voice Culture, Physical Culture, Rhetoric, English Literature, Orthoepy, Psychology, Pedagogy, Class and Private Lessons.

Jennett
H. Dept.

THE CANADIAN BANK OF COMMERCE

Established 1867

HEAD OFFICE, TORONTO

PAID-UP CAPITAL, \$8,000,000

REST, \$2,500,000

DIRECTORS:

HON. GEO. A. COX, President.	ROBT. KILGOUR, Vice-President.
W. B. HAMILTON, JOHN HOSKIN, K.C., LL.D.	M. LEGGAT, JAS. CRATHERN, J. W. FLAVELLE.
HON. L. MELVIN JONES, A. KINGMAN.	FREDERIC NICHOLLS.
B. E. WALKER, General Manager.	J. H. PLUMMER, Asst. Gen'l Manager.
	A. H. IRELAND, Chief Inspector and Superintendent of Branches.

LONDON OFFICE: 60 Lombard St., E.C.

BRANCHES OF THE BANK IN CANADA:

ONTARIO

AYR.
BARRIE.
BELLEVILLE.
BERLIN.
BLENHEIM.
BRANTFORD.
CAYUGA.
CHATHAM.
COLLINGWOOD.
DRESDEN.

DUNDAS.
DUNNVILLE.
FORT FRANCES.
GALT.
GODERICH.
GUELPH.
HAMILTON.
LONDON.
ORANGEVILLE.
OTTAWA.

PARIS.
PARKHILL.
PETERBORO.
PORT PERRY.
ST. CATHARINES.
SARNIA.
SAULT STE. MARIE.
SEAFORTH
SIMCOE.
STRATFORD.

STRATHROY
TORONTO (8 offices).
TORONTO JUNCT'
WALKERTON.
WALKERVILLE.
WATERLOO.
WIARTON.
WINDSOR.
WOODSTOCK.

QUEBEC MANITOBA AND NORTH WEST TERRITORIES YUKON TERRITORY
 MONTREAL. CALGARY. CARMAN. DAUPHIN. EDMONTON. ELGIN. DAWSON.
 GILBERT PLAINS. GRAND VIEW. MEDICINE HAT. MOOSSOMIN. WHITE HORSE,
 NEEPAWA. SWAN RIVER. TREHERNE. WINNIPEG.

BRITISH COLUMBIA

ATLIN. CRANBROOK. FERNIE. GREENWOOD. KAMLOOPS. LADYSMITH. NANAIMO.
 NELSON. NEW WESTMINSTER. SANDON. VANCOUVER. VICTORIA.

NOVA SCOTIA—SYDNEY.

IN THE UNITED STATES:

NEW YORK. SAN FRANCISCO, CAL. PORTLAND, ORE. SEATTLE, WASH.
 SKAGWAY, ALASKA.