

Phoenix Insurance Comp'y

OF HARTFORD, CONN.

ESTABLISHED 1854.

Canada Branch:

GERALD E. HART, General Manager, Montreal.

Paid-up Capital, \$2,000,000 00
 Surplus, 1,801,835 39
 Assets, 5,305,004 23
 Income, 2,778,050 00

A general Fire Insurance business transacted at lowest current rates.

JAS. B. BOUSTEAD, } District Agent, Toronto.
 HERBERT H. MAUGHAN }

AMERICAN TRUST COMPANY.

173 BROADWAY, NEW YORK.
 67 YONGE STREET, TORONTO, ONT.

AUTHORIZED CAPITAL, - \$1,000,000.

THE AMERICAN TRUST COMPANY has recently authorized an increase of its Capital Stock to One Million Dollars, and issues Three Classes of Stock:

Ordinary Instalment Stock,
 Regular Full Paid Stock, and
 8 per Cent. Guaranteed Preferred Stock.

The different classes of stock meet the wants of different investors. This issue of Instalment Stock offers an exceptional opportunity for persons desiring to lay aside a few dollars each month, where they can realize Eight per Cent. on their money. It will pay you to investigate this Instalment Stock. Write for pamphlet and full information.

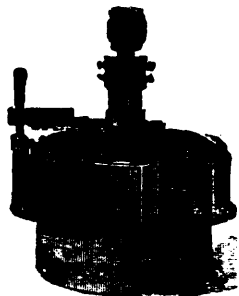
WILLIAM H. MILLER,
 TORONTO, ONT.

WILLIAM KENNEDY & SONS,

OWEN SOUND, ONT.

MFRS OF THE

"New American"
 TURBINE
 Heavy Mill Work.



Water Power Pumping Machinery for Domestic and Fire purposes.

Plans, Estimates, and Superintendence for Construction of Municipal Water Works and Improvement of Water Powers.

DOMINION PAPER BOX COMPANY,

MANUFACTURERS OF

HARDWARE FOLDING BOXES,

CONFECTIONERS' FOLDING BOXES.

Packages specially adapted for all classes of goods.
 74 and 76 King St. West, Toronto.

JOHN J. GARTSHORE,

49 Front St. W., Toronto. Telephone 616.

Railway and Tramway Equipment.

New and Second hand Steel & Iron RAILS.
 Wrought and Cast Scrap Iron by Carload or Cargo.
 Send for prices.

—THE—

Canadian Mutual Loan and Investment Co.

HEAD OFFICE:

51 Yonge Street, - Toronto, Canada.

The cost of a share is \$1 membership fee, and 60 cents monthly dues. Maturity value of a share is \$100, and estimated limit of maturity is 7 years. Monthly payments of \$3 will yield \$500 on maturity of shares. A saving of 20 cents a day invested here will insure \$1,000 in 7 years.

TORONTO PRICES CURRENT.

(CONTINUED.)

Canned Fruits—Cases, 2 doz. each.

APPLES—3's,	per doz.	\$1 25
" Gallons,	"	3 00
BLUEBERRIES—2's, Loggie's	"	1 25
RASPBERRIES—2's, Lakeport	"	2 50
STRAWBERRIES—2's, Coulter's	"	2 40
PEARS—2's, Bartlett, Delhi	"	2 00
" 3's, Bartlett, Boulter's	"	2 75
PEACHES—2's, Beaver, Yellow	"	2 85
" 2's, Victor, Yellow	"	2 85
" 3's, Victor, Yellow	"	2 85
" 3's, Beaver, Yellow	"	2 85
" 3's, Pie	"	1 85
QUINCES—2's, Boulter's	"	2 10
PLUMS—2's, Green Gage, Nelles'	"	1 80 2 10

Canned Vegetables—Cases, 2 / ex. each.

BEANS—2's, Stringless, Boulter's	per doz.	\$0 85 0 95
" 2's, White Wax, Lakeport	"	1 00
" 3's, Boston Baked, Delhi	"	1 45
CORN—3's, Lion, Boulter's	"	1 50
" 2's,	"	1 20
" 2's, Canada First, Aylmer	"	1 15
" 2's, Epicure, Delhi	"	1 15
PEAS—Marrowfat, 2's, Delhi	"	1 30
" Champion of E., 2's, Aylmer	"	1 30
" Standard, 2's	"	1 25
" Ontario Sweet Wrinkled	"	1 30
PUMPKINS—3's, Aylmer	"	1 00
" 3's, Delhi	"	1 00
" 3's, Lakeport	"	1 10
TOMATOES—Crown, 3's	"	1 45 1 50
" Ice Castle, 3's	"	1 45 1 50
" Beaver, 3's	"	1 45 1 50
TOMATO CATSUP—2's	"	0 75

Fish, Fowl, Meats—Cases.

MACKEREL—Myrick's 4 doz	per doz	\$1 45
" Empire, 4 doz	"	1 40
SALMON—LYNX, 4 doz	"	1 40
" Horse Shoe, 4 doz, 10 case lots	"	1 50
" " " in less	"	1 55
" White, 4 doz	"	1 25
" B. A. Salmon	"	1 45
SARDINES—Martiny's	per tin	10 1/2
" 2's, Chancellerie, 100 tins	"	0 10
" 2's, Alberts, 100 tins	"	0 11
" 2's, Alberts, 100 tins	"	0 18
" 2's, Rouillard, 100 tins	"	0 17
CHICKEN—Boneless, Aylmer, 12oz., 2 doz. per doz	"	2 30
TURKEY—Boneless, Aylmer, 12oz., 2 doz.	"	2 35
DUCK—Boneless, 1's, 2 doz.	"	2 35
LUNCHEON TONGUE—1's, 2 doz.	"	2 65
PIGS' FEET—1's, 2 doz.	"	2 40
CORNER BEEF—Clark's, 1's, 2 doz.	"	1 50
" " Clark's, 2's, 1 doz.	"	2 00
" " Clark's, 1's, 1 doz.	"	18 50
OX TONGUE—Clark's, 2's, 1 doz.	"	7 50
LUNCHEON TONGUE—Clark's, 2's, 1 doz.	"	5 50
SOUP—Clark's, 1's, Ox Tail, 2 doz.	"	1 50
" Clark's, 1's, Chicken, 2 doz.	"	1 50
FISH—Herring, scaled	"	0 18 0 20
" Dry Cod, per 100 lbs.	"	5 75 6 50

Sawn Lumber, Inspected, B.M.

Clear pine, 1 1/2 in. or over, per M	\$33 00	25 00
Pickings, 1 1/2 in. or over	28 00	25 00
Clear & pickings, 1 in	28 00	25 00
Do. do. 1 1/2 and over	30 00	25 00
Flooring, 1 1/2 & 1 3/4 in	14 00	16 00
Dressing	15 00	16 00
Ship, culls stks & sids	19 00	19 00
Joists and Scantling	19 50	18 50
Clapboards, dressed	19 50	00 00
Shingles, XXX, 16 in.	9 25	9 40
" XX	1 40	1 80
Lath	1 75	1 85
Spruce	10 00	18 00
Hemlock	00 00	11 00
Tamarac	12 00	14 00

Hard Woods—P. M. ft. B.M.

Birch, No. 1 and 2	\$17 00	20 00
Maple,	15 00	18 00
Cherry,	60 00	65 00
Ash, white,	24 00	28 00
" black,	16 00	18 00
Elm, soft	11 00	12 00
" rock	18 00	00 00
Oak, white, No. 1 and 2	25 00	30 00
" red or grey	20 00	25 00
Balm of Gilead, No. 1 & 2	13 00	15 00
Chestnut	25 00	30 00
Walnut in. No. 1 & 2	85 00	100 00
Butternut	30 00	40 00
Hickory, No. 1 & 2	28 00	00 00
Basswood	16 00	18 00
Whitewood,	25 00	40 00

Fuel, &c.

Coal, Hard, Egg	\$ 5 50	0 00
" " Stove	5 50	0 00
" " Nut	5 50	0 00
" Soft Blossburg	5 50	0 00
" Briarhill best	5 50	0 00
" Grate	5 25	0 00
Wood, Hard, best uncut	5 50	0 00
" " 2nd quality, uncut	4 50	0 00
" " best cut and split	6 00	0 00
" " 2nd quality cut and split	5 00	0 00
" Pine, uncut	4 50	0 00
" " cut and split	5 00	0 00
" slabs	3 50	0 00

LIVERPOOL PRICES.

May 21, 1891.

Wheat, Spring	p. d.	0 0
Kansas Winter	"	8 7
No. 1 Cal.	"	8 6
Corn	"	5 34
Peas	"	6 4
Lard	"	33 0
Pork	"	52 6
Bacon, long clear	"	51 0
" short clear	"	31 0
Tallow	"	27 6
Cheese	"	59 0

Railway Companies.

INTERCOLONIAL RAILWAY OF CANADA.

—THE—

Direct Route between the West and

All points on the LOWER ST. LAWRENCE and BAIE DES CHALEURS, PROVINCE of QUEBEC; also for NEW BRUNSWICK, NOVA SCOTIA, PRINCE EDWARD, CAPE BRETON ISLANDS,

NEWFOUNDLAND, AND ST. PIERRE.

Express trains leave Montreal and Halifax daily (Sunday excepted), and run through, without change between these points, in 28 hours and 55 minutes. The through express train cars of the Intercolonial Railway are brilliantly lighted by electricity, and heated by steam from the locomotive; thus greatly increasing the comfort and safety of travellers. New and elegant buffet, sleeping and day cars are run on all through express trains.

CANADIAN EUROPEAN MAIL AND PASSENGER ROUTE.

Passengers for Great Britain or the Continent leaving Montreal on Friday Morning will join outward mail steamer at Halifax on Saturday. The attention of shippers is directed to the superior facilities offered by this route for the transport of flour and general merchandise intended for the Eastern Provinces and Newfoundland; also for shipments of grain and produce intended for the European market. Tickets may be obtained and all information about the route, also freight and passenger rates on application to

N. WEATHERSTON,
 Western Freight and Passenger Agent,
 28 Rossin House Block, York St., Toronto.

D. POTTINGER,

Chief Superintendent.
 Railway Office, Moncton, N.B.,
 24th Nov., 1890.

DAMAGE BY FIRE APPRAISED.

ALEX. BRUCE,

Builder and Contractor,

GUELPH.

THE MERCANTILE AGENCY

The oldest and most trustworthy medium for information as to the history and position of traders in the United States and Canada. Branch Offices in TORONTO, MONTREAL, HALIFAX, HAMILTON, LONDON, ST. JOHN, WINNIPEG, VICTORIA, B. C., and in one hundred and twenty-six cities of the United States & Europe. Reference Books issued in January, March, July and September, each year.

DUN, WIMAN & CO.

OFFICE THE Stationery MONETARY TIMES PRINTING OFFICE

IS THOROUGHLY EQUIPPED WITH COMPETENT WORKMEN AND THE BEST MACHINERY FOR THE SUPPLYING OF TASTEFUL TYPOGRAPHY IN

Letter Heads Bill Heads Memorandums
 Note Books Drafts Check Books
 Catalogues of every description

ROBERT BEATY & CO.

61 KING ST. EAST,

(Members of Toronto Stock Exchange).

Bankers and Brokers,

Buy and sell Stocks, Bonds, &c., on Commission, for Cash or on Margin. American Currency and Exchange bought and sold.

Insurance.

Provident Savings Life Assurance Society OF NEW YORK.

SHEPARD HOMANS, PRESIDENT.

WILLIAM B. STEVENS, SECRETARY.

Agents wanted in unrepresented districts—this Company's plans are very attractive and easily worked. Liberal contracts will be given to experienced agents, or good business men who want to engage in life insurance.

Apply to R. H. MATSON, General Manager for Canada, 37 YONGE STREET, TORONTO.