

## CHRISTMAS FARE.

MENUS AND RECIPES FOR THE SEASON.  
DINNERS FOR SIX TO EIGHT PERSONS.

- I.  
Clear Game Soup.  
Boiled Turbot and Lobster Sauce.  
Braised Turkey. Roast Sirloin of Beef.  
Mashed Potatoes. Brussels Sprouts. Stewed Celery.  
Mince Pies. Plum Pudding. Cheese Straws.
- II.  
Oxtail Soup.  
Codfish and Oyster Sauce.  
Pork Cutlets, Lentil Sauce. Beef Olives.  
Roast Turkey.  
Potato Croquettes. Jerusalem Artichokes. Broccoli.  
Mince Pies. Meringues. Plum Pudding. Charlotte Russe.  
Cheese. Celery.

- III.  
Oysters.  
Clear Turtle.  
Boiled Brill, Tartare Sauce.  
Braised Turkey. Chestnut Sauce.  
Roast Fillet of Beef. Fried Potatoes.  
Endive Salad.  
Cheese Soufflé.  
Plum Pudding. Mince Pies. Coffee Ice Pudding.

## DINNERS FOR TEN TO TWELVE.

- I.  
Grouse Soup.  
John Dory. Anchovy Sauce. Lobster Rissoles.  
Chicken Curry.  
Roast Hare of Mutton. Boiled Turkey and Tongue.  
Mashed Potatoes. Spinach.  
Wild Ducks. Orange Sauce.  
Plum Pudding. Mince Pies. Apples with Rice. Pine Apple Jelly.  
Cheese, Celery, &c.

- II.  
White Soup (à la reine).  
Fried Fillets of Sole and Smelts.  
Escalopes of Rabbit, purée of game. Fillets of Beef.  
Braised Turkey.  
Roast Saddle of Mutton.  
Fried Potatoes. Brussels Sprouts.  
Roast Pheasants. Watercress Salad.  
Macaroni Cheese.  
Plum Pudding. Mince Pies. Punch Jelly. Vanilla Cream.

- III.  
Oysters.  
Clear Game Soup.  
Boiled Turbot, Dutch Sauce.  
Croquettes of Lobster.  
Larks in cases. Grenadins of Beef.  
Braised Turkey. Truffle Sauce.  
Roast Woodcocks and Snipes.  
Russian Salad. Cheese Fondue.  
Plum Pudding. Chateaufort of Oranges.  
Mince Pies. Small Nougats.

## DINNERS FOR FOURTEEN TO SIXTEEN.

- I.  
Clear Soup with Custard.  
Baked Turbot. Wine Sauce.  
Fried Fillets of Sole.  
Boudin of Veal with Truffles. Fillets of Beef with Vegetables.  
Boiled Turkey. Onion Sauce.  
Boiled Ham.  
Roast Wild Duck.  
Russian Salad.  
Plum Pudding. Mince Pies.  
Nougat Jelly. Chocolate Eclairs.

- II.  
Oyster Soup. Vermicelli Soup.  
Codfish and Caper Sauce.  
Lobster Croquettes.  
Fillet of Beef with Olives. Small Chateaufort of Game.  
Pheasant of Veal with Spinach.  
Roast Turkey and Sausages.  
Broccoli au Gratin. Stuffed Tomatoes.  
Plum Pudding. Mince Pies.  
Stewed Pears. Whipped Cream. Pine Apple Toasts.

- III.  
Clear Celery Soup. Chestnut Soup.  
Boudins of Whiting.  
Red Mullet. Wine Sauce.  
Chicken with Tartarum. Mutton Cutlets with Carrots.  
Braised Turkey.  
Aspic of Lobster.  
Scotch Woodcock. Cheese Tartlets.  
Plum Pudding. Mince Pies.  
Small Babas with Rum.  
Composite of Oranges.

## DINNERS FOR EIGHTEEN TO TWENTY.

- I.  
Clear Oxtail Soup. Lobster Soup.  
Brill, Shrimp Sauce.  
Stewed Red Mullet.  
Oyster Parties. Mutton Cutlets and Spinach. Salmon of Game.  
Braised Beef.  
Roast Turkey and Sausages.  
Mashed Potatoes. Brussels Sprouts. Seakale.  
Pheasants. Woodcocks.  
Cheese Hamquins.  
Plum Pudding.  
Mince Pies. Nougats with Cream.  
Charlotte Russe. Maraschino Jelly.

- II.  
Palestine Soup. Gravy Soup.  
Boiled Codfish. Oyster Sauce. Fried Smelts.  
Mutton Cutlets. Tomato Sauce. Chicken Croquettes.  
Salmon of Partridges. Beef Olives.  
Boiled Turkey. Celery Sauce.  
Roast Sirloin of Beef. Mashed Potatoes.  
Broccoli. Brussels Sprouts.  
Roast Pheasants.  
Boudins on Toast. Chèvre Toast.  
Plum Pudding. Tipsey Cake. Orange Jelly.  
Pineapple Cream. Mince Pies. Meringues.  
Cheese. Butter. Celery, &c.

- III.  
Clear Soup with Quelettes. Hare Soup.  
Turbot, Tartare Sauce. Baked John Dory.  
Kromesky of Game. Sweetbread (à la Financière).  
Salmon of Chickens. Grenadins of Veni.  
Fillet of Beef with Macaroni.  
Roast Turkey Truffled. Bavarian Endive Salad.  
Brocc. Cream Sauce. Cardoons and Marrow.  
Stuffed Eggs. Cheese Soufflé.  
Plum Pudding.  
Nougats with Cream.  
Mince Pies. Tipsey Puddings.  
Orange Tartlets. Meringues.

## OUR CHESS COLUMN.

Solutions to Problems sent in by Correspondents will be duly acknowledged.

## TO CORRESPONDENTS.

J. W. S., Montreal.—Paper, &c., received. Thanks. Student, Montreal.—Correct solution received of Problem No. 252.

T. S., St. Andrew's, Manitoba.—Correct solution received of Problem No. 251, and also, of Problems for Young Players No. 245.

E. H.—Solution received of Problem for Young Players No. 252. Correct.

We have been informed that at the recent meeting of the chessplayers of Ontario, four were present from Toronto, one from Hamilton, three from Seaforth, and one from Brantford. About twenty players of the Guelph Chess Club were also in attendance, and consequently chess was exceedingly well represented in the sister Province.

The formation of an Ontario Chess Association was brought forward for consideration and agreed to, and the following officers were elected:

President—J. H. Gordon, Toronto.  
Vice-President—R. R. Baldwin, Guelph.  
Treasurer—A. T. Kerr, Guelph.  
Secretary—W. A. Littlejohn, Toronto.

Two matches were played during the meeting, one between the players of Toronto and Seaforth, in which the former succeeded in winning every game, and the other, which was a mixed game, gave at its close the following results:

Baldwin (Guelph) 2	Adamson (Toronto) 0
Wallace (Brantford) 2	Hirschberg (Toronto) 0
Lee (Brantford) 1	Littlejohn (Toronto) 1
5	1

Mr. H. Hall, a gentleman of England who is travelling through Canada at the present time for the purpose of making himself acquainted with the resources, &c., of the country, visited the Montreal Chess Club on Tuesday evening, the 15th inst.

Having privately intimated to the Secretary, Mr. J. Henderson, his desire to meet the chessplayers of the city, nearly the whole of the members of the club were in attendance at the Gymnasium, in Mansfield street. Mr. Hall, who has for many years been connected with the chessplayers of London, expressed a desire to try the skill of our Montreal players, and, in consequence, a gentleman present contested a couple of games with him, and managed in each encounter to maintain the credit of the club. In the course of conversation after the cessation of hostilities, Mr. Hall, whose genial manner was much appreciated by those present, said that he was gratified to see so large a club in existence in our city, and acknowledged also that the play he had witnessed during the evening was considerably beyond what he had anticipated.

We learn that a Chess Column is about to appear in one of the Quebec papers. We are glad of this, as the royal game has many lovers in the Ancient Capital. It is also a sign of the growth of interest in the game in the Province.

It has always been the fashion to speak of Correspondence Chess as a very dull entertainment for those engaged in it, and of the record of games so played as destitute of interest for the general reader. In nine cases out of ten the reproach is not altogether undeserved, but the famous match between London and Edinburgh, which led to the revival of an old opening, since known as the Scotch Gambit, is a notable exception, and to this we may now add the match between England and America. This match was begun two years ago, and its progress has been marked by several noteworthy incidents. Some months ago, Mr. French, of Washington, closed one of the games he was conducting with the announcement of a forced win in the extraordinary number of fifty-three moves: a few weeks later, Mrs. Gilbert, of Hartford, Connecticut, opposed to Mr. Goody, one of the strongest of the English team, announced a mate in thirty moves, and since then, informed her adversary that in the second game between them he would be mated against the best play in twenty-one moves!

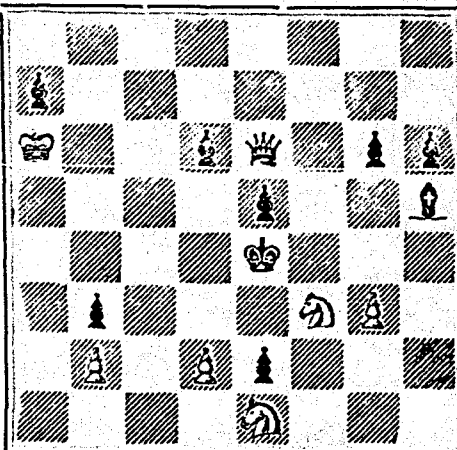
Mrs. Gilbert has more than once before displayed a very remarkable aptitude for chess analysis, but her last exploits are unparalleled in the history of chess by correspondence.—Illustrated London News.

## PROBLEM No. 250.

By E. N. Frankenstein.

(From English Chess Problems.)

## BLACK.



## WHITE.

White to play and mate in three moves.

## GAME 384TH.

## CHESS IN NEW YORK.

Played in the Handicap Tournament of the Manhattan Chess Club, between Messrs. Grutter and Mackenzie, the latter giving the odds of Pawn and move.

Remove Black's K B P.

WHITE.—(Mr. G.)	BLACK.—(Mr. M.)
1. P to K4	1. P to Q3
2. P to Q4	2. Kt to Q3
3. Kt to K B3	3. B to K Kt5
4. B to K3	4. Kt to K B3
5. Q Kt to Q2	5. P to K2
6. P to Q B3	6. P to K Kt3
7. B to Q3	7. B takes Kt
8. P to K R3	8. B takes K R
9. Q takes B	9. B to K Kt2
10. Kt to Q Kt3 (a)	10. Castles K R
11. B to K Kt5	11. P to K R3
12. B takes Kt	12. B takes B (b)
13. Q to K Kt4	13. K to R2

14. P to Q5  
15. P to K Kt3  
16. P to K R4  
17. Q to K2  
18. Castles Q R  
19. Q R to K B sq  
20. P to K B4  
21. Q to K Kt2  
22. R takes P  
23. P takes B  
24. P takes Kt  
25. R to K R4 (d)  
26. Q to Q2  
27. B to K2  
28. B takes R  
29. Q to K3  
30. Kt to Q2  
31. K to Q sq (c)  
32. K to K2  
33. B to K R sq  
34. Q to K R3  
35. Q to Q6 (ch)  
36. Q to R3 (ch)  
37. Q to Q7 (ch)

14. Kt to Q sq  
15. P to Q B4  
16. P to K R4  
17. Kt to K B2  
18. Kt to K R3  
19. Q to Q2  
20. Q to K Kt5  
21. P takes B P  
22. B to K Kt4 (c)  
23. R takes R  
24. R to B6  
25. Q to Kt4 (ch)  
26. Q takes K Kt sq  
27. Q takes R  
28. R to K B sq  
29. Q to K Kt6  
30. P to K R5  
31. P to R6  
32. P to R7  
33. Q to K Kt8  
34. Q takes B  
35. K takes P  
36. K to Kt2  
37. R to B2 and wins.

## NOTES.

(a) Thus far White has managed the opening well and carefully, but this move of the Kt is not to be commended; it would have been more to the purpose to have played him to K B and then to Kt3.

(b) R takes B is stronger.

(c) Undoubtedly his best play under the circumstances, as it gives him two strong passed Pawns on the King's side.

(d) Inferior, we think, to B K2.

(e) The helplessness of White's pieces is somewhat curious, for they are powerless to prevent the victorious advance of the Black K R P.

## SOLUTIONS

Solution of Problem No. 254

WHITE.	BLACK.
1. R to R6	1. Q (checks)
2. K takes Q	2. Anything.
3. Mates acc.	

Black has other defences.

Solution of Problem for Young Players No. 252

White.	Black.
1. B to Q Kt7	1. P moves
2. Kt mates	

PROBLEMS FOR YOUNG PLAYERS, No. 255.

By Thomas Sinclair, Manitoba.

WHITE.	BLACK.
Kt at Q Kt5	Kt at Q4
R at K R4	Pawns at Q2 and K
B at Q6	Kt4
Kt at K Kt6	
Pawns at K B5	
and Q Kt6	

White to play and mate in two moves.

**HUSBANDS!  
WIVES!!  
SAVE**

Money by Buying BOOTS and SHOES at

**RONAYNE'S,**

192 & 194 St. Joseph Street,

CHABOUILLEZ SQUARE.



## Lachine and Cornwall Canals.

## NOTICE TO CONTRACTORS.

SEALED TENDERS addressed to the undersigned, and endorsed "Tenders for Timber for Lock Gates," will be received at this office until the arrival of the Eastern and Western Mails on MONDAY, the 29th day of DECEMBER instant, for the furnishing and delivering, on or before the 1st day of JUNE, 1880, of Pine Timber, sawn to the dimensions required, for the construction of (a) the Upper New Locks on the Lachine Canal, and for the New Locks on the Cornwall Canal.

The timber must be of the quality described, and of the dimensions stated on a printed bill, which will be supplied on application, personally or by letter, at this office, where Forms of Tender can also be obtained.

No payment will be made on the timber until it has been delivered at the place required on the respective Canals, nor until it has been examined and approved of by an officer detailed for that service.

To each Tender must be attached the names of two responsible and solvent persons, residents of the Dominion, willing to become sureties for the carrying out of the conditions stated in the Contract.

This Department does not, however, bind itself to accept the lowest or any Tender.

By order,

F. BRAUN, Secretary.

Department of Railways and Canals,  
Ottawa, 13th December, 1879.

\$777 A Month and expenses guaranteed to Agents  
\$777 Outfit free. SHAW & CO., AUGUSTA, MAINE.

**British American  
BANK NOTE COMPANY,**

MONTREAL.

Incorporated by Letters Patent.

Capital \$100,000.

**General Engravers & Printers**

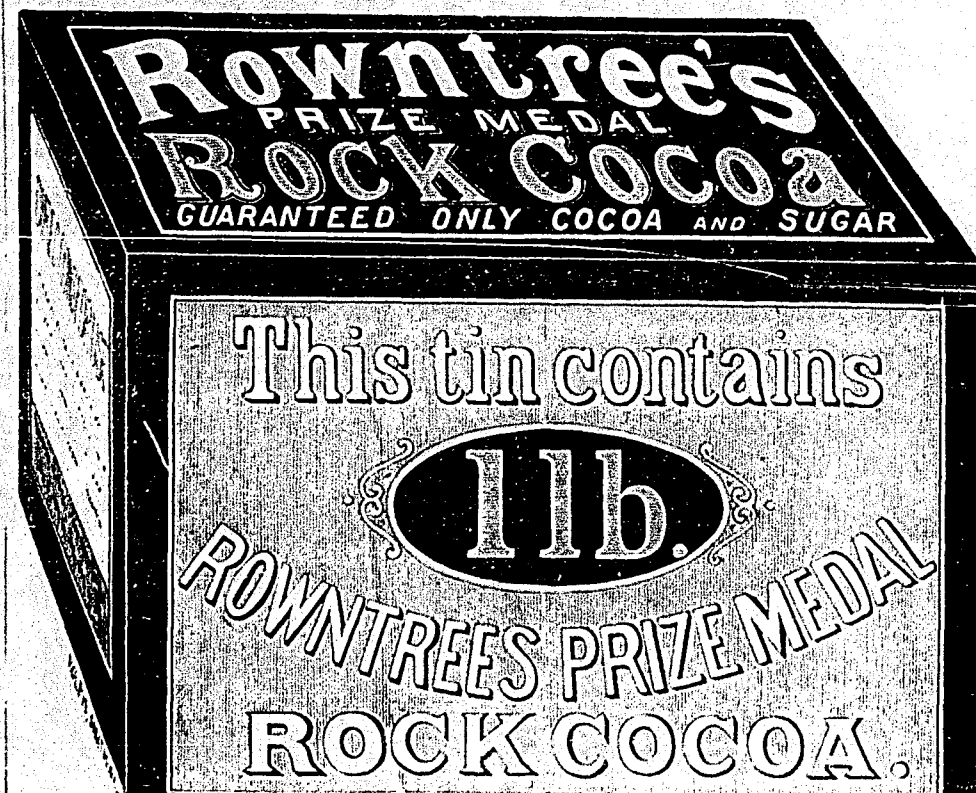
Bank Notes, Bonds,  
Postage, Bill & Law Stamps,  
Revenue Stamps,  
Bills of Exchange,  
DRAFTS, DEPOSIT RECEIPTS,  
Promissory Notes, &c., &c.,  
Executed in the Best Style of Steel Plate Engraving.

Portraits a Specialty.

G. B. BURLAND,

President, & Manager.

\$777 A YEAR and expenses to Agents. Outfit free.  
Address: P.O. VICKERY, Augusta, Maine.



This Cocoa contains no Starch, Farina, Arrowroot or any other foreign ingredient used by manufacturers of Homoeopathic and other prepared Cocos. Dr. J. Baker Edwards, Government Analyst, certifies to its being a pure cocoa, and to it containing nothing but Cocoa and Sugar. To invalids it is invaluable, and is especially recommended by physicians to all as a beverage that will tone and stimulate the most delicate stomach, and in nourishing and strengthening qualities is far ahead of any other preparation of the kind.

The above cut is a fac-simile of the original package containing one pound net weight. It is also packed loose in 14 lb. tins. Consumers desirous of receiving the genuine should inquire for the one pound tin, as it has been ascertained that some unscrupulous dealers are in the habit of selling from one of Rowntree's 14 lbs. tins a quality of Rock Cocoa much inferior.

WM. JOHNSTON & CO.,  
77 St. James Street,  
Sole Agents, Montreal.