



PUBLISHED
SEMI-MONTHLY.

The only Newspaper devoted to the Lumber and Timber Industries published in Canada

SUBSCRIPTION
\$2.00 PER ANNUM

VOL. 5.

PETERBOROUGH, ONT., JANUARY 15, 1885.

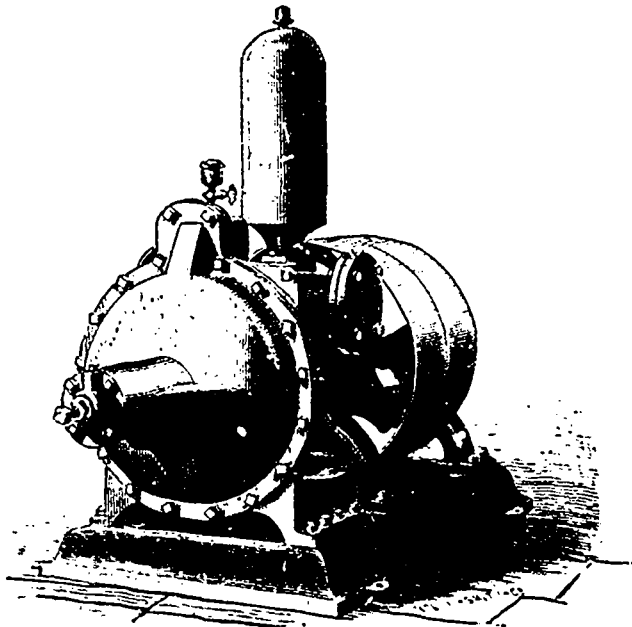
NO. 2.

Central Iron Works

SIMCOE STREET

PETERBOROUGH, Ontario.

WM. H. LAW, PROP'R.



PROTECTION FROM FIRE

An Improved Rotary Piston Force Pump.

No.	Diameter of Pipes.		No. of Revolutions.	Capacity per minute at table speed.	Price.
	Suction.	Discharge.			
2	2½ in.	2 inch.	250	125	\$100
3	4 "	3 "	250	250	150
4	5 "	4 "	250	400	225

SEND FOR CIRCULAR.

MANUFACTURER OF

Engines, Boilers, Pumps, Saw Mill Machinery

STEAMBOAT PROPELLERS AND ENGINES.

C A S T I N G S

For Architectural Works &C.

IRON ROOFING AND BRIDGES,

AND ENGINEERING WORK IN GENERAL.



LUMBERMEN'S PRINTING AND STATIONERY.

We can supply anything in the line of **BOOKS, BLANKS** or **STATIONERY** for Lumber Shanties and Offices at City Prices, and everything necessary to a complete office outfit. All **PRINTING** done in the Highest Style of the Art, and at Lowest Living Prices. **BOOK-BINDING** of every description got up in a Neat and Superior manner. **ACCOUNT BOOKS** Ruled and Bound to any desired pattern.

Address: "THE CANADA LUMBERMAN," Peterborough, Ont.