



The Gurney-Oxford Enthusiast

The housewife who owns a Gurney-Oxford—who has daily experience with it—who knows the way it works—the economy and efficiency of it—is a Gurney-Oxford Enthusiast.

The Gurney-Oxford Range is the sum total of 70 years experience in stove construction. It is a big, up-standing, handsome stove, that works constantly and unfailingly for its owner's satisfaction. It stands guard over her interests, conserving her

time and energy, effecting a daily saving in coal, adding to the household economy and increasing the pleasure which comes from a smooth-running and well-ordered household.

That's why she enthusiastically recommends the Gurney-Oxford whenever the question comes up.

She wants her friends to learn, what she knows to be a fact, that a Gurney-Oxford Range is a good housewife's most valuable and cherished possession.

The Gurney Foundry Co., Limited

TORONTO - CANADA

MONTREAL - HAMILTON - WINNIPEG - CALGARY - VANCOUVER

(13)

RAW FURS

Are you a trapper? Are you a dealer? Are you seeking a reliable firm to ship to? Many thousands of shippers say we give best returns, good reasons—we pay as we quote, give a square grade and send your money as quick as the return mail can bring it to you. We post you reliably.

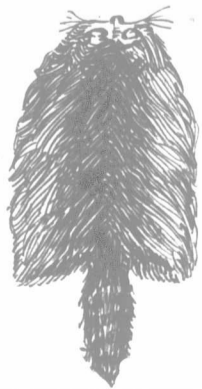
No Commissions. No Express Charges.
Write at once for price list, tags, envelopes, invoices, etc.

BENJAMIN DORMAN, Inc.

RAW FURS, GINSENG, GOLDEN SEAL

147 West 24th Street, New York. (Mention this paper.)

References: Greenwich Bank, N. Y. East River National Bank, N. Y.



British Columbia Farm Land

IN purchasing a farm it is important that you consider SOIL, CLIMATE, LOCATION and SHIPPING FACILITIES. You will find all these combined in the MALAKWA DISTRICT, which is on the main line of the C. P. R., 35 miles west of Revelstoke, or 300 miles west of Calgary. The soil has been pronounced by experts to be the best CELERY AND CABBAGE SOIL IN BRITISH COLUMBIA.

We have two 20-acre blocks, all under cultivation, for sale at \$200 and \$250 per acre. Terms.—One-third cash, balance one, two and three years at 7%. This land is capable of producing as high as \$1,000 per acre each year. Write for full particulars.

J. M. HUMPHREY & CO., Limited, Calgary, Alta.