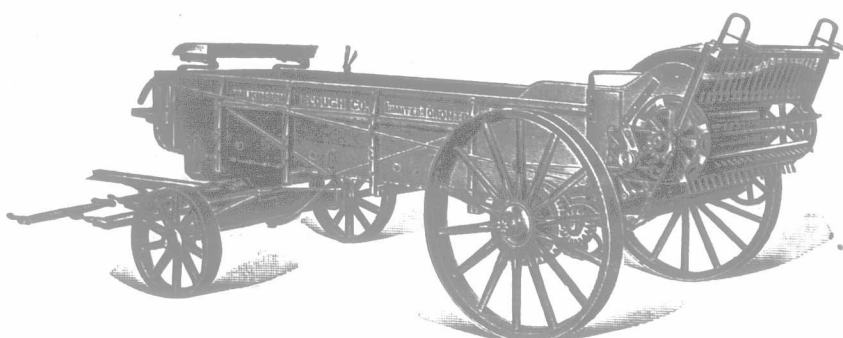


**GREAT WESTERN ENDLESS APRON MANURE SPREADERS**



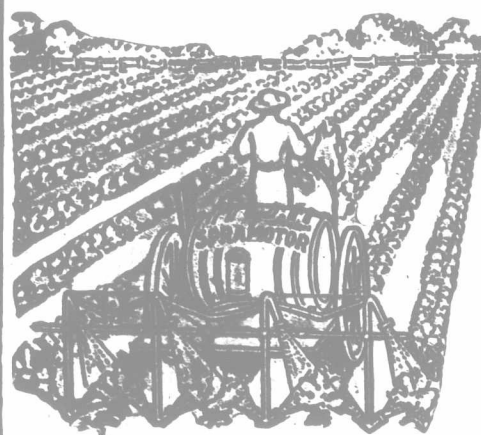
Simplicity, strength and durability combined, make easy operation and excellent results a certainty.

REMEMBER: The wheels tracking; the endless apron; the non-bunchable rake; the large capacity, 70 bus., and our guarantee to give satisfaction or no sale.

Write for Catalogue. Dept. "L."

THE WILKINSON PLOUGH CO., Limited, - Toronto, Canada.

**Did the Blight Spoil Your Potatoes Last Year?**



Agents Wanted

**The Sparamotor**

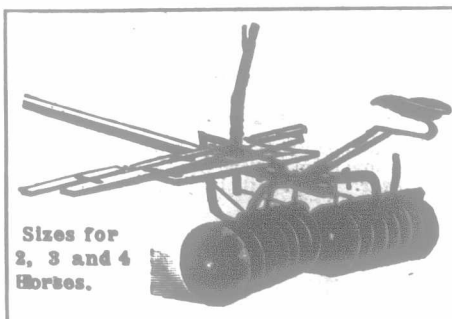
will for \$1.00 per acre, protect the coming season's crop from BLIGHT, BUGS and ROT, and increase the yield over one-half.

The machine illustrated will spray 20 acres a day, 4 rows at a time, above and below, by driving the horse between the rows. All the work is done by the horse.

The machine can be worked by hand for stationary work, such as large trees, whitewashing, etc., kill the wild mustard plant, and greatly increase the yield of grain. Write for Booklet "B;" it's free.

**SPRAMOTOR CO.**  
68-79 King St. LONDON, Can.  
107-109 Erie St. BUFFALO, N.Y.

**The BISSELL DISK HARROW possesses features**



Sizes for 2, 3 and 4 Horses.

Of unusual merit. The shape is right. A plow mouldboard must have the right turn, or it is useless. This is true of the Harrow Disk Plate. The plates on the Bissell Disks have the correct shape, or concave. They do the best work with the least horse power. Where old-style plates only scrape the surface and set the soil on edge, the Bissell shears, cuts turns and completely pulverizes the soil. Years of experience in the Disk Harrow trade have placed the Bissell far ahead of all competitors.

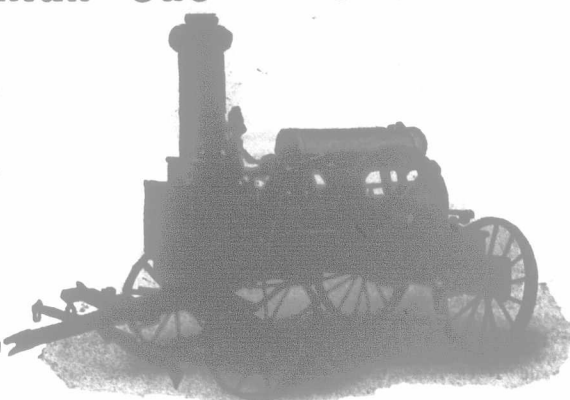
None genuine without the name "BISSELL."

Send us your address on a postal card; we will cheerfully give you further information. Address:

T. E. BISSELL, MANUFACTURER, ELORA, ONTARIO, DEPT. W.

**McLachlan Gas and Gasoline Engines**

Portable  
Stationary  
Traction  
Marine  
Engines



Complete  
Gasoline  
Threshing  
Outfits a  
Specialty.

10 to 40 h.-p. Threshing Engine.

WRITE FOR CATALOGUE AND PARTICULARS TO

**The McLachlan Gasoline Engine Co., Limited**

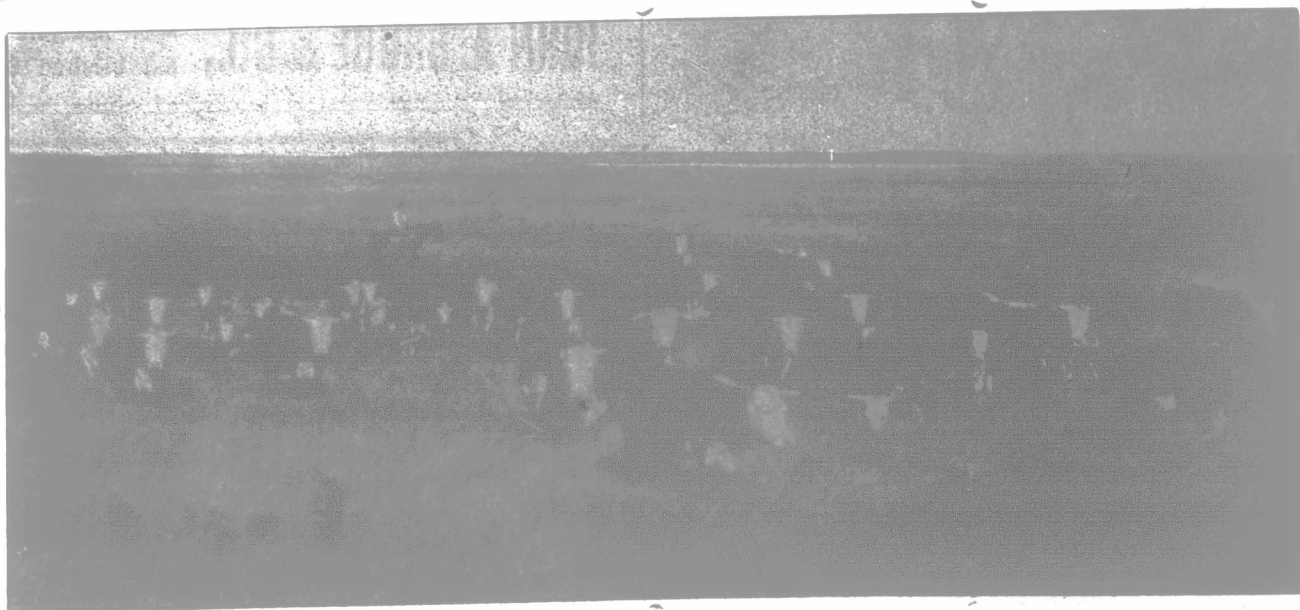
TORONTO, ONT., or to

W. C. WILCOX & CO., Our Western Agents, Box 818, Winnipeg, Man.

ADVERTISE IN THE ADVOCATE

**C. P. R. LANDS**

The Canadian Pacific Railway Company have 12,000,000 acres of choice farming lands for sale in Western Canada. Manitoba and Eastern Assiniboia lands generally from \$4 to \$10 per acre, according to quality and location. South-western Assiniboia and Southern Alberta lands, \$3.50 to \$8 per acre. Ranching lands generally \$3.50 to \$4 per acre. Northern Alberta and Saskatchewan lands generally \$6 to \$8 per acre.



Hereford Cattle, Crane Lake, Assiniboia, Main Line Canadian Pacific Railway.

**\$6 LANDS:**

160 acres, or one-quarter section, of \$6 lands may be bought for settlement with a cash payment of \$148.80, a payment of \$48.98 interest at end of the first year, and nine equal installments of \$120 each, which include interest at 6 per cent., annually thereafter. Purchasers who do not undertake to go into residence on the land within one year from date of purchase are required to pay one-sixth of the purchase money down, and the balance in five equal annual installments, with interest at the rate of six per cent. per annum.

**DISCOUNT FOR CASH:** If land is paid for in full at time of purchase a reduction in price will be allowed equal to 10 per cent. on the amount paid in excess of the usual cash installment of one-sixth. Interest of 6 per cent. will be charged on overdue installments.

FOR MAPS AND FULL PARTICULARS APPLY TO

**F. T. GRIFFIN,** Land Commissioner, WINNIPEG.

In answering any advertisement on this page, kindly mention the FARMER'S ADVOCATE.