

J. H. Grisdale  
Exp Farm Dec 15, 00

CANADIAN HORSE SHOW REPORT.

# THE FARMER'S ADVOCATE

AND HOME MAGAZINE

\*AGRICULTURE, STOCK, DAIRY, POULTRY, HORTICULTURE, VETERINARY, HOME CIRCLE.\*

REGISTERED IN ACCORDANCE WITH THE COPYRIGHT ACT OF 1875.

Vol. XXXV. LONDON, ONTARIO. MAY 1, 1900. WINNIPEG, MANITOBA. No. 501

## Land for Everybody.

Free Grants of Government Lands.  
Cheap Railway Lands for Sale on Easy Terms.

**GOOD SOIL. PURE WATER. AMPLE FUEL.**  
Take your choice in  
**Alberta, Assiniboia, Saskatchewan or Manitoba.**

Most desirable land can be obtained in the Beaver Hill District and along the line of the Manitoba and North-western Railway.

In the Prince Albert, Duck Lake and Rosetown Districts, on the line of the Qu'Appelle, Long Lake and Saskatchewan Railway.

In the Olds District, along the line of the Calgary and Edmonton Railway, about 50 miles north of Calgary.

In Southern Alberta, in close proximity to the Calgary and Edmonton Railway and the Crow's Nest Pass Railway, suitable for mixed farming and ranching on both a large and small scale.

For full information concerning these Districts, Maps, Pamphlets, etc., FREE, apply to

**Osler, Hammond & Nanton,**  
LAND OFFICE,  
381 Main St. WINNIPEG, MAN.



### FLEMING'S LUMP JAW CURE

## LUMP JAW

QUICKLY CURED.

A case of lump jaw in your herd means immediate loss; it may mean the infection of the rest of your herd; it may result in the distribution of the germs all over your pastures. All loss and danger can be positively averted by prompt use of

### Fleming's Lump Jaw Cure

The only radical cure known. Is endorsed by the most prominent ranchers and shippers of the continent. Easy to use. Is applied externally. One to three applications cure. Leaves jaw sound and smooth. Cannot harm in any way. One bottle usually cures two or three ordinary or one severe case. Price \$2.00. Sold by druggists. Can be sent anywhere by mail.

Money cheerfully refunded if the remedy ever fails.

FREE—Some important reports and an illustrated treatise on Lump Jaw. Write for them.

**FLEMING BROS., Chemists,**  
St. George, Ont.

**\$3 a Day Sure**

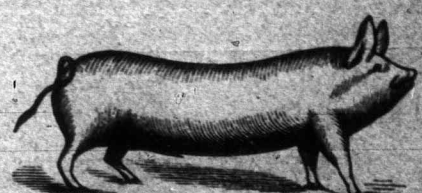
Send us your address and we will show you how to make \$3 a day absolutely sure; we furnish the work and teach you free; you work in the locality where you live. Send us your address and we will explain the business fully; remember we guarantee a clear profit of \$3 a day's work, absolutely sure, write at once.

**IMPERIAL SILVERWARE CO.,** Box 419, WINNIPEG, ONT.

PLEASE MENTION FARMER'S ADVOCATE.

### CONTENTS OF THIS NUMBER.

EDITORIAL.	PAGE.
STEALING CANADA'S GOOD NAME	255
SAN JOSE SCALE LEGISLATION	255
FOR A DOMINION EXHIBITION	256
"CANADA'S IDEAL"	256
THE RISING TIDE OF PRICES	256
THE WEATHER AND THE CROPS	256
STOCK.—CANADA'S BACON TRADE IMPERILED	256
BRITISH ARMY REMOUNTS FROM CANADA	256
ENQUIRIES ON LOOSE FEEDING FOR MR. HENNIE	257
COL. STONER ON LAND S.	257
BITING HARD-PULLING HORSES	257
LESSONS FROM THE LAMBING SEASON	257
MILK FROM TUBERCULOUS COWS	257
SHEEP AND LAMBS HIGH	258
BONE IN PIGS	258
DOMINION INCORPORATION FOR LIVE STOCK RECORD ASSOCIATION	258
LARGE OR SMALL PASTURES	258
SELECTING AND JUDGING DAIRY BULLS	258
TURNING STEERS OUT TO PASTURE	258
THE DOG LAW AGAIN	258
ENSILAGE SIX YEARS OLD	258
DALE 6681 (ILLUSTRATION)	259
FARM.—ROTATION OF CROPS	259
CULTIVATION OF SUGAR BEETS	259
FARM DREAM	260
PRIZES FOR SEED GRAIN COMPETITION	260
CORN PLANTING AND ITS EARLY CULTIVATION	260
CUTTING STRAW FROM THRESHER	260
MASONRY ARCH UNDER APPROACH TO BARN	260
THE HARBERRY SERUB MUST GO	261
HORSE SHOW.—THE CANADIAN HORSE SHOW	261
IMP. DUTCH LADY (2661) (9000) (ILLUSTRATION)	261
PRINCESS ALEXANDRA (2908) (ILLUSTRATION)	261
ROSSRAU ROYAL OAK (ILLUSTRATION)	262
CASSANDRA (ILLUSTRATION)	262
IMP. MARS (275) (ILLUSTRATION)	263
DAIRY.	
BUTTER FROM THE STABLE TO THE TABLE	262
THE AQUATIC CREAM SEPARATOR	262
CHEESEMAKING	263
THE BARCOCK TEST	263
GARDEN AND ORCHARD.—HINTS FOR INTENDING PLANTERS	263
THE GLADHOLDS	264
ORCHARD CULTURE (ILLUSTRATED)	264
THE FARM GARDEN; SCAB OF POTATOES; WHY NOT IMPROVE YOUR HOME GROUNDS THIS SPRING; TESTING THE BORDEAUX MIXTURE	265
ENTOMOLOGY.—ENTOMOLOGY TO THE AGRICULTURIST	265
SOME USEFUL BEETLES	266
APIARY.	
SWARMING OF BEES	266
POULTRY.	
HATCHING AND REARING CHICKENS NATURALLY	266
PLANTING FRUIT TREES IN THE POULTRY YARD	267
FEED AND CARE OF DUCKLINGS	267
A CURE FOR EGG EATING	267
QUESTIONS AND ANSWERS.	
VETERINARY.—BREEDING AN AGED MARE; COW WITH A COUGH; OBSTRUCTION IN THE PAROTID DUCT; LUXATION OF THE PATELLA; LAME HORSES AND OTHER THINGS; OEDEMA IN MARE; WASHY MARE; RETENTION OF PLACENTA; MALIGNANT GROWTH ON COW'S EYELID; CONTRACTED TENDON; ENLARGED LEG—WARBLES IN CATTLE; CAKED UDDER IN COW; SPRAIN OF THE BACK TENDONS; ENLARGED LEG	267-68
MISCELLANEOUS.—HAULING MANURE INTO LARGE PILES; REMEDY FOR OYSTER-SHELL BARK LOUSE—A WORD OF COMMENDATION; TRAINING A BULL'S HORNS; GEESE TO ONE GANDER; CURRING A WELL IN QUICKSAND; AS SHIRES AND CLYDES DIFFER; COWS CHEWING BONES—BLUESTONE FOR SMUT; SHEEP-DIPPING TANK; BULL SLOW IN SERVING; TRAINING A PUP—CARE OF DUCKS; SUGAR BEETS OR MANGELS; A SUBSTITUTE FOR GLASS IN HOTBEDS; TO PREVENT CROWS; PULLING UP CORN; COST OF CEMENT WALL—RATION FOR BULL; INSECTS ON HOP VINES—MANITOBA WASHER; PLAN OF CORN MARKER WANTED; SUGAR-CURING HAMS AND BACON; ROOT HOUSE; RECIPE FOR TANNING DEER SKINS; BUILDING SILO; EXPRESS RATE ON POULTRY; POLLED DURHAMS; SOFT EGGS—HENS LOSING HEAD FEATHERS; PERMANENT PASTURE ON LOW LAND; BARK LICE ON APPLE TREES	668-70
MARKETS.	
FARM GOSSIP.—SUITABLE SEED FOR P. E. ISLAND; PERTH COUNTY, ONT.; OXFORD COUNTY; P. E. ISLAND; MANITOULIN ISLAND; THE OUTLOOK FOR WHEAT AND CLOVER; LEGISLATION RE SALT PACKAGES; HURON COUNTY	270-71
CHATTY STOCK LETTER FROM CHICAGO	271
DOCK AND CASTRATE RAM LAMBS	271
TORONTO MARKETS	271
HORSE MARKET NOTES	271
HOME MAGAZINE.	
FAMILY CIRCLE	272
THE CHILDREN'S CORNER	273
"LOVE CONQUERS MIGHT" (ILLUSTRATION)	273
THE QUIET HOUR	274
A RECORD TOM'S DEPARTMENT; PUZZLES	275, 276, 277, 279
GOSSIP.	
A RECORD-BREAKING SALE OF HERFORDS	276
NOTICES.	275
ADVERTISEMENTS.	253 and 254, 275 to 284



This is the ideal bacon hog—100 to 200 lbs. live weight. Yorkshire and Berkshire crosses make the best bacon hogs. We buy every Monday and Friday morning, live hogs, delivered by farmers at the packing house, London Junction, and pay the highest price for choice quality.

**THE CANADIAN PACKING CO.,**  
LARD is the finest Lard in this country, guaranteed pure. Ask your grocer distinctly for it, and all other goods with same brand are guaranteed by us.

At our Store, next Post Office, you get all kinds of choice cured and fresh pork products, choicest Sausage and Bologna.

**THE CANADIAN PACKING CO.,**  
P. O. BOX 392, LONDON.

### Dollars Count!

INFERIOR SALT BEANS A LOSS IN DOLLARS WHEN USED IN BUTTER OR CHEESE.

## Windsor Salt

MAKES IT SWEET, KEEPS IT FRESH, BRINGS HIGHER PRICES. TRY IT.

**THE Windsor Salt Co. (LIMITED),**  
WINDSOR, ONT.

**Catalogue Printing our Specialty.**

Many of the best Catalogues in Canada are produced by us. Latest type faces, designs, ornaments, and modern machinery—best in America. Up-to-date covers designed by special artists without extra charge.

**London Printing & Litho. Company, Ltd.,**  
LONDON, ONTARIO.

**SHEEP BREEDERS' ASSOCIATIONS.**

American Shropshire Registry Association, the largest live stock organization in the world. Hon. John Dryden, President, Toronto, Canada. Address correspondence to MORTIMER LEVERING, Secretary, Lafayette, Indiana.

You can get Ros Rov mining shares. This is one of the best investments in the Lardeau (Kootenay, B. C.), and a little money wisely spent now may make a big increase in your bank account. This is a safe Company, with good properties, which are being carefully and economically worked. I recommend the shares as a good thing. Buy now. A. E. WELCH, London, Ont.

**AT MY OFFICE,**  
**207**  
DUNDAS STREET,

PLEASE MENTION FARMER'S ADVOCATE. PUBLISHED TWICE A MONTH, AT LONDON AND WINNIPEG, CAN. PLEASE MENTION FARMER'S ADVOCATE.