

# THE FARMER'S ADVOCATE

AND HOME MAGAZINE

PERSEVERE  
SUCCEED  
FOUNDED

Dairy and Cold Storage Com-  
missaries  
Dept. of Agriculture

AGRICULTURE, STOCK, DAIRY, POULTRY, HORTICULTURE, VETERINARY, HOME CIRCLE.

PRINTED IN ACCORDANCE WITH THE COPYRIGHT ACT OF 1917.  
LONDON, ONTARIO, MAY 13, 1920.

No. 1442

## Artistic Roofs for Beautiful Homes and Public Buildings

An added touch of beauty and a distinct "individuality" is given to the home roofed with Brantford Asphalt Slates.

The crushed slate surface of brownish red or dark green is not only beautiful to the eye; it is also fire-resistant.

Sparks from railroad engines or from chimneys, falling on

## Brantford Asphalt Slates

are harmless and die out immediately.

This roofing is used on railway stations, one of which is illustrated here.

What is safe for a railway station is doubly safe for a home, a school or a public building.

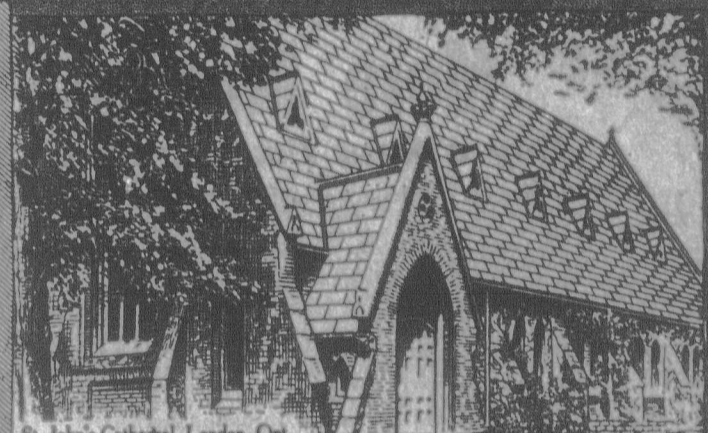
And Brantford Asphalt Slates are the durable, economical, satisfactory roof. They will not crack, curl, rot or blow off. Easily and quickly laid.

Two sizes: **STANDARD** Slates, 8 inches x 12 1/4 inches, Brantford Asphalt **SLAB** Slates, 32 inches x 12 inches, four standard slates joined together. This is the newest idea in roofing. It saves time, labor and nails in laying.

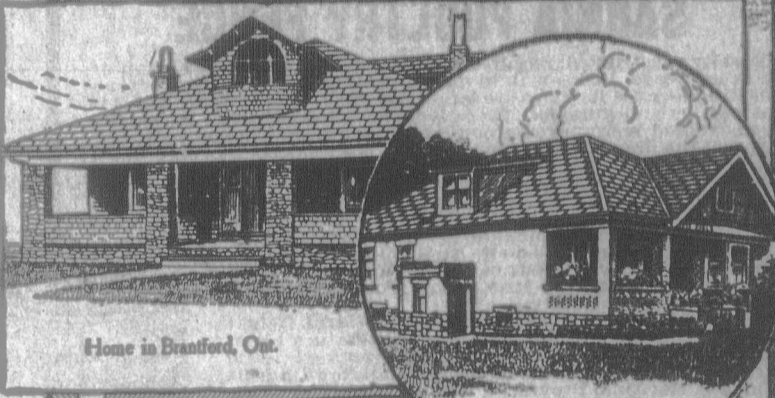
Write for our booklet "Permanent Roofing Satisfaction" and get complete information.

## Brantford Roofing Co., Limited

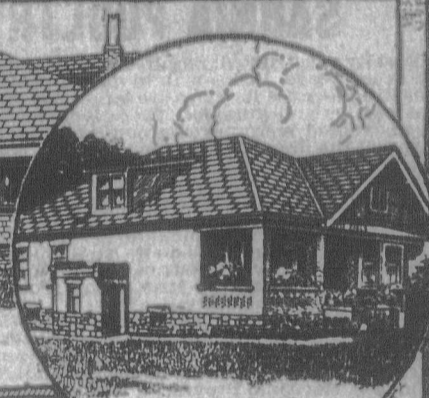
Head Office and Factory, Brantford, Canada.  
Branches at Toronto, Montreal, Halifax, Winnipeg.



St. John's Cathedral, London, Ont.



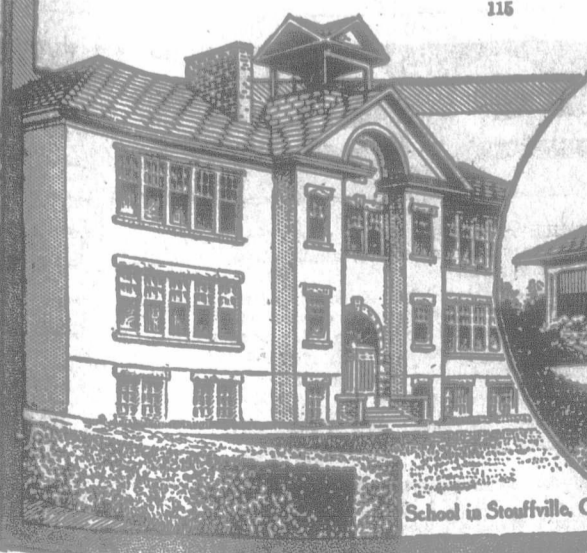
Home in Brantford, Ont.



Home in London, Ont.



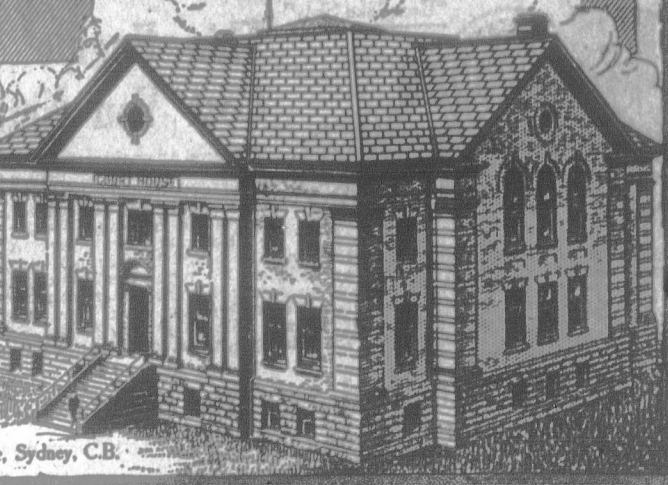
C.P.R. Station, North Bay, Ont.



School in Stouffville, Ont.



Home in Ottawa, Ont.



Court House, Sydney, C.B.