

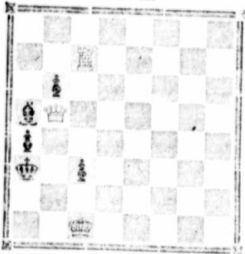
**CHESS COLUMN.**

All communications and contributions to be addressed to J. E. NAIRAWAY, P. O. Box 74.

**Problem No. 12.**

BY C. H. WHEELER.

**BLACK.**



White to play and mate in two moves.  
**CANADIAN CORRESPONDENCE TOURNEY**

Game recently played by correspondence between Mr. Joshua Clawson of St. John, N. B., and Mr. George P. Black, of Halifax, N. S.

**KING'S BISHOP'S GAMBIT.**

- |                   |                   |
|-------------------|-------------------|
| J. C.             | G. P. B.          |
| 1 P to K 4        | 1 P to K 4        |
| 2 P to KB 4       | 2 P takes P       |
| 3 B to B 4        | 3 Q to R 5 (ck)   |
| 4 K to B sq       | 4 P to KKt 4      |
| 5 Kt to QB 3      | 5 P to Kt 2       |
| 6 P to KKt 3 (a)  | 6 P takes P       |
| 7 Q to KB 3       | 7 P to KKt 7 (ck) |
| 8 K takes P       | 8 Q to KB 5 (b)   |
| 9 Kt to Q 5       | 9 Q takes Q (ck)  |
| 10 Kt takes Q     | 10 K to Q sq      |
| 11 KKt takes P    | 11 Kt to KR 3     |
| 12 R to KB sq     | 12 R to Kt sq     |
| 13 P to Q 3       | 13 P to QB 3      |
| 14 Kt to B 6      | 14 B takes Kt     |
| 15 R takes B      | 15 R to Kt 3      |
| 16 R takes R      | 16 B takes R      |
| 17 Kt takes R P   | 17 Kt to K 5      |
| 18 B to B 7       | 18 Kt to K 4      |
| 19 B to Kt 5 (ck) | 19 K to B 2       |
| 20 B to KB 4      | 20 P to Q 3       |
| 21 B takes Kt     | 21 P takes B      |
| 22 B takes P      |                   |

And Black resigned.

NOTES BY J. C.—(a) This move, 6 P to KKt 3 is the invention of the brilliant McDonnell and is the beginning of a merciless attack.

(b) 8 Kt to KR 3 is the right move here. The move actually made, looking to an exchange of Queens is more than met by the reply 9 Kt to Q 5.

When a dog has a tin can tied to his tail it must make him feel very can-cur-ous.

Spin-ach makes tip-top greens.

A man caught robbing a robin's nest on the Common spent the 17th inst. in a Police Station.—*Boston Post.*

A very dis-on-est act. We wouldn't spare 'ow man who would do that.

SELF-MADE.—One of a gentleman's daughters who had often heard her mother speak of her father as being a self-made man, asked her one day if her father was a self-made man why didn't he put mo.e hair on his head?

"Permit me," said a gentleman to a Custom House officer recently, as he tried to walk past him with a valise of smuggled goods. "Certainly, if you have a permit," replied the polite official.

**PUZZLES' KNOWS.**

Edited by ELLSWORTH, P. O. Box 3421, Boston, Mass.

Contributions and answers are cordially invited from all interested in whatever pleases the young, and also from every reader of the TORCH, and the Puzzle fraternity in general. All communications for this Department should be sent to its Editor at the above address.

**127.—CHARADE.**

My first is to hurt;  
My second is a metal;  
A y whole is a bird. SILV.

**128.—NUMERICAL ENIGMA.**

My 3, 4, 6, 5 means fool.  
My 1, 2, 12, 10 signifies to purpose.  
My 9, 7, 1, 11, 13, 4, 12 is a division of Asia.  
My 3, 12, 8, 13 means to mend.  
My whole will be found in Europe. GLEN LYON.

**129.—CROSS-WORD ENIGMA.**

My first is in cat, but not in dog;  
My second is in rat, but not in frog;  
My third is in roan, but not in home;  
My fourth is in tide, but not in loam;  
My fifth is in write, but not in read;  
My sixth is in smart, but not in speed;  
My seventh is in idle, but not in work;  
My eighth is in Greek, but not in Turk;  
My ninth is in house, but not in barn;  
My tenth is in cloth, but not in yarn;  
My whole is a prominent member of Dominion Parliament. ANDY.

**130.—HALF-WORD SQUARE.**  
Puzzles; a Latin number; an English number; a preposition; a consonant. EPHEV.

**131.—RIDDLE.**

If first a part of me you take  
I'm like the figure eight;  
My next a numeral will show  
Before it is to late;  
The last a figment cometh now.  
With color unlike slate. JEW SHARP.

**132.—DROP-LETTER DIAMOND.**

```

      * H *
     * T * I *
    * H * R * E *
   * I * R * E *
  *   * E *
 
```

ETHEE.

**133.—CENTRE METAGRAM.**

Change centre of a farmer, and I have so'emm.  
Change centre of an orgie, and have a traitor TORCH-EYE.

**134.—LOGORIPHI.**

Whole I am a river in Africa; transpose and I am to rule; delete and transpose, have a half laugh; changehead, and have a roted island; change final, and reverse, and have conflagration; behold, have anger; change head and transpose, and have a period of time. (Answers in two weeks.) JOSHUA.

**ANSWERS TO PUZZLES IN JUNE 8.**

106.—Rake, cake, Jake, hake, lake, wake, sake.

107.—Much Ado About Nothing.

108.—Name.

109.—Ephay.

110.—Antioch.

111.— A M E R I C A  
L G E R R R  
M R S S M  
A S S E R V E  
N N R S N  
A I V T I  
C A P E L L A

112.— F A B E R  
A L I V E  
B I S O N  
E V O K E  
R E N E W

113.—S-hell.

114.—Paris Exhibition.

115.— E  
O N E  
E N T E R  
E E L  
R

115.— T A L L O W  
L I T H I C  
P E L L O W  
A K M L E T  
S O O K E Y  
T U R B E Y

**OUR WORD HUNT.**

Knowing a Word Hunt will be very interesting to all our puzzlers, and a number of readers; we give the word suggested by Foster, from which as many other words might be taken as the patience and ingenuity of the hunters may devise. The words

**ARCHITECTURE.**

The hunt is subject to these conditions: No letters to be used often in a word than it occurs in the basis. Words of the English language only are allowed. All words must be named. The result will be announced in our issue of August 3rd; and to the sender of the highest list will be awarded a first class prize unnamed until its publication of the results of the hunt. All lists will be published.

**CHAT WITH KNOTTERS.**

GLEN LYON.—Read "partial directories" instead of "practical dictionaries" in our list.

ANDY, Portland.—Always glad to hear from you. Puzzles are very good. Please accept thanks. The prize is sent to your other address.

JEW SHARP, St. John.—We are glad you have turned your inside this way. May it so continue.

ETHEE, St. John.—We are always ready with a welcome for a new knitter. Your enclosures are very fair, and we invite their continuance.

LEWISINE, St. John.—Yours is a first rate batch of puzzles, all of which shall have an early appearance. Of course you will enter the Word Hunt.

SILV., St. John.—Our columns are much indebted to you for your excellent installment. We are pleased to know we have such a puzzling contributor.

"THE YOUNG BRUNSON."—We have received the first three numbers of the amateur paper and find it very good of the kind. It is published by Geo. E. Frye, Box 58, Halifax, N. S.; and favors Carvel Kendall, of Boston, as President of the N. A. P. A. "Intricate 1400s" makes a very good Puzzle Department, and the motto "multum in parvo" is expressive of its contents.

"THE CORNER."—Of Cuba, N. Y., is a small-sized paper and much better printed. Its reading-matter, mostly selected, is of the first order, and the editorials read well. Published by R. W. Burnett.

On the steps it's nice to listen, while he tells the story old; then the loved one's eyes will glisten, and she'll catch her death of cold.—*Knob's Constitution.* Then she trips up to her chamber, delfly delfs her raiment light, throws on her dainty dimity, and suffles all the night.—*N. Y. News.*

A dramatic item says that Kate Claxton is playing to poor houses in Brooklyn. Brooklyn must have pretty high-toned paupers.—*Goulds Enterprise.*

Does the editor of the St. John Torch sin till late? His paper scintillates.—*Dexter Smith's.*