

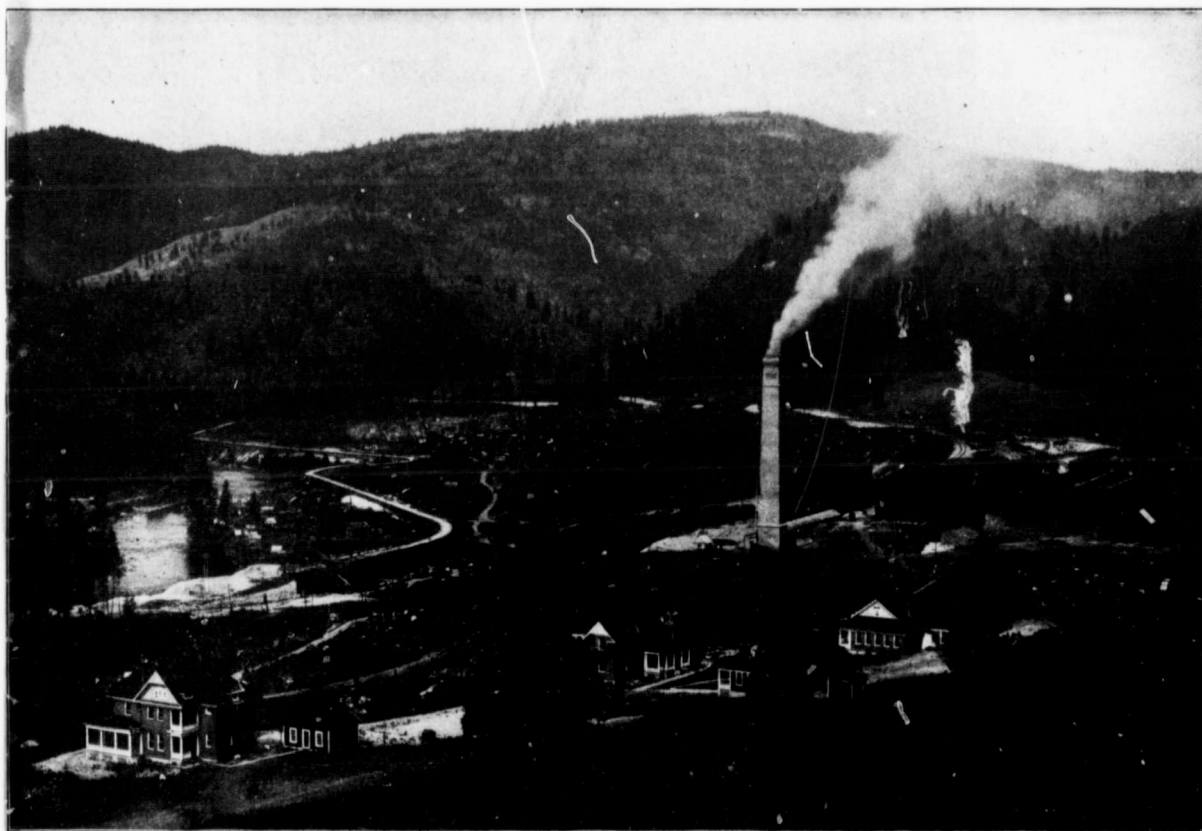
THE ADDITIONS TO THE GRANBY SMELTER.

A CORRESPONDENT to the MINING RECORD writes: Completion of the additions the Granby Mining, Smelting and Power Company is making to its smelting works at Grand Forks has been delayed by the strike of American steelworkers. Substantial progress has been made, though, with the erection of buildings and the putting in position of such of the new plant and machinery as has been received at the smelter.

The additions to the plant include two furnaces, two

ones, will be set 39 feet apart, centre to centre, and room is being left for two more, which the company has decided to add early next year, so as to increase the daily treatment capacity of the works to 1,800 or 1,900 tons.

The matte-converting plant will be placed in a building having a structural steel frame covered with corrugated iron. The frame of this building has been erected and two 10-ton converter stands will be put in as soon as received. Room is being provided for two more converters, whenever such enlargement shall be found necessary. Between the converters and the fur-



THE GRANBY SMELTER—GENERAL VIEW OF WORKS.

converters, one turbine wheel, electric generators and motors, hydraulic-power appliances, another sampling mill, complete, and numerous accessories to these several additions. For the housing of these, either existing buildings are being enlarged or new ones erected.

The furnaces that have been in operation at the works for the past year are double-decked, steel-jacketed furnaces, 44 in. x 260 in., with nine 6-in. tuyeres on each side, each furnace having a nominal daily treatment capacity of 250 tons. Their actual capacity, in consequence of the self-fluxing nature of the ores treated, has been found to be about 310 tons each 24 hours. The two new furnaces are to be similar in size and make to those now in operation. The new furnaces, like the old

naces two traveling cranes will be operated. A 10-ton crane will carry the matte ladles, some of which are of 5-ton and others of 8-ton capacity, from the furnaces to a tilting furnace holding 25 tons and which will serve as a reservoir for the molten matte. A 40-ton crane, besides handling the converter shells and other heavy plant, will convey the red-hot matte from the tilting furnace to the converters, where it will be submitted to a process that will result in a 98 per cent. copper product being turned out. Accessory to the converters are appliances for relining the shells, including a Dodge crusher and a pair of rolls for crushing quartz, and mud mill for mixing the clay and crushed quartz which composes the lining.