

DR. MACLAREN BURIED LATE KNOX PRINCIPAL

Impressive Service Calls Forth Tributes From Friends and Colleagues.

"They that are planted in the house of the Lord shall bring forth fruit in their old age" was wonderfully fulfilled in the life of Dr. MacLaren, said Rev. Prof. Ballantyne in an impressive address at the funeral service of the late principal emeritus of Knox College. The solemn service was held yesterday afternoon at Bloor Street Presbyterian Church. The public service at the church was preceded by a short private one at the family residence.

A large proportion of the members of the Toronto Presbyterian and of the congregation of Bloor-street church attended the public service. Bishop Reeves of the Toronto Anglican diocese was also present. The pulpit and platform were heavily draped with black crepe.

Rev. Dr. Wallace, pastor, officiated. The service opened with Dr. MacLaren's favorite hymn "Fight the Good Fight."

Rev. Prof. Kilpatrick, who succeeded the deceased as professor of systematic theology, read the funeral sermon.

Rev. Prof. Ballantyne, as senior professor of Knox College faculty, delivered an appreciation of the life and services of his former tutor and colleague. Prof. Ballantyne said that length of days was a scriptural blessing for which in Dr. MacLaren's case thousands had reason to feel thankful. Before he was 21 years of age, while he was one of the first students of Knox College, over 40 years ago, he put his hand to the plow and never turned his face backward.

Rev. Dr. Wallace said that for 21 years he had as pastor found Dr. MacLaren's life to be as pure and transparent as a mountain lake.

Rev. Dr. MacKay, secretary foreign mission committee, and Rev. Dr. Fletcher, Hamilton, ex-moderator of the general assembly, took part in the service.

The pallbearers were Wm. Davidson, John Wanless, Dr. Fotheringham, G. C. Ross, Matt Riddell, J. Harvey, Rev. Dr. Semmerville and Rev. Dr. Duncan.

The relatives present included Rev. David MacLaren, W. C. MacLaren, and Rev. A. Cameron, Brockville; A. A. MacLaren, London; Rev. P. McL. Forin, Belleville; Daniel and Charles MacLaren, Ottawa.

A magnificent wreath from Bloor St. Presbyterian Church was among the floral tributes. Two Toronto Chinese Christians, and friends from Buckingham were among those who sent similar tokens.

The interment took place at Mount Pleasant Cemetery.

BRITAIN'S PLACE IN CHINA

London Post Says United States Competition is to be Feared.

LONDON, Aug. 6.—The Morning Post this morning contends that in no other part of the world is there so fruitful a field for railway development as in China. It proceeds:

"It is not very encouraging to learn that materials for the new railway in Kwantung Province were supplied by the United States, Germany and Japan. This is one of the many signs that British commercial supremacy in China is not so assured as it was some years ago.

"British manufacturers and merchants in the far east will have to face a vigorous commercial campaign directed from the United States by President Taft. The resources of the Chinese market are perhaps hardly realized yet and they will grow apace as railway development advances.

"In a few years' time China will obtain a large number of engineers from the ranks of the hundreds of students now being trained abroad and in a new technical college in the empire itself, and if only the spread of education and enlightenment brings a higher standard of official integrity, one of the main sources of the weakness and backwardness of the Chinese race will be removed."

FOR NEEDY CONSUMPTIVES.

A cheque for \$350.00 has been received by the secretary-treasurer of the National Sanitarium Association from A. C. Hardy, Brockville, Ontario, towards maintenance of patients at Muskoka Free Hospital for Consumptives. This week Mrs. H. St. Germain of Bedford Park, North Toronto, called at the head office of the association and handed Mr. J. S. Robertson, secretary-treasurer, a cheque for \$200, bequest from the late Mr. St. Germain.

Sailors Cling to Rigging.

CAPTOWN, Aug. 6.—Five members of the crew of the British steamship Masri, which ran on the rocks Wednesday night off Slang Bay, are still on board that vessel.

Thru the clouds of spray dashed by the terrific seas breaking over the wreck, the forms of the men can be indistinctly seen clinging to the rigging. Their position is most perilous. Lifeboats are attempting to rescue them.

Dies on Violet to Daughter.

MONTREAL, Aug. 6.—George Denmark of Belleville died while on his way to visit his daughter, a nurse in the Royal Victoria Hospital. He collapsed in the street, and a student picked him up and took him to the hospital in a cab. But he died on the way, and the daughter, who was waiting to welcome him, identified the body as that of her father.

PRIVATE DISEASES

Impotency, sterility, Nervous Debility, etc. (the result of folly or excess). Gleet and Stricture treated by Galvanism (the only sure cure, and no bad after-effects).

DR. W. M. GRAHAM, No. 1 Clarence Square, Cor. Spadina.

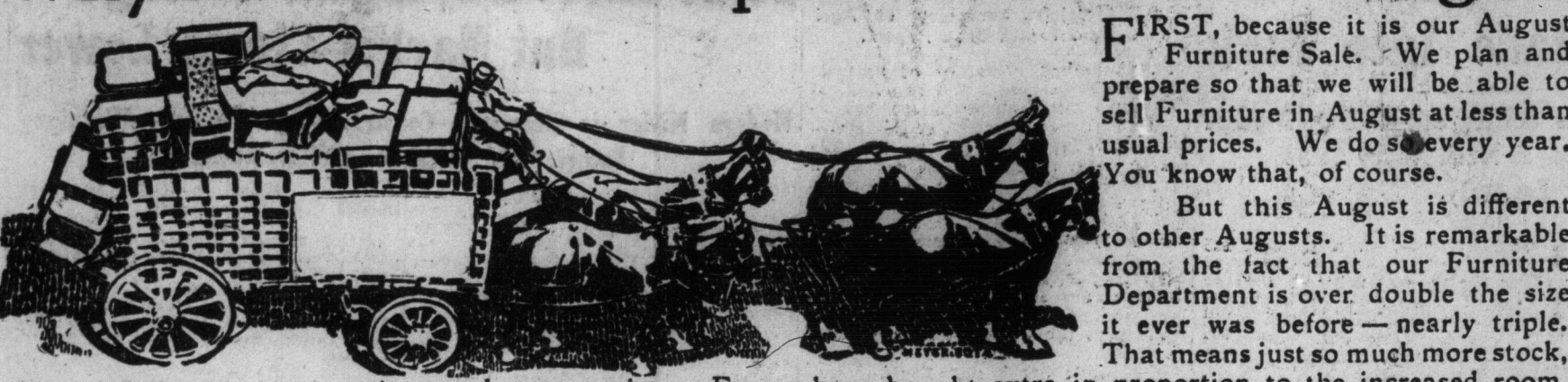
H. H. FUDGER, President
J. WOOD, Manager.

THE SIMPSON COMPANY, LIMITED

PROBABILITIES.
Slight winds, variable fine and very warm.

THE ROBERT SIMPSON COMPANY, LIMITED

Why Furniture is Cheap in this Store this August



FIRST, because it is our August Furniture Sale. We plan and prepare so that we will be able to sell Furniture in August at less than usual prices. We do so every year. You know that, of course.

But this August is different to other Augusts. It is remarkable from the fact that our Furniture Department is over double the size it ever was before—nearly triple. That means just so much more stock, so much more variety. For we have bought extra in proportion to the increased room.

You know, of course, how large buying influences prices, how much more economical it is for those stores than can do it. This August Sale shows you the result. We have bought in larger quantities than ever because we had the new room to place it in. Come and see. Monday we emphasize most particularly:

Serpentine Crepe 19c a Yard
(Wash Goods Department.)

We have been able to secure at a big discount 250 pieces of the celebrated "Serpentine" Crepe for kimono, etc., at a big discount of manufacturer's price. Special for Monday.

350 pieces 28-inch "Serpentine" Crepe, all good designs of flowers, spots, butterflies, etc., in pale blue, champagne, red, black and navy grounds; these make lovely kimono, dressing gowns and gowns; these are being sold regularly at 28c and 25c. Our special price 19c.

Chamber's Encyclopedia
Published at \$40.00. On sale at \$25.00, in the New Book Department, Monday, August 9.

No library is complete without an encyclopedia. No library is properly even commenced without one. Here's your chance.

5 sets only Chamber's Encyclopedia, bound in half leather; the latest edition. This set is advertised daily at \$40.00 per set. Our price \$25.00. Offer stands for day only. (On sale New Book Department.)

Wall Paper Clean-up
6,500 rolls Monday at Cut Prices.

Imported Papers, Regular to \$1.00, Monday 50c.

Imported Papers, Regular to 65c, Monday 33c.

Imported Papers, Regular to 35c, Monday 19c.

Domestic Papers, Regular to 25c, Monday 14c.

Domestic Papers, Regular to 15c, Monday 7c.

ROOM MOLDINGS.

Plaster Moulding, Regular 15c, Monday 11c.

Chair Rail, Regular 10c, Monday 7c.

Chair Rail, Regular 4 1/2c, Monday 3 1/2c.

Room Moulding, Regular 3c, Monday 2c.

Room Moulding, Regular 2 1/2c, Monday 1 1/2c.

For Wash Day

Fels Naptha Soap, per bar 5c.

Sunlight Soap, 8 bars 25c.

Comfort, Eclipse or Victor Soap, per bar 4c.

Surprise Soap, 6 bars 25c.

Heather Brand Soap, 8 bars 25c.

Simpson's Big Bar Laundry Soap, per bar 10c.

Pearline, 1-lb. package 11c.

Old Dutch Cleanser, regular 10c, 3 packages 25c.

Kitchen Sapolio, per cake 8c.

Powdered Ammonia, large package 5c, 3 packages 25c.

Naphtha Powder, 1-lb. package 5c.

Canada White Laundry Starch, 1-lb. package 7c.

Royal Blue, 2 packages 7c.

Dingman's Lye, per tin 7c.

Gold Dust Washing Powder, large package 22c.

Bon Ami Soap, per cake 12c.

Klenzine Powder, 3 packages 25c.

Taylor's Soap Powder, 2 packages 25c.

Telephone direct to department, Main 7841.

2 1/2 LBS. CELONA TEA, 50c.

A blend of India and Ceylon Teas, of uniform quality and flavor. 1,000 lbs., black or mixed, Monday 2 1/2 lbs. 50c.

Staples for Housekeepers on Monday

WHEN you think of refurnishing the linen cupboard think of Simpson's Linen Department. Household staples of all kinds are bought to advantage here. Monday is a good day to pick up such things to extra advantage.

(Second Floor, Yonge Street.)

900 yards Heavy Cantons, bleached or unbleached, good firm make, and well napped, standard widths, perfectly pure. Per yard, Monday, 7 1/2c.

80 dozen only Bleached Satin Damask Table Napkins, every thread pure linen, some hemmed ready for use, splendid range of suitable bordered designs, 22 x 22 in. Per dozen Monday \$1.69.

1,100 yards Heavy All Linen Scotch Crash Roller Toweling, no better made to dry and wear, red border, made from long fibre flax, 17 inches wide. Per yard Monday 8c.

(Main Floor.)

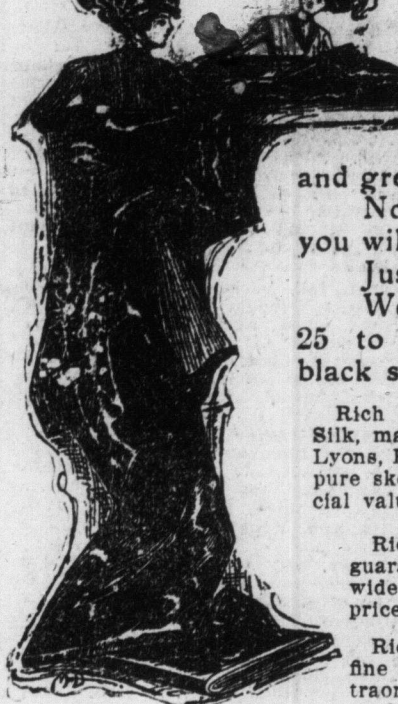
60 pairs White Unshrinkable Wool Blankets, dainty pink or blue borders, thoroughly cleaned and finely napped, a great blanket to stand the wash, 60 x 80 inches. Per pair Monday \$2.22.

Hemmed Sheets, 200 pairs, plain or twilled, made from selected English sheetings, absolutely pure and full bleached, splendid hems, 2 x 2 1/2 yards, torn sizes. Per pair Monday \$1.28.

"Nearthlin" cleaning; one of the most popular fabrics of the season for white dresses, skirts, blouses, etc., looks like linen, wears like linen, washes like linen, 38 inches wide. Clearing, per yard, at Cotton Counter, Monday, 12c.

American Sign Writers' Cotton, any quantity, now in stock, Cotton Counter.

The August Demonstration of Simpson-Black Silks



BLACK, one would naturally be excused for thinking, is black. If it is anything else it is not black.

To disprove that statement get together side by side two or three samples of black silks as sold at the average store. You will notice plenty of shades of green and blue and grey, but the pure unmistakable black black will not appear. Now just compare a piece of Simpson's guaranteed black. There you will see black that is black—and a black that will stay black, too.

Just come to the Silk Department Monday and let us show you. We offer on Monday exceptional values, superior qualities, at 25 to 35% less than the regular price asked for these high class black silks.

Rich Black Mousseline Duchesse Dress Silk, manufactured by C. J. Bonnet et Cie, Lyons, France. This superb dress quality is pure skein dyed, 38 inches wide, extra special value. August sale price \$14.44 yard.

Rich Black Chiffon Taffeta Dress Silk, guaranteed C. J. Bonnet's make. 1 yard wide, unmatched value. August sale price \$11.15 yard.

Rich Black Satin Paillette Dress Silk, fine heavy make, handsome jet black, extraordinary value. August sale price 98c yard.

One yard wide Mousseline Taffeta Dress Silk, a pure unadorned quality, unquestioned value. August sale price \$10.00 yard.

Rich Black Peau de Soie Dress Silk, handsome dress qualities, which we recommend to you to give entire satisfaction. The best value ever offered in this fashionable weave. August sale price 66c yard.

One yard wide, Lyons Superior Dye and Finish Habutail Silk, fine, close, extra heavy quality. Sold at 65c yard. August sale price 46c.

French Motor Veils
48c

400 Sample Motor Veils, a little lot we cleaned up from a French Importer, at our own price. Colors Black, brown, navy, green and white. Regular 75c each, for 48c.

LACES.

16,000 yards of Val Laces on sale Monday at 50c yard.

37 piece dinner sets of highest grade English Semi-porcelain, handsome floral decoration in neutral tones, embossed scalloped edges, sold \$9.50

Bread and Butter Plates, decorated with large pink roses, regular \$1.00, Monday .75

Fruit Sets, white and gold decoration, 1 large bowl and 6 napkins, .29

White Q. globes, reg. 15c, Monday .25

2 for \$1.25

Genuine Lindsay Inverted Lights, complete with etched or colored globes .98

and marble, reg. \$1.25, Monday .75

9.89

Square Brush Brass Gas or Electric Domes, 14 in. spread, ruby, green or amber glass, with beads to match, regular \$1.50, Monday .85

Square Hall Lanterns, 9-in. diameter, green or amber glass, with beads to match, black, regular \$1.50, Monday .85

35.99; brush brass, regular \$2.49, Monday .99

only. Bent Glass Electric Domes, 20 inch diameter, green and amber glass, regular \$2.50, Monday 1.75

Gas Brackets, rope pattern, complete; Swift Bracket, regular 25c, Monday 20

Single Swing, regular 40c, Monday 30

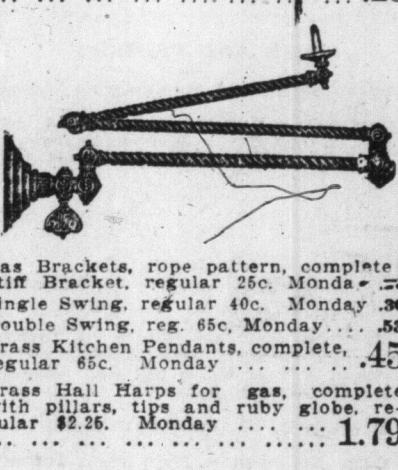
Double Swing, reg. 50c, Monday, 45

regular 65c, Monday, 45

Brass Kitchen Pendents, complete, 45

regular 65c, Monday, 45

Brass Hall Harps for gas, complete with pillars, tips and ruby globe, regular \$2.25, Monday 1.75



Clearing Girls' Summer Dresses

LETTING them go at next-to-nothing prices to make room for new early fall styles that are now arriving. Three more months in which to wear them. Come early Monday.

Girls' Dresses, for ages 6 to 10 years, fine print, in blue or pink colors, pretty styles for present wear. Colors Black, brown, navy and 98c each. Monday all at 50c each.

Girls' Dresses, for ages 6 to 10 years, two pretty styles, high neck and Dutch neck, navy blue print, with small white dot, trimmed with white folds, perfect fitting and extra wide skirts. Regularly \$1.25 and \$1.50 each. Monday all at 65c.

MONDAY BASEMENT SALE

Genuine Lindsay Mantles, regular .75, Monday .50

Genuine Gallery upright light, complete with white globe, regular .95, Monday .65

White Q. globes, reg. 15c, Monday .25

2 for \$1.25

Genuine Lindsay Inverted Lights, complete with etched or colored globes .98

and marble, reg. \$1.25, Monday .75

9.89

Square Brush Brass Gas or Electric Domes, 14 in. spread, ruby, green or amber glass, with beads to match, regular \$1.50, Monday .85

Square Hall Lanterns, 9-in. diameter, green or amber glass, with beads to match, black, regular \$1.50, Monday .85

35.99; brush brass, regular \$2.49, Monday .99

only. Bent Glass Electric Domes, 20 inch diameter, green and amber glass, regular \$2.50, Monday 1.75

Gas Brackets, rope pattern, complete; Swift Bracket, regular 25c, Monday 20

Single Swing, regular 40c, Monday 30

Double Swing, reg. 50c, Monday, 45

regular 65c, Monday, 45

Brass Kitchen Pendents, complete, 45

regular 65c, Monday, 45

Brass Hall Harps for gas, complete with pillars, tips and ruby globe, regular \$2.25, Monday 1.75

THE ROBERT SIMPSON COMPANY, LIMITED

SATURDAY, AUG. 7.

Boys' \$4.50, \$5.25, \$6, \$6.50 and \$7 Blouse Suits for \$2.98

HOLIDAYS won't last for ever. Here's a lot of pretty suits for boys of from 4 to 8 years, which will come in nicely when the out-door "roughing it" of summer holiday time is over. Come and get one on Monday—the price is remarkable.

Russian and sailor blouse styles, 217 in the lot altogether.

We want to clear them out. They should have been sold before stock-taking by rights of it.

English and Scotch tweeds and worsteds. Sailor collars trimmed with fancy silk braid silk emblems and flowing end tie.

Plain trousers or bloomers, sizes 4 to 8 years, Monday, \$2.98.

Boys' Underwear, Bathing Suits, etc.

1,000 garments Boys' Balbriggan Underwear, cream shade, shirts or drawers, 22 to 32. Regular 25c and 35c garment. Monday 19c garment.

800 Boys' One-piece Bathing Suits, in plain navy and fancy striped, 22 to 32. Regular to 35c. Monday 23c.

500 Boys' Fancy Neglige Shirts, small attached cuffs, spots, stripes, etc., 12 to 14. Regular 50c. Monday 35c.

300 Boys' English Cashmere Jerseys, in plain black only, 22 to 32. Regular \$1.00 and \$1.25. Monday 75c.

50 only Boys' Pyjama Suits, of splendid wearing Madras cloths, in blues or tans, trimmed with frogs; for boys up to 18 years. Regular \$1.50. Monday \$1.19 suit.

New Styles Coming In

We are never satisfied with success. We are always trying to improve. The Victor Shoe for men is to be a better boot this coming season than it ever was. Some of the new styles are already in. We mention two comfort specialists:—

The "Victor" Bunion Boot, made of finest vic kid leather, single Goodyear welted sole, low heel, made to fit the foot and not show that bunion, pronounced as characteristic of ordinary shoes, extra wide width, all sizes and half sizes, \$4.50.

The "Victor" Cushion Sole Boot. This five dollar boot is made over a conservative last, with a round toe; the cushion consists of a layer of specially prepared live lamb's wool, covered with moisture proof kid, which conforms to every curve of the foot; made of finest vic kid leather, with oak soles and heels; all sizes, \$5.00.

Sale of High Class Black Dress Goods and Suitings Monday 83c

Silk and Wool and All-wool San Toys, Silk Embroidered and Shadow Stripe French Voiles, Fancy Openwork Voiles, French Chiffon Panamas, and All-wool Armures, Fancy Worked, etc. All new and fashionable weaves. Some weights suitable for tailored suits; others for the smart, dressy house and street wear dresses. Every yard is our guaranteed quality. Colors are rich, full, unfading blacks. 42 to 50 inches wide. Monday, per yard, 83c.

50c BLACK FARMER'S SATIN, 38c.

Bust Form and Corset combined, 125 only to sell. Sahlin model. Fine white satin; a perfect figure builder; no hooks, no clasps, no eyelets, no strings, no heavy steels. Sold by actual measurement. Sizes, waist 20 to 26 inches, bust 32 to 38 inches. Monday, each \$1.00.

Corset Covers, fitted style, fine

Charming Whitewear at End-of-Season Prices

BIG savings on every garment in this list provided you come before they are all sold. That means early—8 a. m.

Night Dresses, a dainty slip-over style, in soft nainsook, lace beading on neck and cuffs, run with silk ribbon draw. Monday, each, 69c.

Night Dresses, of fine nainsook, square slip-over neck, 3/4 sleeves, neck and cuffs finished with fine embroidery, heading and narrow lace, with silk ribbon draws, large ribbon bow, a charming style. Regularly \$1.50 each. Monday, each, \$1.00.

Corset Covers, fitted style, fine

strong nainsook, trimmed with fine embroidery insertion and ruffles, heading and silk ribbon. Sizes 32 to 44 bust. Regular price 75c to 90c each. Monday, each, 50c.

Bust Form and Corset combined, 125 only to sell. Sahlin model. Fine white satin; a perfect figure builder; no hooks, no clasps, no eyelets, no strings, no heavy steels. Sold by actual measurement. Sizes, waist 20 to 26 inches, bust 32 to 38 inches. Monday, each \$1.00.

Palmer's Closely Woven Hammocks

Palmer's Closely Woven Hammocks, full size, valance and head spread, good colors, regular \$1.50, Monday 1.05

Nickel-plated Tea Kettles, sizes 5 and 8, regular up to \$1.40, Monday, 1.09

Square Gas Toaster, toasts 4 slices of bread at same time, good quality, Monday .25

Nickel-plated Trays, 12 inch and 13 inch, Monday .10

Bicycle Clothes, Wingera, good material, made for three years, 10 in. collar, 20 in. length, Monday, 4.30

Strong Galvanized Wash Tubs, No. 1, 20 gal. No. 2, 30 gal. No. 3, 40 gal. No. 4, 50 gal. No. 5, 60 gal. No. 6, 70 gal. No. 7, 80 gal. No. 8, 90 gal. No. 9, 100 gal. Monday, each .16