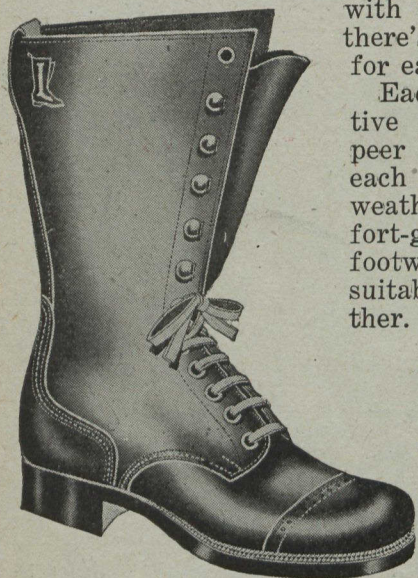


# Leckie Boots

The "out-o'-door" man—the man who has to do with the woods—or the farm—or the mines—the man who hunts, or prospects—the business or professional man who has most to do with the city streets—there's a Leckie Boot for each.



Each, in its respective field, has not a peer in the world—each a wear-resisting, weather-defying, comfort-giving article of footwear particularly suitable for B. C. weather.



AT YOUR SHOE DEALERS OR GENERAL STORES.

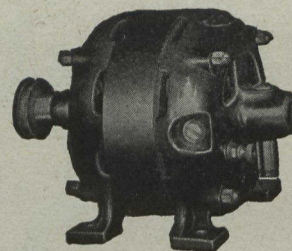
"The quality goes IN before the name goes ON—that's a Leckie."

## TABLE OF CONTENTS FOR DECEMBER

	Page
The Kelly Farm in Surrey, B. C. . . . .	1089-1093
By S. P. JACKSON.	
Okanagan Leads in Fruit Production . . . . .	1095
Would Rather Work Out Than Rust Out —Wealthy Interior Rancher Tackles Big Job in His Old Age . . . . .	1096-1097
Editorial . . . . .	1098-1099
Letters to the Editor . . . . .	1100
A Believer in Small Holdings—Member for South Vancouver in New Legislature Makes Suggestions . . . . .	1101-1102
The Happy Farmers of the Pacific Province . . . . .	1103
By RUSTICUS.	
Finishing Lambs for the Flock . . . . .	1105-1106
Vancouver Island Farmers Organize . . . . .	1108-1109
Beekeeping . . . . .	1110-1111
By WILLIAMS HUGH.	
Gardening for the Home . . . . .	1112-1113
By H. M. EDDIE, F.R.H.S.	
Poultry Section . . . . .	1115-1117
By MICHAEL K. BOYER.	
Results of Lack of Efficiency in Handling Produce . . . . .	1118
Women's Section . . . . .	1124-1126

# The March of Progress

Electric Light  
Electric Railways  
Electric Power on the Farm

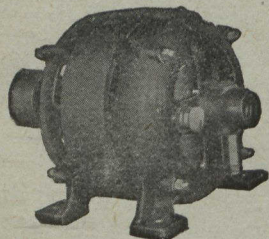


What electricity is doing to bring comfort, convenience and prosperity to millions of others, it will do for the farmer.

Electricity is a labor saver; it makes a man's time more valuable. It is cheaper; it is more reliable. It works 24 hours a day without rest. It is always ready.

Dozens of farmers within reach of B. C. Electric power lines in the Fraser Valley and Saanich Valley have adopted the modern method of electric motor operation. It has proved successful for them.

A note to any of our agents and you will be told how you may do your feed chopping, grain crushing, milking, wood cutting, water pumping, etc., more economically by means of electric power.



*B.C. Electric*

Vancouver.  
Chilliwack.  
North Vancouver.

Victoria.  
Port Moody.  
and other places.

New Westminster.  
Abbotsford.  
Eburne.