

Stuart's Patent Granolithic FOR SIDEWALKS, FLOORS, STEPS, LANDINGS, CORRIDORS, AREAS AND STABLES.

No building perfect without Granolithic Footpaths.

It has stood the test of years and climates.

IMPERIAL STONEWARE LAUNDRY TUBS

Are without parallel the finest and most complete Tubs in the market. Guaranteed perfect. Building Granite, Granite Paving Blocks, Polished Granite of every kind, Monumental Work. Marble for Interiors, Plumbers, Furniture, Cemetery, or any purpose, and of all kinds of Marble in the market.

SEND FOR ESTIMATES.

ROBERT FORSYTH,

MONTREAL: 10 Bleury Street.

TORONTO: 14 Toronto Arcade.

Plaster Your Building With
ACME CEMENT PLASTER

"NATURE'S PERFECT PLASTERING MATERIAL."

Is not an artificial compound, but perfect in its natural state, requiring only calcining to prepare it for use. No acids, chemicals, hair, fibre or ingredients of any kind used in its manufacture; requires only the addition of sand in its application to the wall. More simple in application, uniform, reliable, durable, stronger, cheaper and requires less labor than any plastering material ever produced. Most perfect, fire-proof plastering material on the market. 30,000 tons used in the United States in 1891 (1 ton Acme will cover same surface as 3 tons of the patent materials that are furnished to the trade mixed with sand.) Nearly 2,000 tons used on the World's Fair buildings at Chicago.

Does not require skilled labor. A house plastered with this material can be occupied 4 to 6 weeks sooner than if plastered with Lime Mortar. Owing to its density it makes a house warmer in winter and cooler in summer. But little more expensive than common lime mortar.

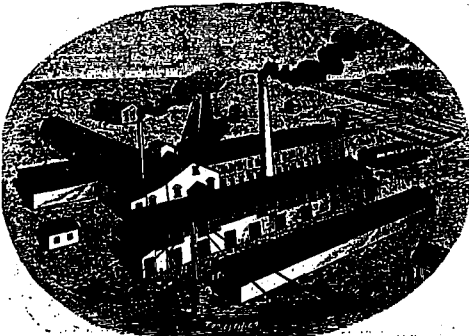
Send for samples, &c., prices delivered at any point, and further information to

B. L. NOWELL & CO., AGENTS

12 & 14 NAZARETH STREET, MONTREAL.

CANADIAN PHOTO-ENGRAVING BUREAU

Toronto



ESTABLISHED 1870.
Beamsville Pressed Brick Co.,

MANUFACTURERS OF

Fine Pressed
Plain
Ornamental
Rock face

BRICK
Farm Drain Tile,
Roofing Tile, etc.

Red
Brown
Buff
AND
other shades.

Our goods cannot be excelled in quality. No lime or impurities an often found in clay.

DAILY OUTPUT, 50,000 BRICKS.

Office and Works:
BEAMSVILLE, ONT.
Telephone communication.

SALES AGENT:
F. G. HOPKINS,
145 St. James St., MONTREAL.